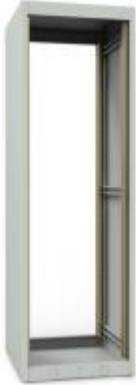




Quality Products. Service Excellence.

Test & Measurement Rack Cabinet *REFK Series*

1,000 lbs (454 kg) Weight Capacity

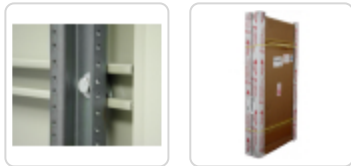


Features

- C-channel struts provide cabinet strength, ease and flexibility to adjust mounting rails.
- Solid non-removable side panels.
- Optional flush-mounted doors with quarter-turn locks can be mounted to swing on either side.
- Knockdown design ships unassembled for easy handling reduced freight cost and shipping protection.
- Simple assembly using one bolt in each corner to lock the sides to the top and bottom.

Specifications

- Cabinet frame constructed in 12-gauge steel.
- Drilled and 10-32 tapped flange 19" mounting rails are constructed in 10-gauge steel, include rack unit indicators, and are Zinc-plated to provide superior surface areas for equipment grounding.
- Includes four (4) levelling feet.
- Removable gland plate - over 10" (254 mm) long x 1.5" (38 mm) high opening - with knockouts on the rear bottom of the rack for easy cable access.
- 1,000 lbs (454 kg) **load rating**.
- Finished in textured RAL 9005 black or RAL 7035 light gray powder paint.
- TAA-compliant for GSA Schedule purchases.
- RoHS Compliant.
- Manufactured in North America within an ISO 9001:2015 certified facility.



Note: We recently discontinued some sizes from this series. Discontinued sizes are available while quantities last. Please consider our **RCK** or **C2** series as an alternative. For assistance finding a solution, **please connect with our product solutions.**

Accessories

- Rack Shelves
- PDUs and Outlet Strips
- Horizontal Lacing Strip
- Cable Management Arm
- Grounding & Bonding
- Square Hole Punched Mounting Rail
- Rack Equipment Installation Tool
- 10-32 Mounting Hardware
- Adjustable Depth Front-To-Rear Cable Manager
- Horizontal Steel Finger Cable Manager
- Rack Panels
- Mounting Rack Rails
- Rack and Cabinet Caster Set

REFK Active Sizes

Part No. RAL 9005 Black	Part No. RAL 7035 Light Gray	Overall Dimensions			Rack Units	Usable Mounting Dimensions		
		Height	Width	Depth		Height	Depth	Depth (With Doors)
REFK1903524BK1	REFK1903524LG1	40.19	21.34	24.50	20U	35.19	23.50	23.00
REFK1904224BK1	REFK1904224LG1	47.19	21.34	24.50	24U	42.19	23.50	23.00
REFK1905624BK1	REFK1905624LG1	61.19	21.34	24.50	32U	56.19	23.50	23.00
REFK1906324BK1	REFK1906324LG1	68.19	21.34	24.50	36U	63.19	23.50	23.00
REFK1907024BK1	REFK1907024LG1	75.19	21.34	24.50	40U	70.19	23.50	23.00
REFK1903531BK1	REFK1903531LG1	40.19	21.34	31.50	20U	35.19	23.50	23.00
REFK1904231BK1	REFK1904231LG1	47.19	21.34	31.50	24U	42.19	23.50	23.00
REFK1905631BK1	REFK1905631LG1	61.19	21.34	31.50	32U	56.19	23.50	23.00
REFK1906331BK1	REFK1906331LG1	68.19	21.34	31.50	36U	63.19	23.50	23.00
REFK1907031BK1	REFK1907031LG1	75.19	21.34	31.50	40U	70.19	23.50	23.00

REFK Clearance

Part No. RAL 9005 Black	Part No. RAL 7035 Light Gray	Part No. Beige	Overall Dimensions			Rack Units	Usable Mounting Dimensions		
			Height	Width	Depth		Height	Depth	Depth (With Doors)
REFK1903517BK1	REFK1903517LG1	-	40.19	21.34	17.50	20U	35.19	16.50	16.00
REFK1904917BK1	-	-	54.19	21.34	17.50	28U	49.19	16.50	16.00
REFK1907717BK1	-	-	82.19	21.34	17.50	44U	77.19	16.50	16.00
-	-	REFK1903531CG1	40.19	21.34	31.50	20U	35.19	16.50	16.00

REFK Locking Doors

Solid Door Part No. Black	Solid Door Part No. RAL 7035 Light Gray	Louvered Door Part No. Black	Louvered Door Part No. RAL 7035 Light Gray	Window Door Part No. Black	Use With REFK Frame		
				Height	Rack Units	Part No.	
RSDf19035BK1	RSDf19035LG1	RSDl19035BK1	RSDl19035LG1	REDFP19035BK1	35.00	20U	REFK19035XX
RSDf19042BK1	RSDf19042LG1	RSDl19042BK1	RSDl19042LG1	REDFP19042BK1	42.00	24U	REFK19042XX
RSDf19049BK1	RSDf19049LG1	RSDl19049BK1	RSDl19049LG1	REDFP19049BK1	49.00	28U	REFK19049XX
RSDf19056BK1	RSDf19056LG1	RSDl19056BK1	RSDl19056LG1	REDFP19056BK1	56.00	32U	REFK19056XX
RSDf19063BK1	RSDf19063LG1	RSDl19063BK1	RSDl19063LG1	REDFP19063BK1	63.00	36U	REFK19063XX
RSDf19070BK1	RSDf19070LG1	RSDl19070BK1	RSDl19070LG1	REDFP19070BK1	70.00	40U	REFK19070XX
-	-	RSDl19077BK1	RSDl19077LG1	-	77.00	44U	REFK19077XX

Tags: knock-down, knock down

Data subject to change without notice

© 2023. Hammond Manufacturing Ltd. All rights reserved.