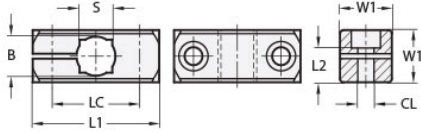




MT16-CC1W-M6-AN

Ruland One-Way Connector Clamp, Thru Hole 16mm, L 45mm, Black Anodized Aluminum



Description

Ruland MT16-CC1W-M6-AN is a one-way base connector with a 45mm base diameter, 16mm round thru holes, and M6 clamp screw. It is designed to fit with Ruland tubes that begin with M6. MT16-CC1W-M6-AN is aluminum with a black anodized finish and screws are 304 stainless steel for added corrosion resistance when compared to unplated types. This one-way base connector is typically used as a base in support structures for mounting sensors, screens, reflectors, plexiglass machine guards, and other industrial components. It can be permanently installed on extruded aluminum frames, sheet metal, and other surfaces using M6 hardware or the user can opt for portability by using MAGNET-57-32 magnetic base. MT16-CC1W-M6-AN is a cost effective option when compared to two-way bases for users that only require a tube in one orientation. MT15:16:20-ALK-M6-25 adjustable clamping handles can be used in place of standard hardware if rapid fine repositioning of the tube is required. MT16-CC1W-M6-AN is manufactured by Otto Ganter, inventoried by Ruland, and RoHS3 compliant.

Product Specifications

Thru Hole Diameter B	16 mm	Thru Hole Tolerance	+0.11/-0 mm
Center To Center LC	32 mm	Width & Height W1	20 mm
Overall Length L1	45 mm	Mounting Screw SC	M6
Clamp Screw CL	M6	Screw Length L2	14 mm
Weight (lbs)	0.068400	Material Specification	Anodized Aluminum
Manufacturer	JW Winco/ Otto Ganter	UPC	634529231326
Country of Origin	Germany	Tariff Code	7609.00.0000
UNSPC	31162908		