

# LTM4650A-1 Dual 25A or Single 50A $\mu$ Module Regulator

## DESCRIPTION

Demonstration circuit 2268A-I is a high efficiency, high density, dual 8A, switch mode step-down power supply on a compact 1.5'  $\times$  1.2' PCB. It features the LTM<sup>®</sup>4650A-1  $\mu$ Module<sup>®</sup> regulator. The input voltage is from 4.5V to 16V. The output voltage is programmable from 0.6V to 5.3V. DC2268A-I can deliver up to 25A maximum in each channel. As explained in the data sheet, output current derating is necessary for certain  $V_{IN}$ ,  $V_{OUT}$ , and thermal conditions. The board operates in continuous conduction mode in heavy load conditions. For high efficiency at low load currents, the resistor jumper (R1/R2) selects pulse-skipping mode for noise sensitive applications or Burst-Mode<sup>®</sup> in less noise sensitive applications. Two outputs can be connected in parallel for a single 50A output solution with optional jumper resistors. The board allows the user to program how its output ramps up and down

through the TRACK/SS pin. Remote output voltage sensing is available for improved output voltage regulation at the load point. An optional input inductor L1 reduces the EMI noise for noise sensitive applications. DC2268A can be easily inserted to an edge connector for testing and debugging. These features and the availability of the LTM4650A-1 in a compact 16mm  $\times$  16mm  $\times$  4.41mm LGA package make it ideal for use in many high-density point-of-load regulation applications. The LTM4650A-1 data sheet must be read in conjunction with this demo manual for working on or modifying the DC2268A-I.

**Design files for this circuit board are available at <http://www.linear.com/demo/DC2268A-I>**

LT, LT, LTC, LTM, Linear Technology, the Linear logo,  $\mu$ Module and Burst Mode are registered trademarks of Analog Devices, Inc. All other trademarks are the property of their respective owners.

## BOARD PHOTO

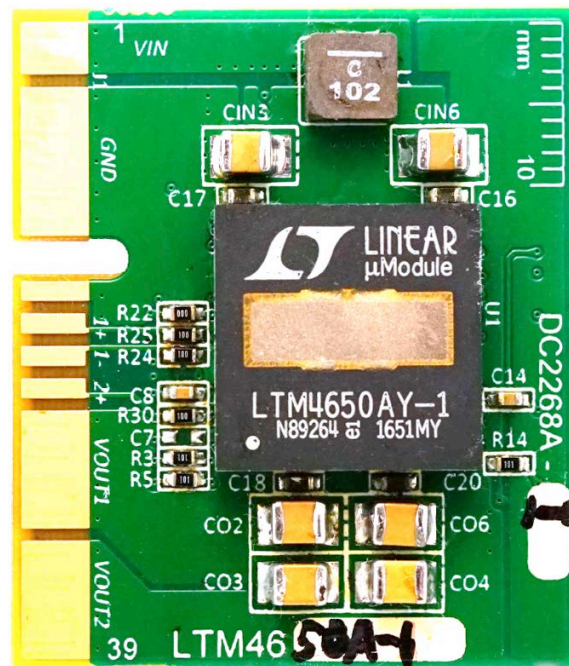


Figure 1. LTM4650A-1/DC2268A-I Demo Board

# DEMO MANUAL DC2268A-I

## PERFORMANCE SUMMARY Specifications are at T<sub>A</sub> = 25°C

**Table 1.**

PARAMETER	CONDITIONS	VALUE
Input Voltage Range		4.5V ~ 16V
Output Voltage V <sub>OUT1</sub>	V <sub>IN</sub> = 4.5~16V, I <sub>OUT1</sub> = 0A ~25A	3.3V ± 1.5%
Output Voltage V <sub>OUT2</sub>	V <sub>IN</sub> = 4.5~16V, I <sub>OUT2</sub> = 0A ~25A	1.5V ± 1.5%
Per-Channel Maximum Continuous Output Current	De-rating is necessary for certain V <sub>IN</sub> , V <sub>OUT</sub> and thermal conditions	25A (per channel)
Default Operating Frequency		600kHz
External Clock Sync. Frequency Range		400kHz to 780kHz
Efficiency of Channel 1	V <sub>IN</sub> = 12V, V <sub>OUT1</sub> = 3.3V, I <sub>OUT1</sub> = 25A, f <sub>SW</sub> = 600kHz	94.4%, see Figure 3
Efficiency of Channel 2	V <sub>IN</sub> = 12V, V <sub>OUT2</sub> = 1.5V, I <sub>OUT2</sub> = 25A, f <sub>SW</sub> = 600kHz	90.0%, see Figure 4
Load Transient of Channel 1	V <sub>IN</sub> = 12V, V <sub>OUT1</sub> = 3.3V, I <sub>STEP</sub> = 12.5A ~ 18.75A	V <sub>OPP</sub> = 157mV, see Figure 5
Load Transient of Channel 2	V <sub>IN</sub> = 12V, V <sub>OUT2</sub> = 1.5V, I <sub>STEP</sub> = 12.5A ~ 18.75A	V <sub>OPP</sub> = 127mV, see Figure 6

## QUICK START PROCEDURE

DC2268A-I is easy to set up to evaluate the performance of the LTM4650A-1. It can be easily inserted to an edge connector (SAMTEC MEC2-20-01-L-DV--TR) for testing and debugging. Please refer to Figure 2 for proper measurement setup and follow the procedure below:

1. Pull up the RUN1(J1 Pin 22) and RUN2(J1 Pin 24) between 1.4V to 5V or leave them floating.
2. With power off, connect the input power supply, load and meters as shown in Figure 2. Preset the load to 0A and V<sub>IN</sub> supply to 12V.
3. Turn on the power supply at the input. The output voltage in channel 1 should be 3.3V ± 1.5% (3.25V ~ 3.35V) and the output voltage in channel 2 should be 1.5V ± 1.5% (1.478V ~ 1.523V),

NOTE: Due to very small PCB size of the DC2268A board, the LTM43650A-1 module can be quite hot at heavy load. Cooling air is required. See Figures 7 and 8

4. Once the proper output voltage is established, adjust the load within the operating range and observe the output voltage regulation, output voltage ripple, efficiency and other parameters. Output ripple should be measured at C<sub>O3</sub> and C<sub>O4</sub>.
5. (Optional) LTM4650A-1 can be synchronized to an external clock signal. Remove R2 and apply a clock signal (0V~5V, square wave) to MODE-PLLIN pin.
6. (Optional) LTM4650A-1 can be configured for a 2-phase single output at up to 36A on DC2268A-I. Install 0Ω resistors on R26, R27, R28, R29, R32, and remove R14, R18 R30. Output voltage is set by R7 based on equation  $V_{OUT} = 0.6V (1 + 60.4k/R7)$ .

**Table 2. DC2268A Demo Circuit**

DEMO BOARD NUMBER	μModule REGULATOR ON THE BOARD	OUTPUT CURRENT
DC2268A-A	LTM4620	13A,13A
DC2268A-B	LTM4620A	13A,13A
DC2268A-C	LTM4628	8A, 8A
DC2268A-D	LTM4630	18A,18A
DC2268A-E	LTM4630-1	18A,18A
DC2268A-F	LTM4630A	18A, 18A
DC2268A-G	LTM4631	10A, 10A
DC2268A-H	LTM4650-1	25A, 25A
DC2268A-I	LTM4650A-1	25A, 25A

**QUICK START PROCEDURE**

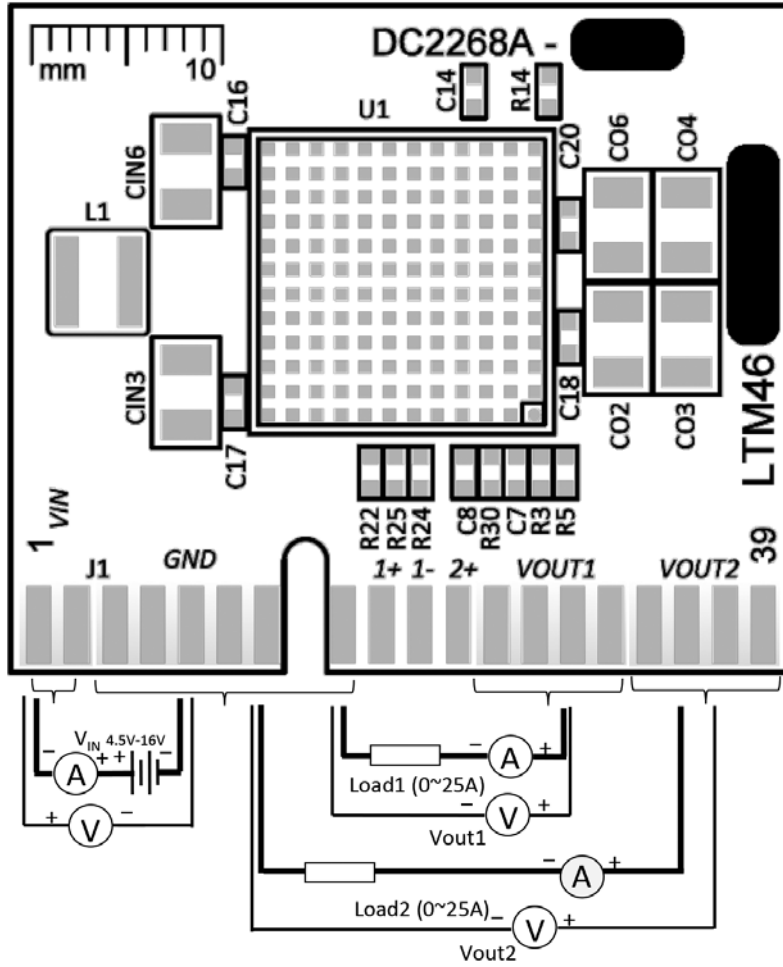


Figure 2. Test Setup of DC2268A-I

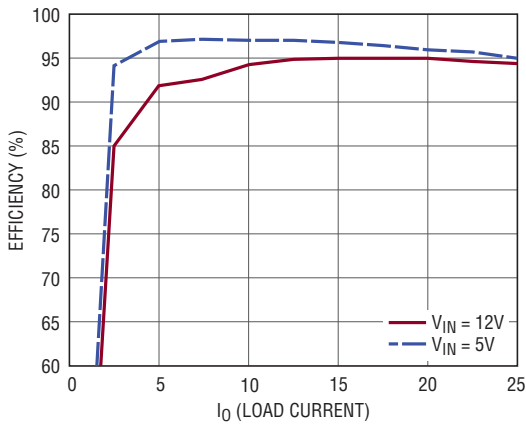


Figure 3. Measured Efficiency on Channel 1 ( $V_{OUT1} = 3.3V$ ,  $f_{sw} = 600kHz$ , Channel 2 Disabled)

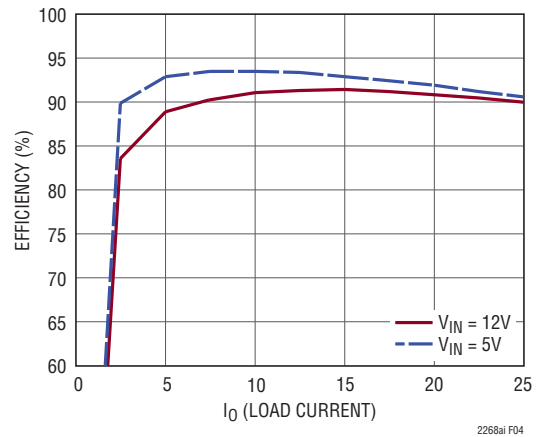


Figure 4. Measured Efficiency on Channel 2 ( $V_{OUT2} = 1.5V$ ,  $f_{sw} = 600kHz$ , Channel 1 Disabled)

## QUICK START PROCEDURE

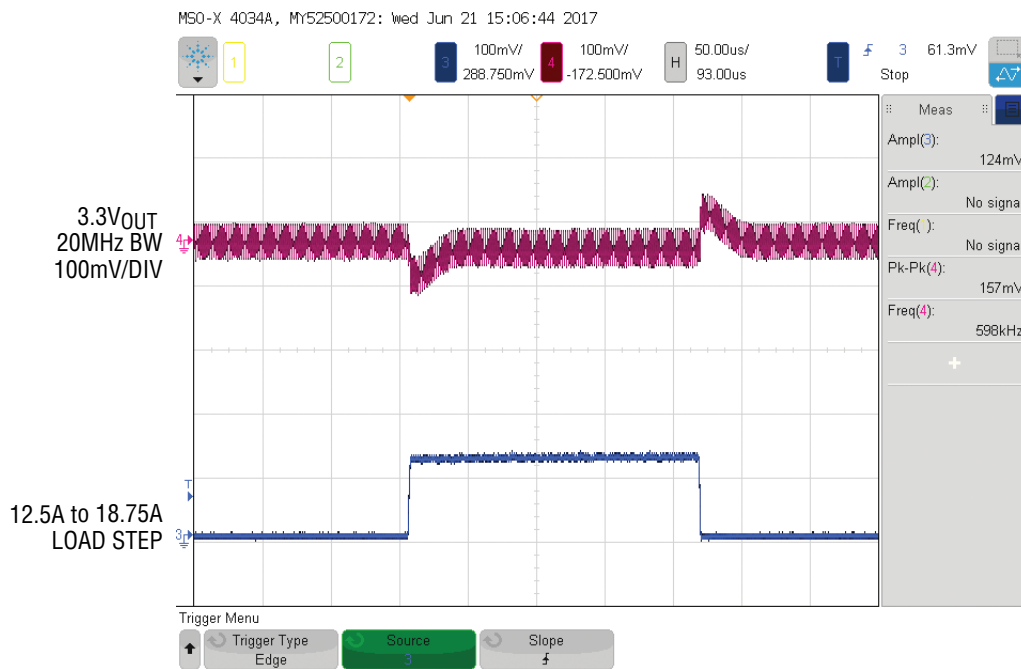


Figure 5. Measured Channel 1 12.5A to 18.75A Load Transient ( $V_{IN} = 12V$ ,  $V_{OUT1} = 3.3V$ )

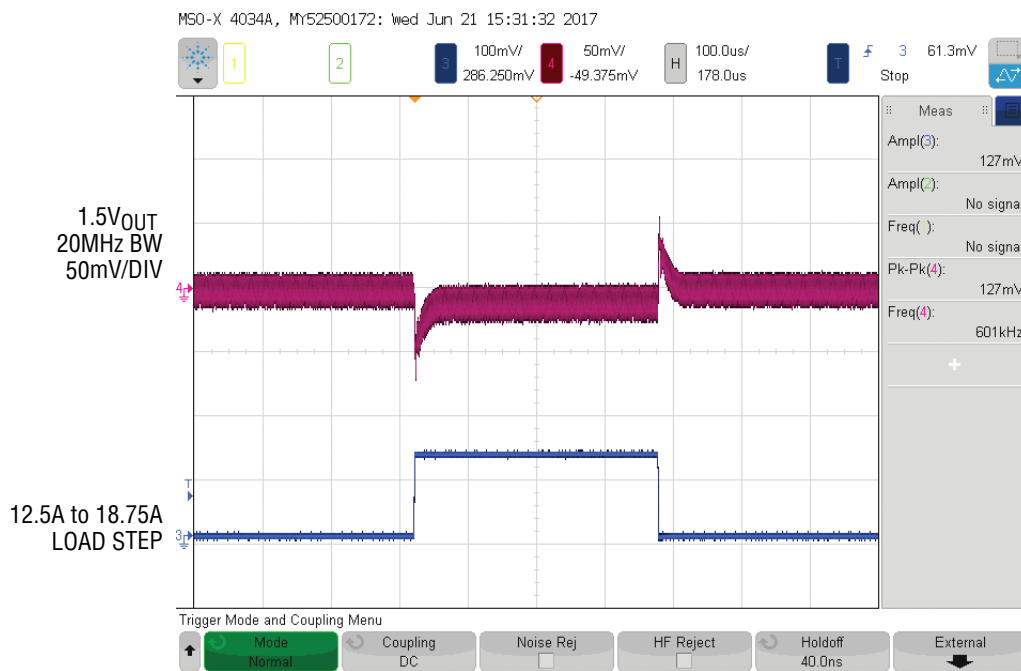


Figure 6. Measured Channel 12.5A to 18.75A Load Transient ( $V_{IN} = 12V$ ,  $V_{OUT2} = 1.5V$ )

**QUICK START PROCEDURE**

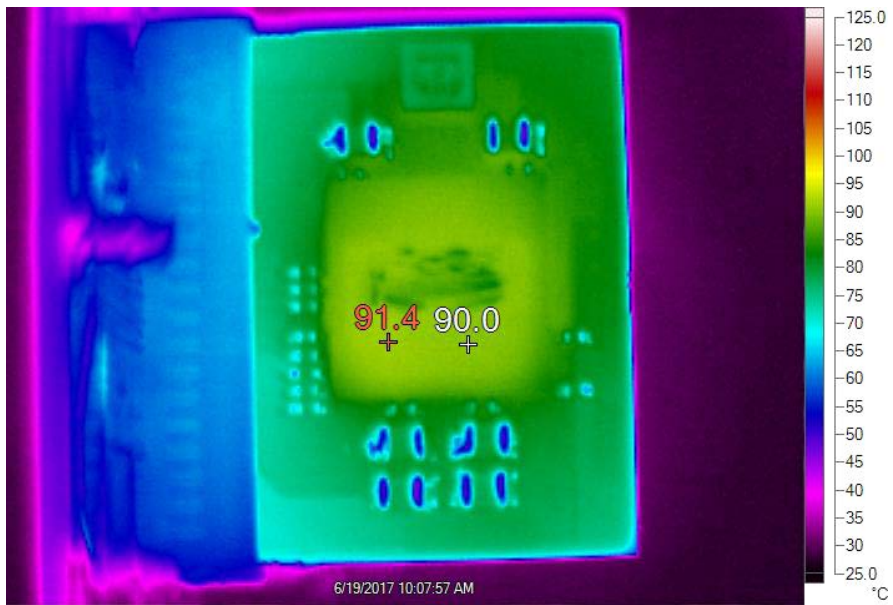


Figure 7. Thermal Performance at  $V_{IN} = 12V$ ,  $V_{OUT1} = 3.3V/11A$ ,  $V_{OUT2} = 1.5V/11A$ ,  $f_{SW} = 600kHz$ ,  $T_A = 23^\circ C$ , No Forced Airflow

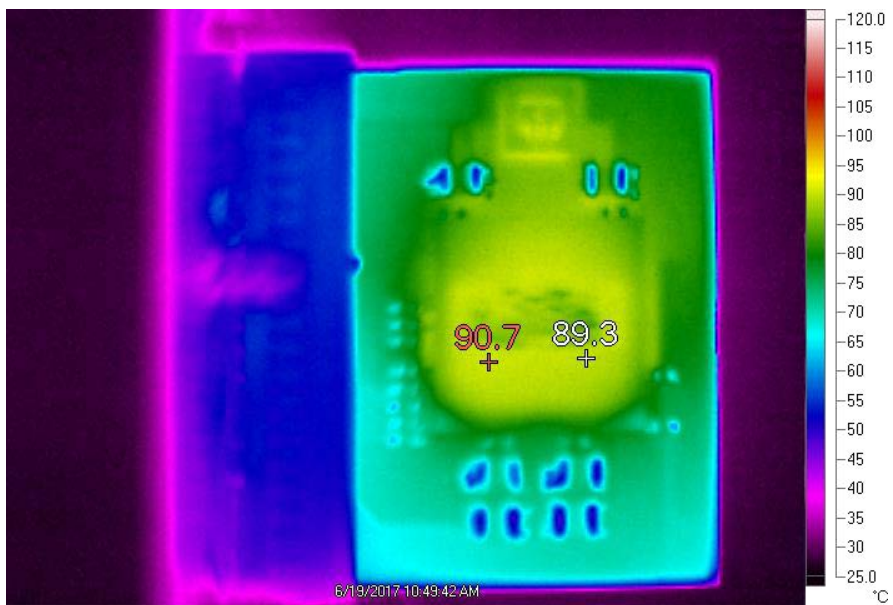


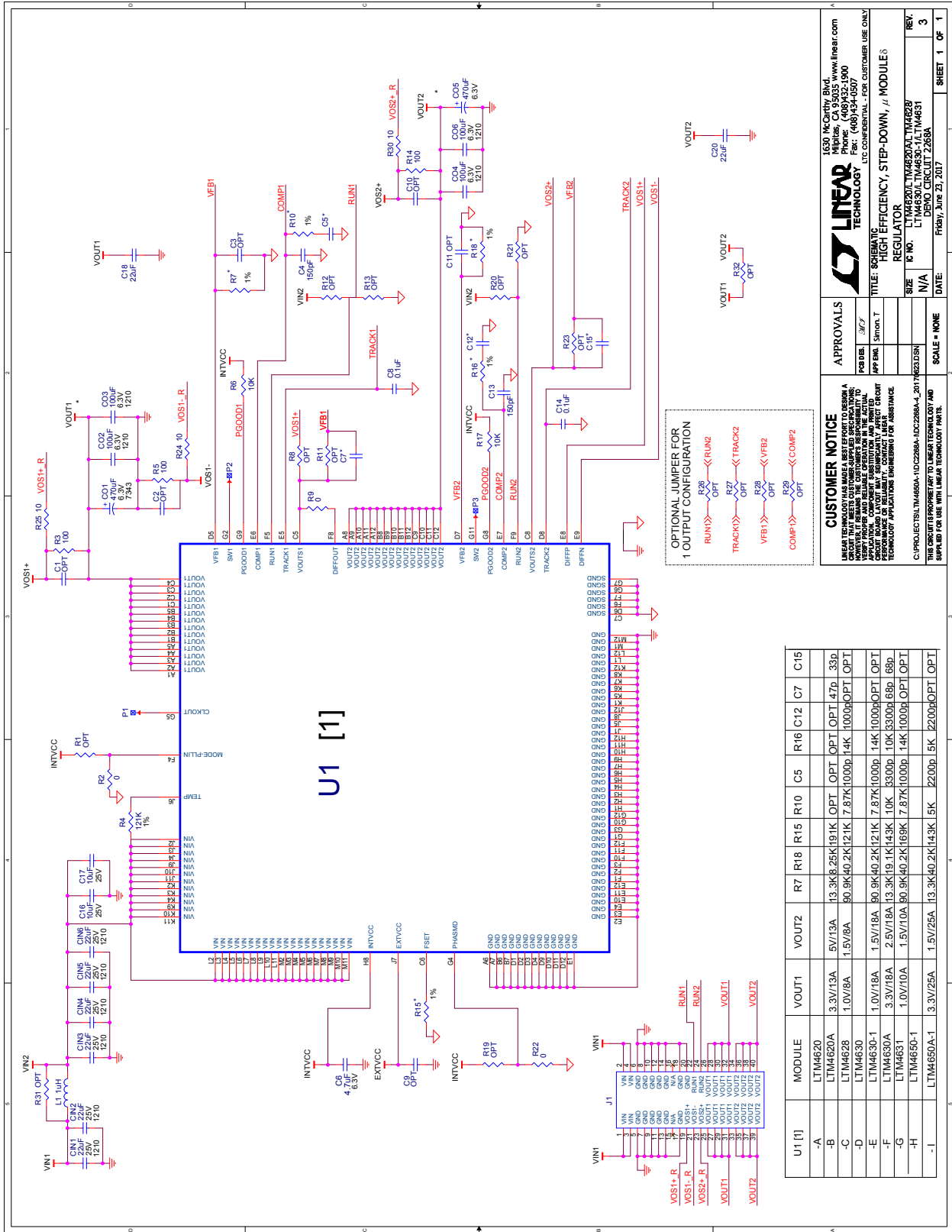
Figure 8. Thermal Performance at  $V_{IN} = 12V$ ,  $V_{OUT1} = 3.3V/19A$ ,  $V_{OUT2} = 1.5V/19A$ ,  $f_{SW} = 600kHz$ ,  $T_A = 23^\circ C$ , 400LFM Airflow

# DEMO MANUAL DC2268A-I

## PARTS LIST

ITEM	QTY	REFERENCE	PART DESCRIPTION	MANUFACTURER/PART NUMBER
<b>Required Circuit Components</b>				
1	6	CIN1, CIN2, CIN3, CIN4, CIN5, CIN6	CAP, 1210 22μF 10% 25V X5R	AVX 12103D226KAT2A
2	2	C01, C05	CAP, 7343 470μF 20% 6.3V POSCAP	PANASONIC 6TPF470MAH
3	4	C02, C03, C04, C06	CAP, 1210 100μF 10% 6.3V X5R	AVX 12106D107KAT2A
4	1	C6	CAP, 0603 4.7μF 20% 6.3V X5R	AVX 06036D475MAT2A
5	2	C7, C15	CAP, 0603 68pF 5% 50V COG / NPO	AVX 06035A680JAT2A
6	2	C8, C14	CAP, 0603 0.1μF 10% 25V X7R	AVX 06033C104KAT2A
7	2	C5, C12	CAP, 0603 2200pF 5% 16V COG	AVX 0603YC222JAT2A
8	2	C16, C17	CAP, 0603 10μF 20% 25V X5R	TDK C1608X5R1E106M080AC
9	2	C18, C20	CAP, 0603 22μF 20% 6.3V X5R	TDK C1608X5R0J226M080AC
10	1	L1	IND, 1.0μH	COILCRAFT XAL5030-102MEC
11	2	R2, R22	RES, 0603 0Ω JUMPER	VISHAY CRCW06030000Z0EA
12	3	R3, R5, R14	RES, 0603 100Ω 5% 0.1W	VISHAY CRCW0603100RJNEA
13	1	R4	RES, 0603 121k 1% 0.1W	VISHAY CRCW0603121KFKEA
14	2	R6, R17	RES, 0603 10k 5% 0.1W	VISHAY CRCW060310K0JNEA
15	1	R7	RES, 0603 13.3k 1% 0.1W	VISHAY CRCW060313K3FKEA
16	1	R9	RES, 0603 0Ω	VISHAY CRCW06030000Z0EA
17	2	R10, R16	RES, 0603 5k 1% 0.1W	VISHAY CRCW0605K00FKEA
18	1	R15	RES, 0603 143k 1% 0.1W	VISHAY CRCW0603143KFKEA
19	1	R18	RES, 0603 40.2k 1% 0.1W	VISHAY CRCW060340K2FKEA
20	3	R24, R25, R30	RES, 0603 10Ω 5% 0.1W	VISHAY CRCW060310R0JNEA
21	1	U1	IC, VOLTAGE REGULATOR LGA	LINEAR TECH. LTM4650AEV-1#PBF
<b>Additional Demo Board Circuit Components</b>				
1	0	C1, C2, C3, C4, C9, C10, C11, C13	CAP, 0603 OPTION	OPTION
2	0	R1, R8, R11, R12, R13, R19, R20, R21, R23, R26, R27, R28, R29	RES, 0603 OPTION	OPTION
3	0	R31, R32	RES, 2512 OPTION	OPTION
<b>Hardware: For Demo Board Only</b>				
1	1	J1	CONN., CARD EDGE 1.6mm	SAMTEC MEC2-20-01-L-DV--TR

**SCHEMATIC DIAGRAM**



**CUSTOMER NOTICE**  
 LINEAR TECHNOLOGY HAS BEEN ADVISED THAT SOME CUSTOMERS ARE USING THIS SCHEMATIC TO DESIGN PRODUCTS THAT ARE NOT APPROVED BY LINEAR TECHNOLOGY. LINEAR TECHNOLOGY IS NOT RESPONSIBLE FOR ANY DAMAGE TO PERSONS OR PROPERTY CAUSED BY THE USE OF THIS SCHEMATIC. CUSTOMERS ARE ADVISED TO CONTACT LINEAR TECHNOLOGY FOR MORE INFORMATION.  
 APPROVALS: [ ]  
 TITLE: SCHEMATIC HIGH EFFICIENCY, STEP-DOWN,  $\mu$  MODULES  
 REGULATOR  
 IC NO. LTM4620A, LTM4628, LTM4630, LTM4631, LTM4630A, LTM4631A, LTM4650-1, LTM4650A-1  
 DATE: JUN 23, 2017

**OPTIONAL JUMPER FOR 1 OUTPUT CONFIGURATION**  
 RUN1 <-> R26 OPT <-> RUN2  
 TRACK1 <-> R27 OPT <-> TRACK2  
 VFB1 <-> R28 OPT <-> VFB2  
 COMP1 <-> R29 OPT <-> COMP2

# DEMO MANUAL DC2268A-I

---

## DEMONSTRATION BOARD IMPORTANT NOTICE

Linear Technology Corporation (LTC) provides the enclosed product(s) under the following **AS IS** conditions:

This demonstration board (DEMO BOARD) kit being sold or provided by Linear Technology is intended for use for **ENGINEERING DEVELOPMENT OR EVALUATION PURPOSES ONLY** and is not provided by LTC for commercial use. As such, the DEMO BOARD herein may not be complete in terms of required design-, marketing-, and/or manufacturing-related protective considerations, including but not limited to product safety measures typically found in finished commercial goods. As a prototype, this product does not fall within the scope of the European Union directive on electromagnetic compatibility and therefore may or may not meet the technical requirements of the directive, or other regulations.

If this evaluation kit does not meet the specifications recited in the DEMO BOARD manual the kit may be returned within 30 days from the date of delivery for a full refund. **THE FOREGOING WARRANTY IS THE EXCLUSIVE WARRANTY MADE BY THE SELLER TO BUYER AND IS IN LIEU OF ALL OTHER WARRANTIES, EXPRESSED, IMPLIED, OR STATUTORY, INCLUDING ANY WARRANTY OF MERCHANTABILITY OR FITNESS FOR ANY PARTICULAR PURPOSE. EXCEPT TO THE EXTENT OF THIS INDEMNITY, NEITHER PARTY SHALL BE LIABLE TO THE OTHER FOR ANY INDIRECT, SPECIAL, INCIDENTAL, OR CONSEQUENTIAL DAMAGES.**

The user assumes all responsibility and liability for proper and safe handling of the goods. Further, the user releases LTC from all claims arising from the handling or use of the goods. Due to the open construction of the product, it is the user's responsibility to take any and all appropriate precautions with regard to electrostatic discharge. Also be aware that the products herein may not be regulatory compliant or agency certified (FCC, UL, CE, etc.).

No License is granted under any patent right or other intellectual property whatsoever. **LTC assumes no liability for applications assistance, customer product design, software performance, or infringement of patents or any other intellectual property rights of any kind.**

LTC currently services a variety of customers for products around the world, and therefore this transaction **is not exclusive**.

**Please read the DEMO BOARD manual prior to handling the product.** Persons handling this product must have electronics training and observe good laboratory practice standards. **Common sense is encouraged.**

This notice contains important safety information about temperatures and voltages. For further safety concerns, please contact a LTC application engineer.

Mailing Address:

Linear Technology  
1630 McCarthy Blvd.  
Milpitas, CA 95035

Copyright © 2004, Linear Technology Corporation