

MATERIALS AND FINISHES

BODY ZINC
PLATED TIN (100 MICROINCHES MIN)

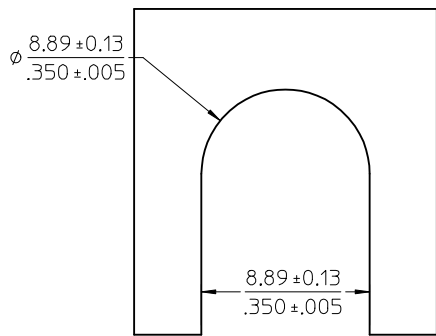
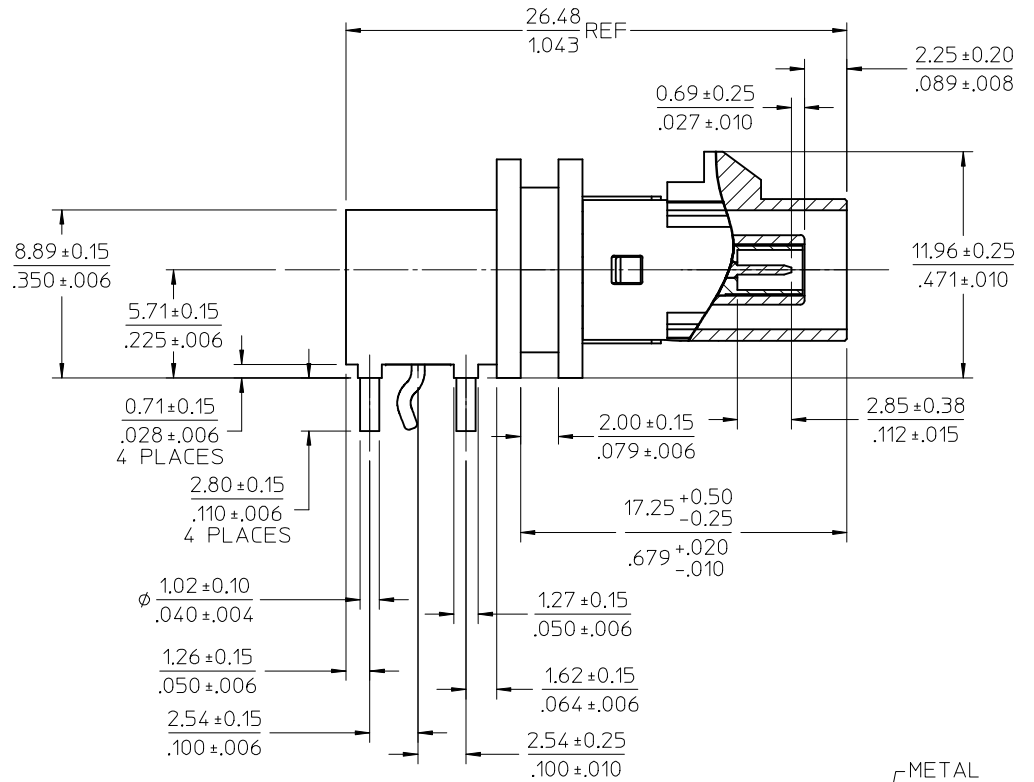
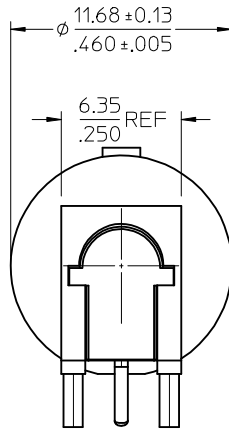
CENTER CONTACT PHOSPHOR BRONZE
PLATED GOLD (30 MICROINCHES MIN)

INSULATOR TEFLON

OUTER CASING: HIGH TEMPERATURE PLASTIC
KEYING: SEE SHEET 2
COLOR: SEE SHEET 2

RETENTION SPECIFICATION:

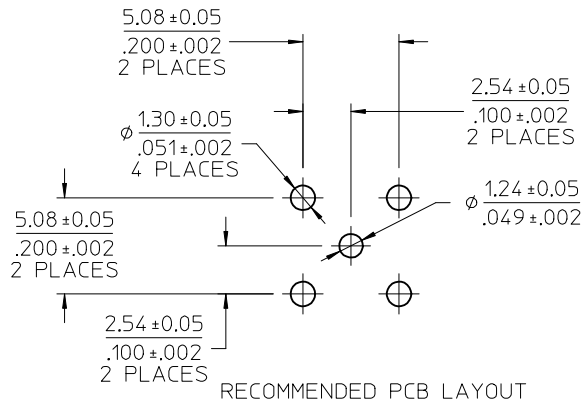
THE FAKRA CONNECTOR WILL WITHSTAND
A LONGITUDINAL FORCE OF 110 N (24.75 LBS)



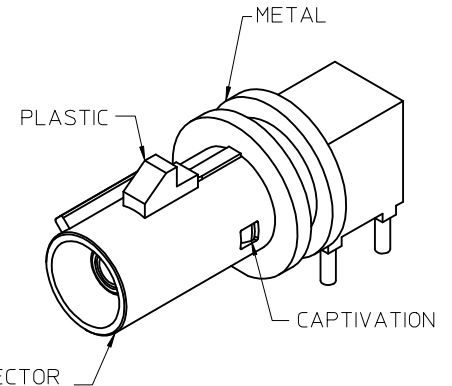
RECOMMENDED PANEL LAYOUT

1.89mm (.074 inch) MAX PANEL

PART # SEE SHEET 2

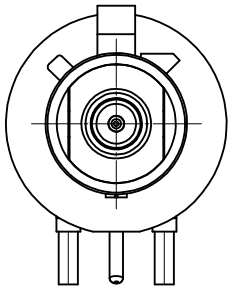


RECOMMENDED PCB LAYOUT

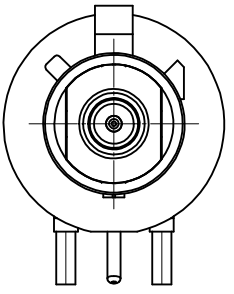


FAKRA CONNECTOR
KEYING CODE D SHOWN

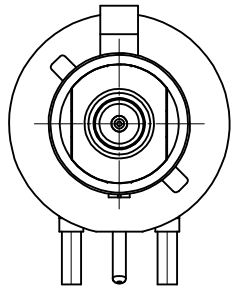
ADDED DIM. AND SHEET 3 PER RF14-E093 EC NO: URF2014-0486 DRWNLIN 2014/02/25 CHKD: DRWNLIN APPR: MHUANG 2014/02/27 REV: A7	QUALITY SYMBOLS ▽=0 ▽=0	GENERAL TOLERANCES (UNLESS SPECIFIED)		DIMENSION STYLE MM/IN		SCALE	DESIGN UNITS METRIC	THIRD ANGLE PROJECTION		
		4 PLACES ± --- ± ---	3 PLACES ± --- ± ---	2 PLACES ± --- ± ---	1 PLACE ± --- ± ---	DRAWN BY SSS	DATE 2001/02/28	TITLE SMB JACK, R/A, FAKRA KINKED TAIL, 50 OHMS SMB-J/PCB	MOLEX INCORPORATED	
		ANGULAR ± 2 °		DRAFT WHERE APPLICABLE MUST REMAIN WITHIN DIMENSIONS	APPROVED BY MHUANG	DATE 2010/04/26	DOCUMENT NO. SD-73415-286			
		THIS DRAWING CONTAINS INFORMATION THAT IS PROPRIETARY TO MOLEX INCORPORATED AND SHOULD NOT BE USED WITHOUT WRITTEN PERMISSION								



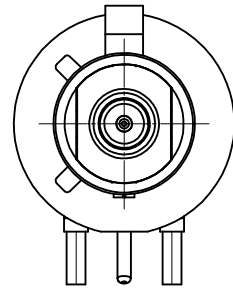
CODE - A



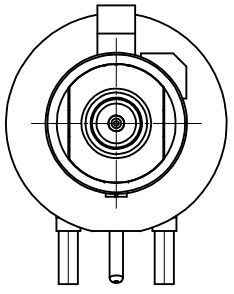
CODE - B



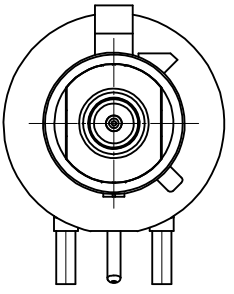
CODE - C



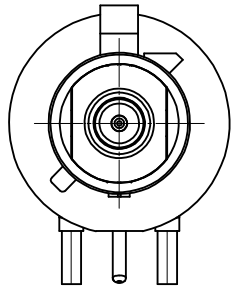
CODE - D



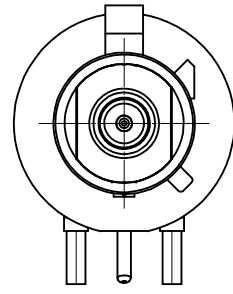
CODE - E



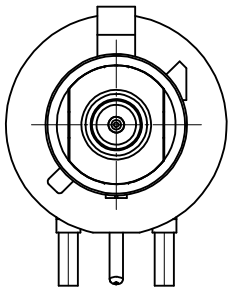
CODE - F



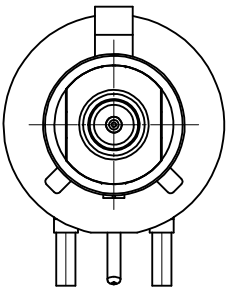
CODE - G



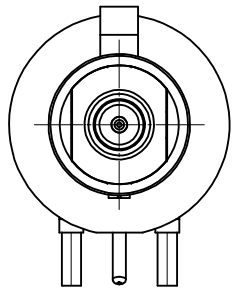
CODE - H



CODE - I



CODE - K



CODE - Z

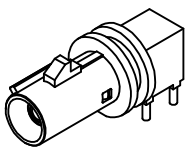
Z	WATER BLUE	73415-2870
K	CURRY YELLOW	73415-2869
I	BEIGE	73415-2868
H	VIOLET	73415-2867
G	GRAY	73415-2866
F	BROWN	73415-2865
E	GREEN	73415-2864
D	BORDEAUXVIOLET	73415-2863
C	BLUE	73415-2862
B	CREAM WHITE	73415-2861
A	BLACK	73415-2860
KEYING CODE	COLOR	PART NO.

CHG: SEE SHEET 1	2014/02/25
EC NO: URF2014-0486	
DRW: INELIN	
CHKD:	
APPR: MHUANG	2014/02/27
REV	DESCRIPTION
A7	

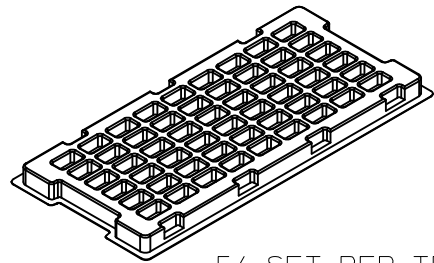
QUALITY SYMBOLS	GENERAL TOLERANCES (UNLESS SPECIFIED)
▽=0	mm INCH
▽=0	4 PLACES ± --- ± ---
	3 PLACES ± --- ± ---
	2 PLACES ± --- ± ---
	1 PLACE ± --- ± ---
	ANGULAR ± 2 °
	DRAFT WHERE APPLICABLE MUST REMAIN WITHIN DIMENSIONS

DIMENSION STYLE	
DRAWN BY	DATE
SSS	2001/02/28
CHECKED BY	DATE
TEF	2001/02/28
APPROVED BY	DATE
MHUANG	2010/04/26
MATERIAL NO.	
SEE TABLE	
SIZE	
C	

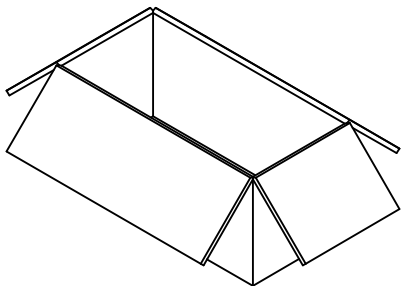
SCALE	DESIGN UNITS	THIRD ANGLE PROJECTION
5:1	METRIC	
TITLE		
SMB JACK, R/A, FAKRA KINKED TAIL, 50 OHMS SMB-J/PCB		
MOLEX INCORPORATED		SHEET NO.
SD-73415-286		2 OF 3
THIS DRAWING CONTAINS INFORMATION THAT IS PROPRIETARY TO MOLEX INCORPORATED AND SHOULD NOT BE USED WITHOUT WRITTEN PERMISSION		



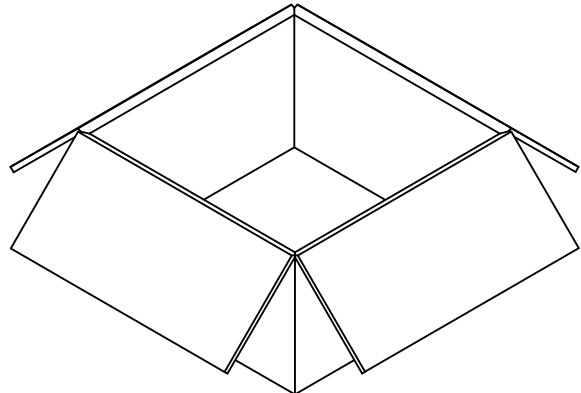
P/N 73415-286X



54 SET PER TRAY
TRAY P/N 89707-0220
361mmX169mmX18.5mm



540 SET PER INNER
CARTON BOX
P/N 96707-0001
367mmX173mmX188mm



1080 SET PER OUTER
CARTON BOX
P/N 96708-0005
385mmX367mmX206mm

SEE SHEET 1 IEC NO: URF2014-0486 2014/02/25 DRWNLIN CHKD: APPR:MHUANG 2014/02/27	QUALITY SYMBOLS = 0 = 0	GENERAL TOLERANCES (UNLESS SPECIFIED) <table border="1"> <thead> <tr> <th></th> <th>mm</th> <th>INCH</th> </tr> </thead> <tbody> <tr> <td>4 PLACES</td> <td>± 0.15</td> <td>± 0.006</td> </tr> <tr> <td>3 PLACES</td> <td>± 0.25</td> <td>± 0.010</td> </tr> <tr> <td>2 PLACES</td> <td>± 0.35</td> <td>± 0.014</td> </tr> <tr> <td>1 PLACE</td> <td>± 0.50</td> <td>± 0.020</td> </tr> </tbody> </table>		mm	INCH	4 PLACES	± 0.15	± 0.006	3 PLACES	± 0.25	± 0.010	2 PLACES	± 0.35	± 0.014	1 PLACE	± 0.50	± 0.020	DIMENSION STYLE MM/IN DRAWN BY: SSS DATE: 2001/02/28 CHECKED BY: TEF DATE: 2001/02/28 APPROVED BY: MHUANG DATE: 2010/04/26	SCALE: TITLE: SMB JACK, R/A, FAKRA KINKED TAIL, 50 OHMS SMB-J/PCB DESIGN UNITS: METRIC THIRD ANGLE PROJECTION	MATERIAL NO. MOLEX INCORPORATED DOCUMENT NO. SD-73415-286 SHEET NO. 3 OF 3
		mm	INCH																	
	4 PLACES	± 0.15	± 0.006																	
	3 PLACES	± 0.25	± 0.010																	
2 PLACES	± 0.35	± 0.014																		
1 PLACE	± 0.50	± 0.020																		
DRAFT WHERE APPLICABLE MUST REMAIN WITHIN DIMENSIONS	SEE SHEET 2	THIS DRAWING CONTAINS INFORMATION THAT IS PROPRIETARY TO MOLEX INCORPORATED AND SHOULD NOT BE USED WITHOUT WRITTEN PERMISSION																		
A7	REV:	DESCRIPTION:																		
SEE SHEET 1 IEC NO: URF2014-0486 2014/02/25 DRWNLIN CHKD: APPR:MHUANG 2014/02/27	QUALITY SYMBOLS = 0 = 0	GENERAL TOLERANCES (UNLESS SPECIFIED) <table border="1"> <thead> <tr> <th></th> <th>mm</th> <th>INCH</th> </tr> </thead> <tbody> <tr> <td>4 PLACES</td> <td>± 0.15</td> <td>± 0.006</td> </tr> <tr> <td>3 PLACES</td> <td>± 0.25</td> <td>± 0.010</td> </tr> <tr> <td>2 PLACES</td> <td>± 0.35</td> <td>± 0.014</td> </tr> <tr> <td>1 PLACE</td> <td>± 0.50</td> <td>± 0.020</td> </tr> </tbody> </table>		mm	INCH	4 PLACES	± 0.15	± 0.006	3 PLACES	± 0.25	± 0.010	2 PLACES	± 0.35	± 0.014	1 PLACE	± 0.50	± 0.020	DIMENSION STYLE MM/IN DRAWN BY: SSS DATE: 2001/02/28 CHECKED BY: TEF DATE: 2001/02/28 APPROVED BY: MHUANG DATE: 2010/04/26	SCALE: TITLE: SMB JACK, R/A, FAKRA KINKED TAIL, 50 OHMS SMB-J/PCB DESIGN UNITS: METRIC THIRD ANGLE PROJECTION	MATERIAL NO. MOLEX INCORPORATED DOCUMENT NO. SD-73415-286 SHEET NO. 3 OF 3
	mm	INCH																		
4 PLACES	± 0.15	± 0.006																		
3 PLACES	± 0.25	± 0.010																		
2 PLACES	± 0.35	± 0.014																		
1 PLACE	± 0.50	± 0.020																		
DRAFT WHERE APPLICABLE MUST REMAIN WITHIN DIMENSIONS	SEE SHEET 2	THIS DRAWING CONTAINS INFORMATION THAT IS PROPRIETARY TO MOLEX INCORPORATED AND SHOULD NOT BE USED WITHOUT WRITTEN PERMISSION																		
A7	REV:	DESCRIPTION:																		