

Insulated cross-connector, No. of poles: 3, Mounting type: Plug in, Width: 16.2 mm, Colour: Blue

RAL: Ähnlich 5005

### Business data

Article number	27143.5
Article name	PQI 4/3 BU
GTIN (EAN)	4044211226879
Packaging unit	50
Quantity unit	PC
Weight per piece (not including packaging)	2.72 g
Weight per piece (including packaging)	2.78 g
Unit of weight	G
Customs number	85389099
Country of origin	DE
Prio-Article	27143.9
Product description	Insulated cross-connector

### Technical data

#### Dimensions

Length	4 mm
Width	16.2 mm
Height	19.4 mm
Pitch size	6.1 mm

#### Ratings

Max. voltage	800 V
Rated current	32 A
Current load, max.	32 A
Rated cross-section	4 mm <sup>2</sup>
Contamination degree	3

#### Connection data

No. of poles	3
--------------	---

#### Materials

Insulation housing	Polyamide 6.6
Flammability class UL 94	V-0
Working temperature, min.	-40 °C
Working temperature, max.	120 °C

#### Further technical data

Mounting type	Plug in
Insulation available	✓
Touch protection is available	✓
Number of bridged terminals	3

#### Environmental Product Compliance

REACH Conform	yes
REACH Candidate Substance Note	No
RoHS Conform	yes

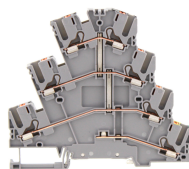
---

### Media

---

### Accessories

#### ##INVERSE##CONTA-CONNECT



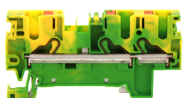
Three-level initiator terminal | Multi-wire terminal, Push-in connection, Mounting type: Mounting rail TS 35/7.5, Rated cross-section: 2.5 mm<sup>2</sup>, Width: 5.1 mm, Colour: Grey

Article number	Article name	GTIN (EAN)	Packaging unit
<u>27047.6</u>	PVMAK 2,5/SV GR	4044211227296	50 ST



Protective earth terminal, Push-in connection, Mounting type: Mounting rail TS 35/7.5, Rated cross-section: 4 mm<sup>2</sup>, Width: 6.1 mm, Colour: Green-yellow

Article number	Article name	GTIN (EAN)	Packaging unit
<u>27013.2</u>	PSL 4/2A GNYE	4044211215804	50 ST



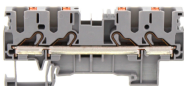
Protective earth terminal, Push-in connection, Mounting type: Mounting rail TS 35/7.5, Rated cross-section: 4 mm<sup>2</sup>, Width: 6.1 mm, Colour: Green-yellow

Article number	Article name	GTIN (EAN)	Packaging unit
<u>27015.2</u>	PSL 4/3A GNYE	4044211215842	50 ST



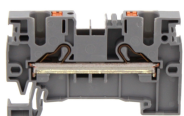
Protective earth terminal, Push-in connection, Mounting type: Mounting rail TS 35/7.5, Rated cross-section: 4 mm<sup>2</sup>, Width: 6.1 mm, Colour: Green-yellow

Article number	Article name	GTIN (EAN)	Packaging unit
<u>27017.2</u>	PSL 4/4A GNYE	4044211215880	50 ST



Feed-through terminal, Push-in connection, Mounting type: Mounting rail TS 35/7.5, Rated cross-section: 4 mm<sup>2</sup>, Width: 6.1 mm, Colour: Grey

Article number	Article name	GTIN (EAN)	Packaging unit
<u>27016.6</u>	PRK 4/4A GR	4044211215873	50



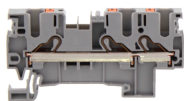
Feed-through terminal, Push-in connection, Mounting type: Mounting rail TS 35/7.5, Rated cross-section: 4 mm<sup>2</sup>, Width: 6.1 mm, Colour: Grey

Article number	Article name	GTIN (EAN)	Packaging unit
<u>27012.6</u>	PRK 4/2A GR	4044211215774	50

---

### ##INVERSE##CONTA-CONNECT

---



Feed-through terminal, Push-in connection, Mounting type: Mounting rail TS 35/7.5, Rated cross-section: 4 mm<sup>2</sup>, Width: 6.1 mm, Colour: Grey

Article number	Article name	GTIN (EAN)	Packaging unit
<u>27014.6</u>	PRK 4/3A GR	4044211215835	50

---

### ##INVERSE##CONTA-CONNECT

---