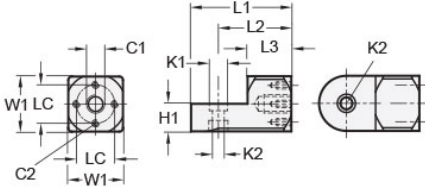




## MT20-SWMB-M12-AN

Ruland Swivel Mounting Block, Width/Height 30mm, Length 55mm, Black Anodized Aluminum



### Description

Ruland MT20-SWMB-M12-AN is a cross pattern swivel mounting block with an M12 tapped center hole, M4 threads in the cross, a 15mm base height, a 30mm width and height, a and 55mm overall length. It is designed to fit with Ruland modular mounting system swivel components that begin with MT20. MT20-SWMB-M12-AN is aluminum with a black anodized finish and screws are 304 stainless steel for added corrosion resistance when compared to unplated types. This swivel mounting block is used to support brackets for mounting sensors, screens, reflectors, plexiglass machine guards, and other industrial components. It has a cross pattern allowing the user to mount with a single M12 screw through the center of the bracket or with multiple M4 screws in the arms of the cross. The use of a cross pattern prevents the bracket from rotating if the mounted component has high mass or will have force applied to it such as a screen. An MT20-SWALK-M6-30 adjustable clamping handle can be used to rapidly reposition MT20-SWMB-M12-AN without the use of tools. It is manufactured by Otto Ganter, inventoried by Ruland, and RoHS3 compliant.

### Product Specifications

<b>Center Thread C1</b>	M12	<b>Cross Thread C2</b>	M4 x 4
<b>Counterbore 1 Diameter K1</b>	10 mm	<b>Counterbore 2 Diameter K2</b>	6.5 mm
<b>Width &amp; Height W1</b>	30 mm	<b>Base Height H1</b>	15 mm
<b>Center To Center LC</b>	20 mm	<b>Edge To Center Of Counterbore L2</b>	40 mm
<b>Overall Length L1</b>	55 mm	<b>Hub Length LH</b>	24 mm
<b>Material Specification</b>	Anodized Aluminum	<b>Manufacturer</b>	JW Winco/ Otto Ganter
<b>Country of Origin</b>	Germany	<b>Weight (lbs)</b>	0.184500
<b>UPC</b>	634529230046	<b>Tariff Code</b>	7609.00.0000
<b>UNSPC</b>	31162908		