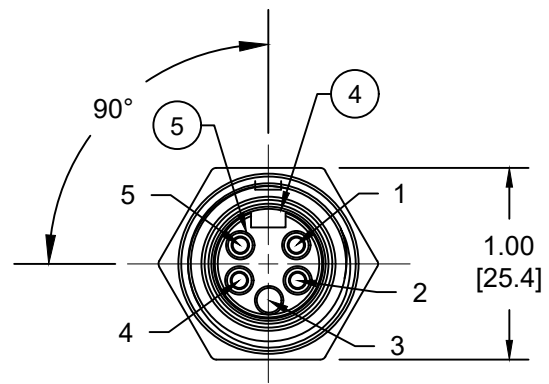
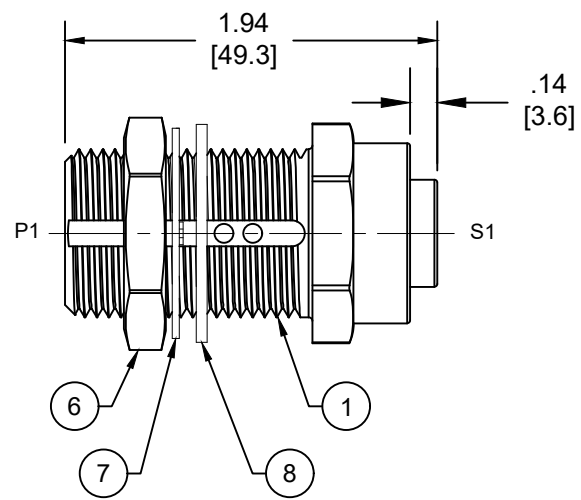
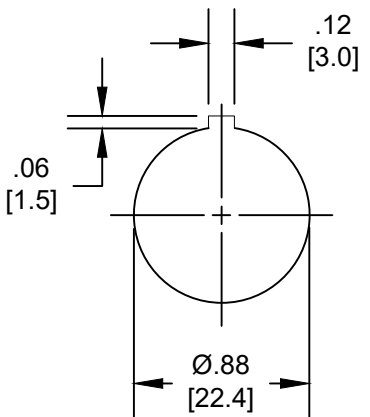


MALE INSERT - FRONT VIEW

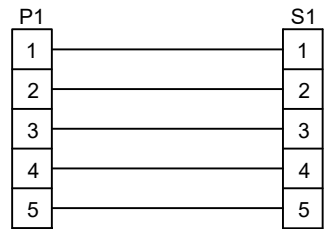


FEMALE INSERT - FRONT VIEW

- NOTES:
1. MATERIAL: AS NOTED
  2. FINISH: AS NOTED
  3. ELECTRICAL:
    - VOLTAGE: 400 PER IEC60664 <sup>(C)</sup>
    - 600V PER UL2238
    - CURRENT: 8A
  4. TEMP RATING: -20°TO +60°C
  5. PROTECTION: IP67 (WHEN MATED)
  6. COUPLING THREAD: 7/8-16UN
  7. CSA CERTIFIED FILE: LR6837
  8. ALL DIMENSIONS ARE FOR REFERENCE UNLESS TOLERANCED OR NOTED OTHERWISE



TYPICAL KNOCKOUT



WIRING DIAGRAM

|              |                 |
|--------------|-----------------|
| MATERIAL NO. | ENGINEERING NO. |
| 1300130541   | 1R5030          |

|      |                  |              |                                 |
|------|------------------|--------------|---------------------------------|
| 8    | GASKET           | NEOPRENE     | BLACK                           |
| 7    | THRUST WASHER    | NYLON        | WHITE                           |
| 6    | LOCKNUT          | BRASS        | NICKEL PLATED                   |
| 5    | SOCKET CONTACT   | COPPER ALLOY | GOLD OVER NICKEL                |
| 4    | FEMALE INSERT    | TPC          | GRAY <sup>(C)</sup>             |
| 3    | PIN CONTACT      | COPPER ALLOY | GOLD OVER NICKEL <sup>(C)</sup> |
| 2    | MALE INSERT      | TPC          | GRAY <sup>(C)</sup>             |
| 1    | RECEPTACLE SHELL | BRASS        | NICKEL PLATED                   |
| ITEM | DESCRIPTION      | MATERIAL     | FINISH                          |

|  |  |  |  |  |                        |  |  |  |  |   |  |  |  |  |  |  |  |  |  |
|--|--|--|--|--|------------------------|--|--|--|--|---|--|--|--|--|--|--|--|--|--|
| FUNCTIONAL SYMBOLS                                   |  |  |  |  |                        |  |  |  |  | THIS DRAWING CONTAINS INFORMATION THAT IS PROPRIETARY TO MOLEX ELECTRONIC TECHNOLOGIES, LLC AND SHOULD NOT BE USED WITHOUT WRITTEN PERMISSION |  |  |  |  |  |  |  |  |  |
| DIMENSION UNITS                                      |  |  |  |  | SCALE                  |  |  |  |  | CURRENT REV DESC: ITEM #2 WAS PVC. ITEM #4 WAS TPE.   |  |  |  |  |  |  |  |  |  |
| INCH/MM  |  |  |  |  | NTS                    |  |  |  |  |   |  |  |  |  |  |  |  |  |  |
| GENERAL TOLERANCES (UNLESS SPECIFIED)                |  |  |  |  |                        |  |  |  |  | EC NO: 698297   |  |  |  |  |  |  |  |  |  |
|  |  |  |  |  | mm                     |  |  |  |  | INCH  |  |  |  |  |  |  |  |  |  |
| 4 PLACES ±----                                       |  |  |  |  | ±----                  |  |  |  |  | DRWN: ABENJAMINLW 2021/05/31  |  |  |  |  |  |  |  |  |  |
| 3 PLACES ±----                                       |  |  |  |  | ±----                  |  |  |  |  | CHK'D: RSTONE 2022/03/16  |  |  |  |  |  |  |  |  |  |
| 2 PLACES ±----                                       |  |  |  |  | ±----                  |  |  |  |  | APPR: BWOODMAN 2022/03/26   |  |  |  |  |  |  |  |  |  |
| 1 PLACES ±----                                       |  |  |  |  | ±----                  |  |  |  |  | INITIAL REVISION:   |  |  |  |  |  |  |  |  |  |
| 0 PLACES ±----                                       |  |  |  |  | ±----                  |  |  |  |  | DRWN: BWOODMAN 2009/07/28   |  |  |  |  |  |  |  |  |  |
| ANGULAR TOL ± ---- °                                 |  |  |  |  |                        |  |  |  |  | APPR: JFMURPHY 2009/08/10   |  |  |  |  |  |  |  |  |  |
| DRAFT WHERE APPLICABLE MUST REMAIN WITHIN DIMENSIONS |  |  |  |  | THIRD ANGLE PROJECTION |  |  |  |  | DRAWING   |  |  |  |  |  |  |  |  |  |
|  |  |  |  |  | A-SIZE                 |  |  |  |  | SERIES  |  |  |  |  |  |  |  |  |  |
|  |  |  |  |  | 130013                 |  |  |  |  | MATERIAL NUMBER   |  |  |  |  |  |  |  |  |  |
|  |  |  |  |  | SEE CHART              |  |  |  |  | CUSTOMER  |  |  |  |  |  |  |  |  |  |
|  |  |  |  |  | GENERAL MARKET         |  |  |  |  | SHEET NUMBER  |  |  |  |  |  |  |  |  |  |
|  |  |  |  |  | 1 OF 1                 |  |  |  |  | DOCUMENT NUMBER   |  |  |  |  |  |  |  |  |  |
|  |  |  |  |  | SD-130013-012          |  |  |  |  | DOC TYPE/DOC PART/REVISION  |  |  |  |  |  |  |  |  |  |
|  |  |  |  |  | PSD 001 C              |  |  |  |  |   |  |  |  |  |  |  |  |  |  |

|                 |    |              |            |          |
|-----------------|----|--------------|------------|----------|
| DOCUMENT STATUS | P1 | RELEASE DATE | 2022/03/26 | 00:25:03 |
|-----------------|----|--------------|------------|----------|