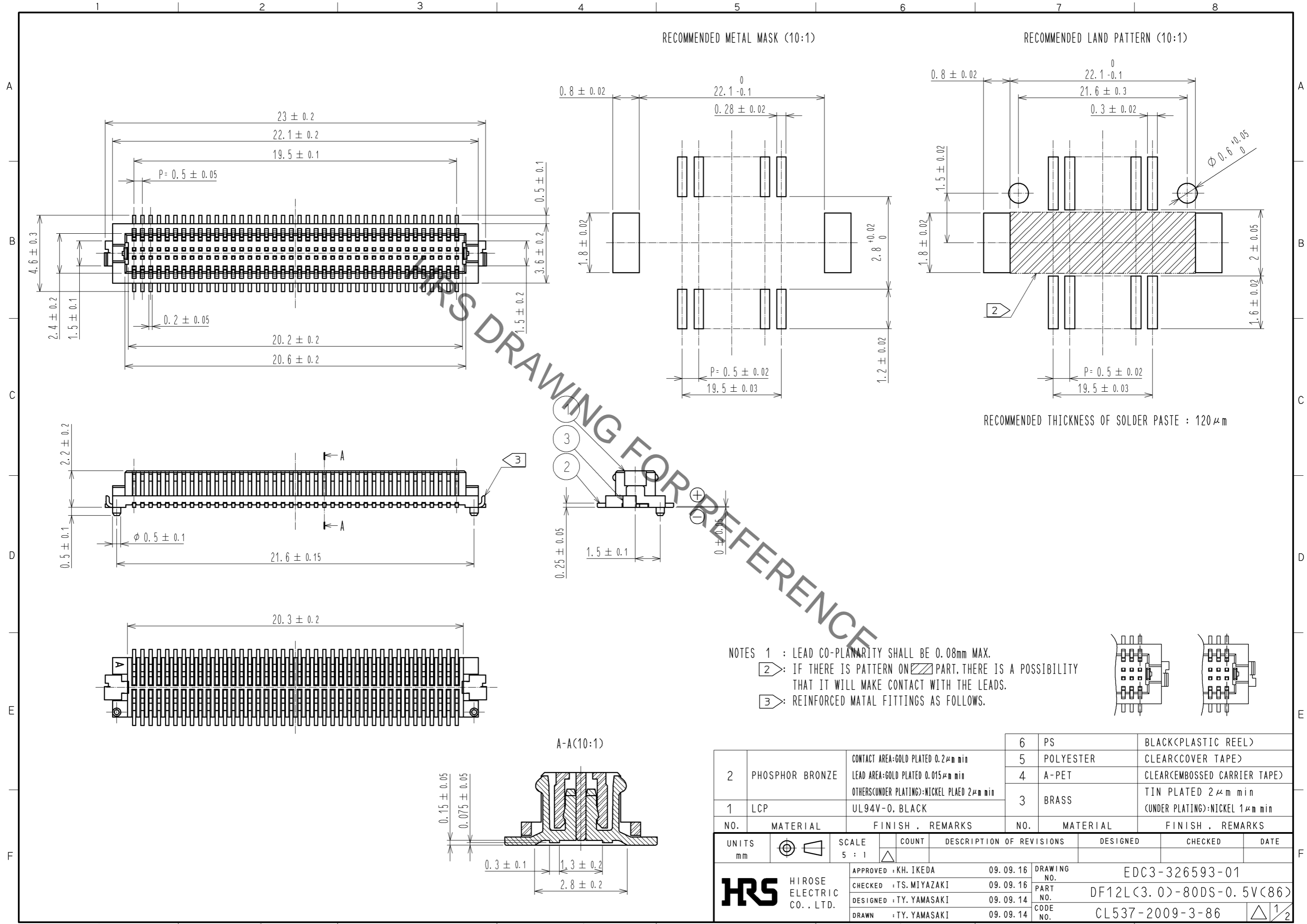
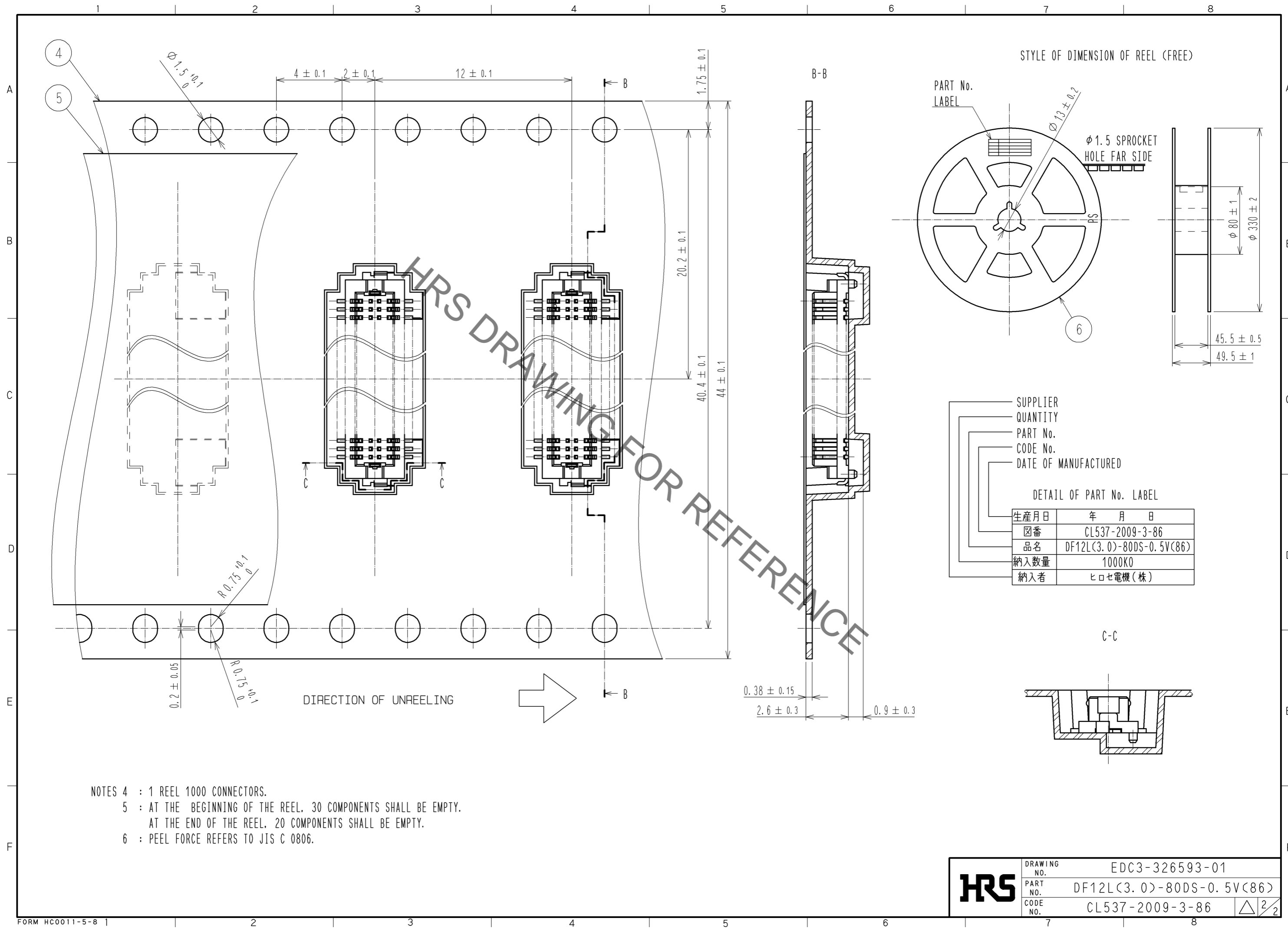


May.1.2023 Copyright 2023 HIROSE ELECTRIC CO., LTD. All Rights Reserved.
In case of consideration for using Automotive equipment / device which demand high reliability, kindly contact our sales window correspondents.



2	PHOSPHOR BRONZE	CONTACT AREA:GOLD PLATED 0.2μm min LEAD AREA:GOLD PLATED 0.015μm min OTHERS(UNDER PLATING):NICKEL PLATED 2μm min	6	PS	BLACK(PLASTIC REEL)
1	LCP	UL94V-0, BLACK	5	POLYESTER	CLEAR(COVER TAPE)
			4	A-PET	CLEAR(EMBOSSD CARRIER TAPE)
			3	BRASS	TIN PLATED 2μm min (UNDER PLATING):NICKEL 1μm min
NO.	MATERIAL	FINISH . REMARKS	NO.	MATERIAL	FINISH . REMARKS
UNITS mm		SCALE 5 : 1	COUNT		DESCRIPTION OF REVISIONS
APPROVED : KH. IKEDA		09.09.16	DESIGNED		
CHECKED : TS. MIYAZAKI		09.09.16	CHECKED		
DESIGNED : TY. YAMASAKI		09.09.14	DATE		
DRAWN : TY. YAMASAKI		09.09.14			
HRS HIROSE ELECTRIC CO., LTD.		DRAWING NO. EDC3-326593-01		PART NO. DF12L(3.0)-80DS-0.5V(86)	
		CODE NO. CL537-2009-3-86		1/2	

May.1.2023 Copyright 2023 HIROSE ELECTRIC CO., LTD. All Rights Reserved.
In case of consideration for using Automotive equipment / device which demand high reliability, kindly contact our sales window correspondents.



- NOTES 4 : 1 REEL 1000 CONNECTORS.
5 : AT THE BEGINNING OF THE REEL, 30 COMPONENTS SHALL BE EMPTY.
AT THE END OF THE REEL, 20 COMPONENTS SHALL BE EMPTY.
6 : PEEL FORCE REFERS TO JIS C 0806.

HRS	DRAWING NO.	EDC3-326593-01
	PART NO.	DF12L(3.0)-80DS-0.5V(86)
	CODE NO.	CL537-2009-3-86
		△ 2/2