

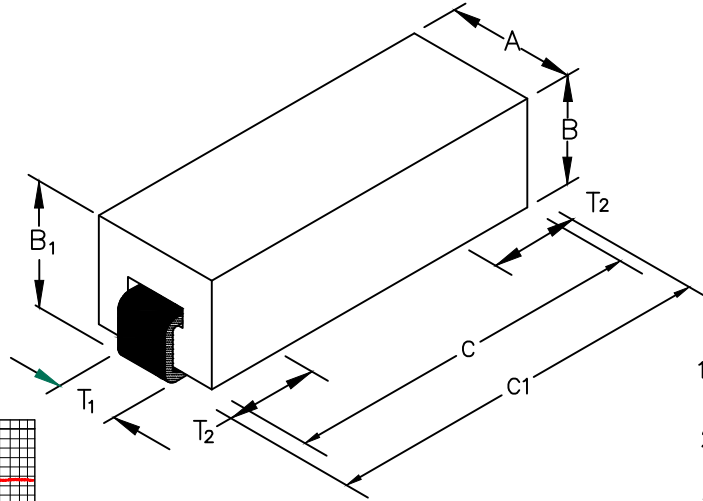
PHYSICAL DIMENSIONS:

- A 3.05 [.120] ± 0.08 [.003]
- B 2.54 [.100] ± 0.08 [.003]
- B₁ 3.05 [.120] ± MAX
- C 8.51 [.335] ± 0.23 [.009]
- C₁ 9.53 [.375] ± MAX

WIRE DIMENSIONS:

- T₁ 1.27 [.050] ± 0.05 [.002]
- T₂ 1.52 [.060] ± 0.51 [.020]

28F0121-1SR-10



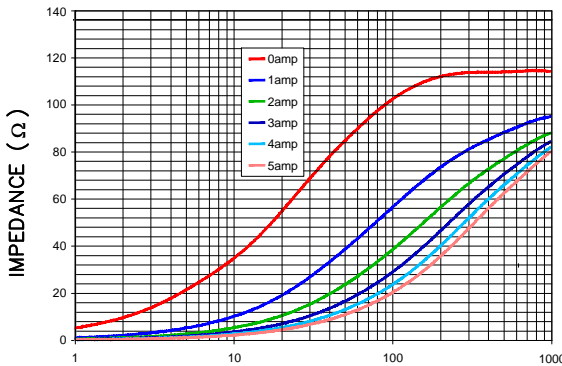
ELECTRICAL CHARACTERISTICS:

Z @ 100MHz (Ω)	DCR (Ω)	Rated Current
Nominal	96	
Minimum	72	
Maximum	120	10,000 mA

NOTES: UNLESS OTHERWISE SPECIFIED

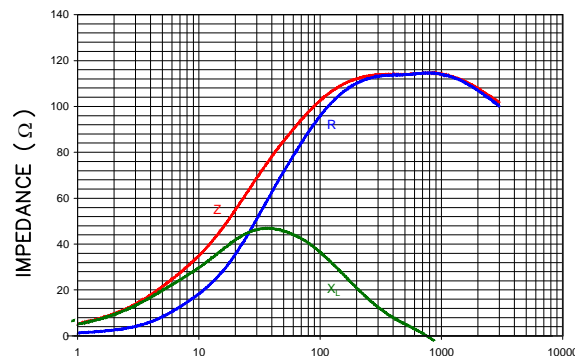
1. TAPED AND REELED per CURRENT EIA SPECIFICATIONS 13" REELS, 2500 PCS/REEL.
2. COMPONENTS SHOULD BE ADEQUATELY PREHEATED BEFORE SOLDERING.
3. REF. CARRIER TAPE SPECIFICATION # CART121-13.

Z vs. FREQUENCY
IMPEDANCE UNDER DC BIAS



FREQUENCY (MHz)

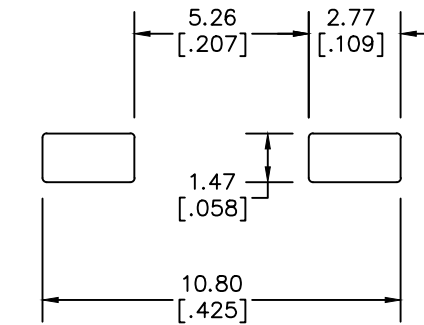
|Z|, R, AND X vs. FREQUENCY



FREQUENCY (MHz)

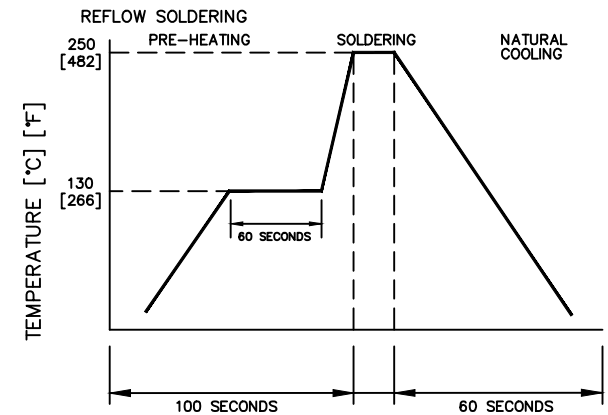
Z R X_L

LAND PATTERNS FOR REFLOW SOLDERING



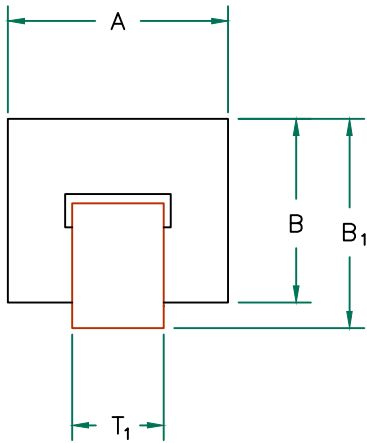
(For wave soldering, add 0.762 [.030] to this dimension.)

RECOMMENDED SOLDERING CONDITIONS

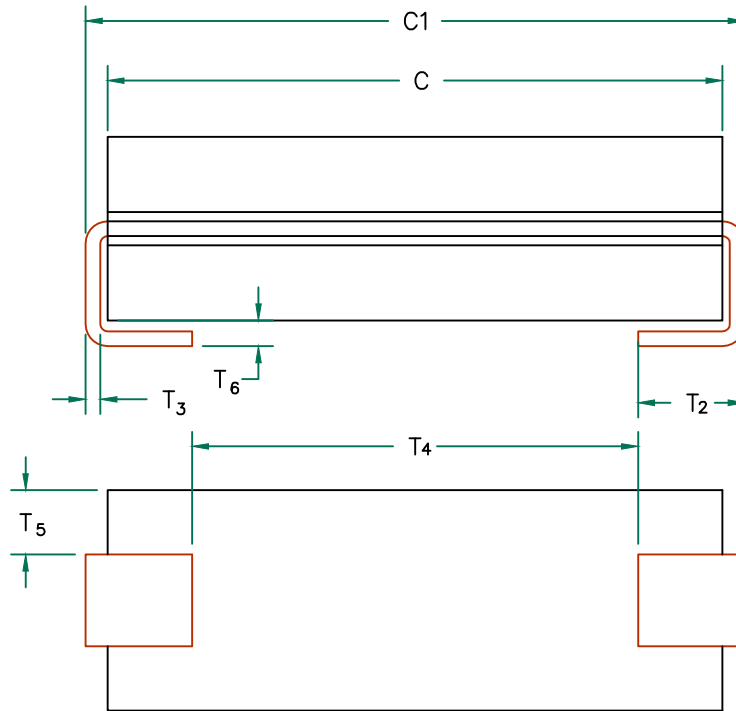


DIMENSIONS ARE IN mm [INCHES]				This print is the property of Laird Tech. and is loaned in confidence subject to return upon request and with the understanding that no copies shall be made without the written consent of Laird Tech. All rights to design or invention are reserved.		Laird	
G	UPDATE LOGO	04/23/15	QIU	REV	PART TYPE:	DRAWN BY:	
F	UPDATE COMPANY LOGO	10/24/08	JRK	G	ASSEMBLY	JRK	
E	UPDATE LANDPATTERN ADD ROHS SYMBOL	08/09/07	JRK	PROJECT/PART NUMBER:		28F0121-1SR-10	
D	UPDATE COMPANY LOGO	04/19/07	JRK	DATE:	SCALE:	10 : 1	
C	ADD KGS TO WGT&LBS TO PART WGT	09/13/05	JRK	CAD #	H0121	TOOL #	
B	CHANGE RATED CURRENT FROM 5000mA	02/17/04	JRK	DATE:	10/06/03	SHEET:	
A	ORIGINAL DRAFT	10/06/03	JRK	28F0121-1SR-10-1-G		1 OF 2	
REV	DESCRIPTION	DATE	INT				

SCALE DRAWING 1:1



RoHS



ELECTRICAL TESTING

TEST:	GROSS	GROSS
# TURNS	1	1
AWG	22	22
FREQUENCY	25 MHz	100 MHz
NOMINAL	67 Ω	96 Ω
MINIMUM	- Ω	72 Ω
MAXIMUM	- Ω	120 Ω
WEIGHT/K	0.297 kgs.	0.66 Lbs.

DIMENSIONS:

A	3.05 [.120]	±	0.08 [.003]
B	2.54 [.100]	±	0.08 [.003]
B ₁	3.05 [.120]	±	MAX
C	8.51 [.335]	±	0.23 [.009]
C ₁	9.53 [.375]	±	MAX

WIRE DIMENSIONS:

T ₁	1.27 [.050]	±	REF.
T ₂	1.52 [.060]	±	0.51 [.020]
T ₃	0.20 [.008]	±	REF.
T ₄	5.97 [.235]	±	TYP.
T ₅	0.89 [.035]	±	0.25 [.010]
T ₆	0.43 [.017]	±	MAX

NOTES: UNLESS OTHERWISE SPECIFIED

1. WIRE: FLAT, OXYGEN FREE COPPER 1.27 X 0.20 [.050 X .008] PLATED 100% TIN OVER NICKEL. TIN THICKNESS: 0.005 [.0002], NICKEL THICKNESS: 0.0002 [.00008].
2. IMPEDANCE VALUES ARE GROSS, MEASURED USING WS50x8 WIRE w/ NO D.C. BIAS.
3. REFERENCE STEWARD WIRE PURCHASE SPEC. WS50x8-*
4. *ON = PARYLENE COATED (.00025" TH).
5. REFERENCE STEWARD CORE P/N 28H0121-*00.

DIMENSIONS ARE IN mm [INCHES].				This print is the property of Laird Tech. and is loaned in confidence subject to return upon request and with the understanding that no copies shall be made without the written consent of Laird Tech. All rights to design or invention are reserved.				
G	UPDATE LOGO	04/23/15	QIU	PROJECT/PART NUMBER: 28F0121-1SR-10		REV	PART TYPE:	DRAWN BY:
F	UPDATE COMPANY LOGO	10/24/08	JRK			G	ASSEMBLY	JRK
E	UPDATE LANDPATTERN ADD ROHS SYMBOL	08/09/07	JRK			SCALE:	SHEET:	
D	UPDATE COMPANY LOGO	04/19/07	JRK			10 : 1	2 OF 2	
C	ADD KGS TO WGT&LBS TO PART WGT	09/13/05	JRK			TOOL #	H0121	
B	CHANGE RATED CURRENT FROM 5000mA	02/17/04	JRK	DATE:	10/06/03			
A	ORIGINAL DRAFT	10/06/03	JRK	CAD #	28F0121-1SR-10-2-G			
REV	DESCRIPTION	DATE	INT					