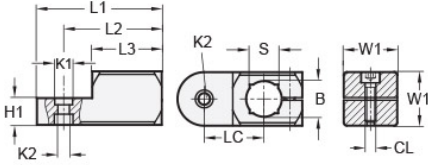




## MT16-CCSWV-25-A

Ruland Swivel Clamp Joint, Swivel Thru Hole 6.5mm, Clamp Width 25mm, Thru Hole 16mm, Clamp Screw M6, L 62mm, Aluminum



### Description

Ruland MT16-CCSWV-25-A is a swivel clamp joint with a thru hole for 16mm round tube, M6 clamp screw, 12.5mm base height, 25mm width and height, and 62mm overall length. It is designed to fit with MT15:16 swivel clamp bases, MT16 clamp connectors and mounting blocks, and MT16 round tubes. When combined with a swivel bases or attachment clamp joints, it is an ideal articulating mounting solution for screens, sensors, reflectors, plexiglass machine guards, and other components that require frequent adjustments. The vertical bore is parallel to the swivel axis. An MT15:16-SWALK-M6-25 adjustable clamping handle can be used to join it to other Ruland swivel components or tubes for rapid repositioning without the use of tools. This part is aluminum with a matte tumbled finish for use in most industrial environments. MT16-CCSWV-25-A is manufactured by Otto Ganter, inventoried by Ruland, and RoHS3 compliant.

### Product Specifications

|                           |                       |                                  |              |
|---------------------------|-----------------------|----------------------------------|--------------|
| Thru Hole Diameter B      | 16 mm                 | Thru Hole Tolerance              | +0.11/-0 mm  |
| Counterbore 1 Diameter K1 | 10 mm                 | Counterbore 2 Diameter K2        | 6.5 mm       |
| Clamp Screw CL            | M6                    | Overall Length L1                | 62 mm        |
| Hub Length LH             | 36 mm                 | Edge To Center Of Counterbore L2 | 49.5 mm      |
| Center To Center LC       | 29 mm                 | Width & Height W1                | 25 mm        |
| Base Height H1            | 12.5 mm               | Material Specification           | Aluminum     |
| Manufacturer              | JW Winco/ Otto Ganter | Country of Origin                | Germany      |
| Weight (lbs)              | 0.139100              | UPC                              | 634529230497 |
| Tariff Code               | 7609.00.0000          | UNSPC                            | 31162908     |

**Note 1** Performance ratings are for guidance only. The user must determine suitability for a particular application.

**Prop 65**  **WARNING** This product can expose you to the chemical Nickel (metallic), known to the State of California to cause cancer. For more information go to [www.P65Warnings.ca.gov](http://www.P65Warnings.ca.gov).