



Insulated cross-connector, No. of poles: 4, Mounting type: Plug in, Width: 30.5 mm, Rated cross-section: 6 mm², Colour: Yellow

RAL: 1026

Business data

Article number	17223.8
Article name	SQI 6/4 YE
GTIN (EAN)	4044211148768
Packaging unit	20
Quantity unit	PC
Weight per piece (not including packaging)	4.4 g
Weight per piece (including packaging)	4.47 g
Unit of weight	G
Customs number	85389099
Country of origin	DE
Prio-Article	17223.8
Product description	Insulated cross-connector

Technical data

Dimensions

Length	4 mm
Width	30.5 mm
Height	23 mm
Pitch size	8 mm

Ratings

Voltage with partition, max.	1000 V
Voltage without partition, max.	1000 V
Rated current	41 A
Current load, max.	41 A
Rated cross-section	6 mm ²
Contamination degree	2

Connection data

No. of poles	4
--------------	---

Materials

Material	Copper alloy
Insulation housing	Polyamide 6.6
Flammability class UL 94	V-2
Working temperature, min.	-40 °C
Working temperature, max.	105 °C

Further technical data

Mounting type	Plug in
Insulation available	✓
Touch protection is available	✓
Number of bridged terminals	4

Environmental Product Compliance

REACH Conform	yes
REACH Candidate Substance Note	No
RoHS Conform	yes

Data sheet

17223.8 SQI 6/4 YE



Media

Accessories

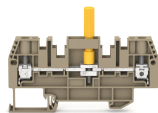
Insulation cap for cross-connector



Insulating cap, Colour: Yellow

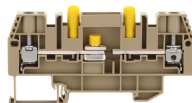
Article number	Article name	GTIN (EAN)	Packaging unit
<u>17200.8</u>	SQIK 2,5-10 YE	4044211148539	20

##INVERSE##CONTA-CONNECT



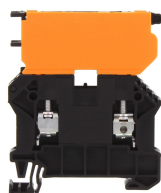
Test disconnect terminal, Screw connection, Mounting type: Mounting rail TS 35/7.5, Rated cross-section: 6 mm², Width: 8.1 mm, Colour: Beige

Article number	Article name	GTIN (EAN)	Packaging unit
<u>17523.2</u>	SPTK 6/LT/HB BG	4044211209223	50 ST



Test disconnect terminal, Screw connection, Mounting type: Mounting rail TS 35/7.5, Rated cross-section: 6 mm², Width: 8.1 mm, Colour: Beige

Article number	Article name	GTIN (EAN)	Packaging unit
<u>17524.2</u>	SPTK 6/LT/STBI/YE BG	4044211209919	50 ST



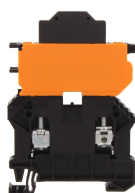
Fuse-disconnect terminal, Screw connection, Mounting type: Mounting rail TS 35/7.5, Rated cross-section: 6 mm², Width: 8.1 mm, Colour: Black

Article number	Article name	GTIN (EAN)	Packaging unit
<u>17151.4</u>	SSIK 6/2A BK	4044211188993	50 ST



Fuse-disconnect terminal, Screw connection, Mounting type: Mounting rail TS 35/7.5, Rated cross-section: 6 mm², Width: 8.1 mm, Colour: Black

Article number	Article name	GTIN (EAN)	Packaging unit
<u>17176.4</u>	SSIK 6/2A/LED 30-60V AC/DC BK	4044211188931	50 ST



Fuse-disconnect terminal, Screw connection, Mounting type: Mounting rail TS 35/7.5, Rated cross-section: 6 mm², Width: 8.1 mm, Colour: Black

Article number	Article name	GTIN (EAN)	Packaging unit
<u>17178.4</u>	SSIK 6/2A/LED 500V AC/DC BK	4044211188948	50 ST

##INVERSE##CONTA-CONNECT



Test disconnect terminal, Screw connection, Mounting type: Mounting rail TS 35/7.5, Rated cross-section: 6 mm², Width: 8.1 mm, Colour: Beige

Article number	Article name	GTIN (EAN)	Packaging unit
<u>17520.2</u>	SPTK 6/DU BG	4044211209650	50 ST



Test disconnect terminal, Screw connection, Mounting type: Mounting rail TS 35/7.5, Rated cross-section: 6 mm², Width: 8.1 mm, Colour: Beige

Article number	Article name	GTIN (EAN)	Packaging unit
<u>17521.2</u>	SPTK 6/LT BG	4044211209162	50 ST



Test disconnect terminal, Screw connection, Mounting type: Mounting rail TS 35/7.5, Rated cross-section: 6 mm², Width: 8.1 mm, Colour: Beige

Article number	Article name	GTIN (EAN)	Packaging unit
<u>17522.2</u>	SPTK 6/QT BG	4044211209216	50 ST



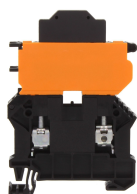
Test disconnect terminal, Screw connection, Mounting type: Mounting rail TS 35/7.5, Rated cross-section: 6 mm², Width: 8.1 mm, Colour: Beige

Article number	Article name	GTIN (EAN)	Packaging unit
<u>17525.2</u>	SPTK 6/LT/STBI/BU BG	4044211209926	50 ST



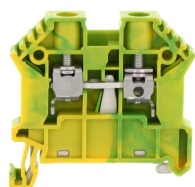
Fuse-disconnect terminal, Screw connection, Mounting type: Mounting rail TS 35/7.5, Rated cross-section: 6 mm², Width: 8.1 mm, Colour: Black

Article number	Article name	GTIN (EAN)	Packaging unit
<u>17175.4</u>	SSIK 6/2A/LED 12-30V AC/DC BK	4044211188924	50 ST



Fuse-disconnect terminal, Screw connection, Mounting type: Mounting rail TS 35/7.5, Rated cross-section: 6 mm², Width: 8.1 mm, Colour: Black

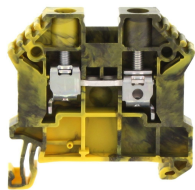
Article number	Article name	GTIN (EAN)	Packaging unit
<u>17177.4</u>	SSIK 6/2A/LED 110-250V AC/DC BK	4044211188955	50 ST



Protective earth terminal, Screw connection, Mounting type: Mounting rail TS 35/7.5, Rated cross-section: 10 mm², Width: 8 mm, Colour: Green-yellow

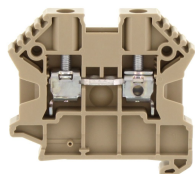
Article number	Article name	GTIN (EAN)	Packaging unit
<u>17111.2</u>	SSL 6/2A GNYE	4044211141769	100 ST

##INVERSE##CONTA-CONNECT



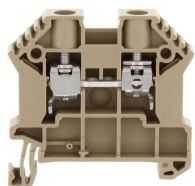
Feed-through terminal, Screw connection, Mounting type: Mounting rail TS 35/7.5, Rated cross-section: 10 mm², Width: 8 mm, Colour: Black-yellow

Article number	Article name	GTIN (EAN)	Packaging unit
<u>17132.2</u>	SRK 6/2A/PE BKYE	4044211200718	100 ST



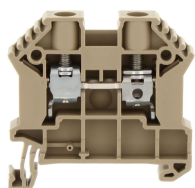
Feed-through terminal, Screw connection, Mounting type: Mounting rail TS 35/7.5, Rated cross-section: 10 mm², Width: 8 mm, Colour: Beige

Article number	Article name	GTIN (EAN)	Packaging unit
<u>17109.2</u>	SRK B 6/2A BG	4044211141745	100 ST



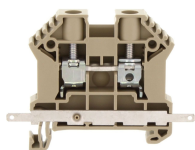
Feed-through terminal, Screw connection, Mounting type: Mounting rail TS 35/7.5, Rated cross-section: 10 mm², Width: 8 mm, Colour: Beige

Article number	Article name	GTIN (EAN)	Packaging unit
<u>17108.2</u>	SRK 6/2A BG	4044211141738	100



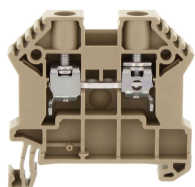
Feed-through terminal, Screw connection, Mounting type: Mounting rail TS 35/7.5, Rated cross-section: 10 mm², Width: 8 mm, Colour: Beige

Article number	Article name	GTIN (EAN)	Packaging unit
<u>17110.2</u>	SRK 6/2A/Z BG	4044211141752	100 ST



Feed-through terminal, Screw connection, Mounting type: Mounting rail TS 35/7.5, Rated cross-section: 10 mm², Width: 8 mm, Colour: Beige

Article number	Article name	GTIN (EAN)	Packaging unit
<u>17117.2</u>	SRK 6/2A SAS BG	4044211149000	80



Feed-through terminal, Screw connection, Mounting type: Mounting rail TS 35/7.5, Rated cross-section: 10 mm², Width: 8 mm, Colour: Beige

Article number	Article name	GTIN (EAN)	Packaging unit
<u>87805.2</u>	SRK 6/2A Ex BG	4044211199777	100

##INVERSE##CONTA-CONNECT



Test disconnect terminal, Screw connection, Mounting type: Mounting rail TS 35/7.5,
Rated cross-section: 6 mm², Width: 8.1 mm, Colour: Beige

Article number	Article name	GTIN (EAN)	Packaging unit
<u>17521.2</u>	SPTK 6/LT BG	4044211209162	50 ST