

- 1
- 2
- 3
- 4
- 5
- 6
- 7
- 8
- 9
- 10
- 11
- 13
- 14
- 15
- 16
- 17
- 18

MATERIAL

Glass-fibre reinforced polyamide based (PA) technopolymer, black colour, matte finish.

AJUSTABLE PIN WITH OCTAGONAL SLOT

Acetal based (POM) technopolymer, black colour.

SCREW-COVERS

Polyester based (PBT) technopolymer, black colour, glossy finish, snap-in assembly.

COVERS FOR PIN SLOT

Technopolymer, black colour, matte finish; to be fitted after assembly.

HINGE ASSEMBLY ON FRAME AND DOOR

Pass-through holes for hexagonal head screws, cylindrical head screws with hexagon socket or M5 hexagonal nuts (UNI 5588).

FEATURES AND APPLICATIONS

CFO, offset lift-off hinges (ELESA patent) have been designed to adjust possible misalignments between the door and the frame.

They can be mounted on doors which open on the right or on the left side. Each body of the hinge has a slot for fitting the pin: the opposite side can be closed with the supplied cover.

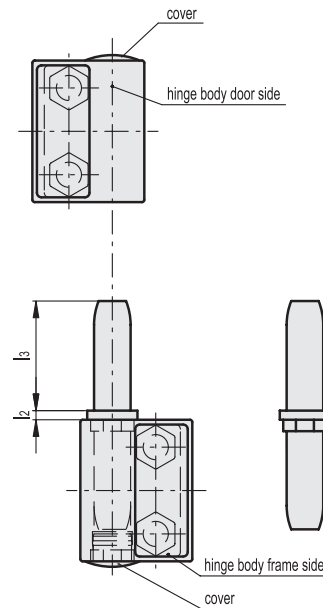
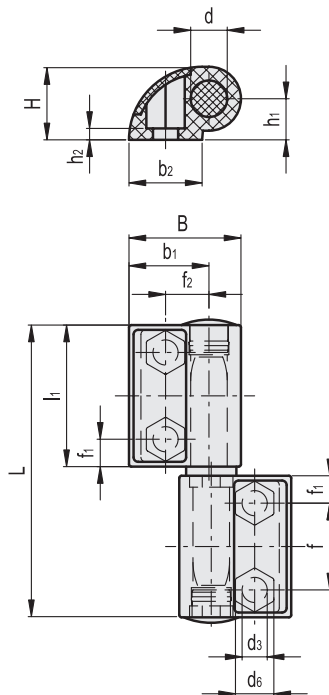
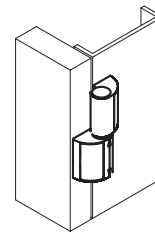
SPECIAL EXECUTIONS ON REQUEST

Screw-covers in different RAL colours.

To choose the convenient type and the right number of hinges for your application, see the Guidelines (see page 1448).



FAM design



Conversion Table 1 mm = 0.039 inch			
L		d6	
mm	inch	mm	inch
64	2.52	8.5	0.33

METRIC

Code	Description	L	B	f	f1	f2	H	h1	h2	l1	l2	l3	b1	b2	d	d3	d6	C# [Nm]	⚖
426211-C9	CFO.65 EH-5-C9	64	24.5	19	6	9.5	16	9	2.5	31	2	24	17.5	16	8	5.5	8.5	5	25

