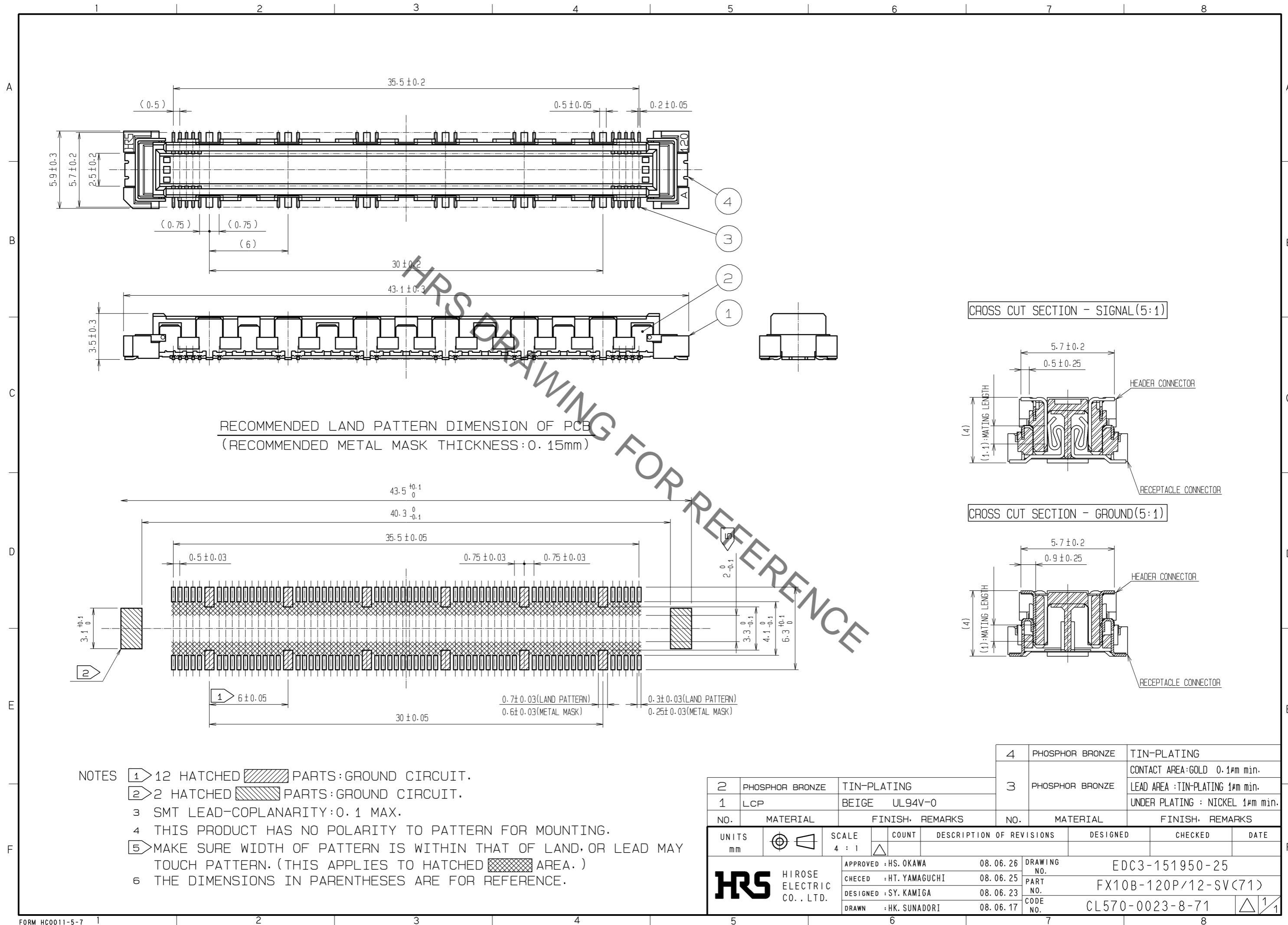


May.1.2023 Copyright 2023 HIROSE ELECTRIC CO., LTD. All Rights Reserved.
In case of consideration for using Automotive equipment / device which demand high reliability, kindly contact our sales window correspondents.



- NOTES
- ① 12 HATCHED PARTS: GROUND CIRCUIT.
 - ② 2 HATCHED PARTS: GROUND CIRCUIT.
 - 3 SMT LEAD-COPLANARITY: 0.1 MAX.
 - 4 THIS PRODUCT HAS NO POLARITY TO PATTERN FOR MOUNTING.
 - ⑤ MAKE SURE WIDTH OF PATTERN IS WITHIN THAT OF LAND, OR LEAD MAY TOUCH PATTERN. (THIS APPLIES TO HATCHED AREA.)
 - 6 THE DIMENSIONS IN PARENTHESES ARE FOR REFERENCE.

| 2 | PHOSPHOR BRONZE | TIN-PLATING | 4 | PHOSPHOR BRONZE | TIN-PLATING | | | | | |
|---------------------------|-----------------|---------------|---------|------------------------|--|----------|----------------------|----------------|---------|------|
| 1 | LCP | BEIGE UL94V-0 | 3 | PHOSPHOR BRONZE | CONTACT AREA: GOLD 0.1μm min. LEAD AREA: TIN-PLATING 1μm min. UNDER PLATING: NICKEL 1μm min. | | | | | |
| NO. | MATERIAL | FINISH | REMARKS | NO. | MATERIAL | FINISH | REMARKS | | | |
| UNITS | | | SCALE | COUNT | DESCRIPTION OF REVISIONS | | | DESIGNED | CHECKED | DATE |
| mm | | | 4 : 1 | △ | APPROVED : HS. OKAWA | 08.06.26 | DRAWING NO. | EDC3-151950-25 | | |
| HIROSE ELECTRIC CO., LTD. | | | | CHECED : HT. YAMAGUCHI | 08.06.25 | PART NO. | FX10B-120P/12-SV(71) | | | |
| | | | | DESIGNED : SY. KAMIGA | 08.06.23 | CODE NO. | CL570-0023-8-71 | | | |
| | | | | DRAWN : HK. SUNADORI | 08.06.17 | | | | | |