

THIS DRAWING IS UNPUBLISHED. RELEASED FOR PUBLICATION
 © COPYRIGHT - By -TE CONNECTIVITY ALL RIGHTS RESERVED.

LOC	DIST	REVISIONS				
P	LTR	DESCRIPTION	DATE	DWN	APVD	
HB	-	E	UNIFY THE GROOVE OF GLUE ECO-15-012528	21Aug2012	YS.H	CSM
		E1	ADD NEW PN ECN-21-119634	29-SEP-2021	G.R	K.T

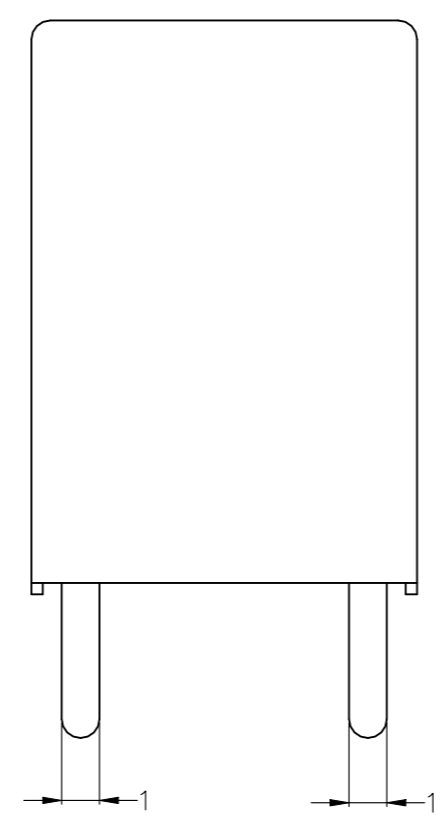
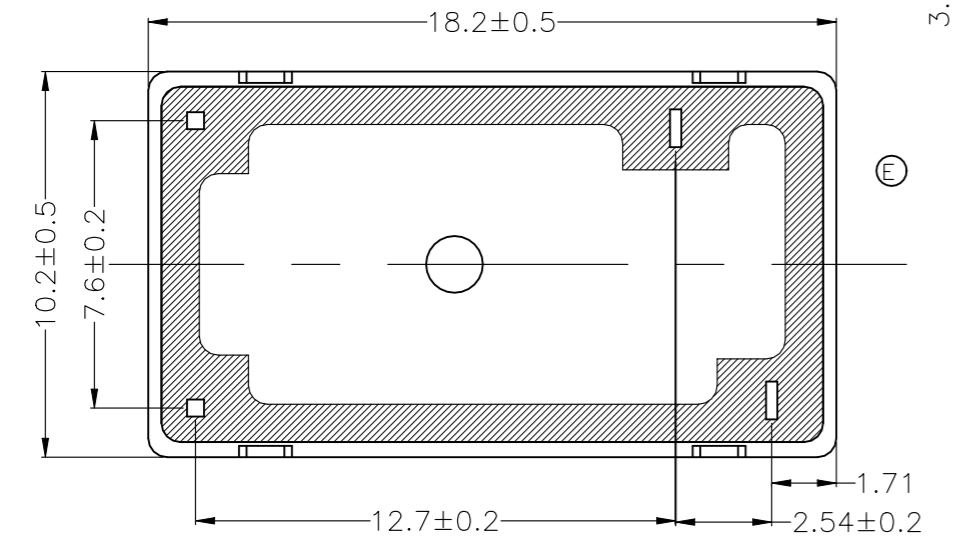
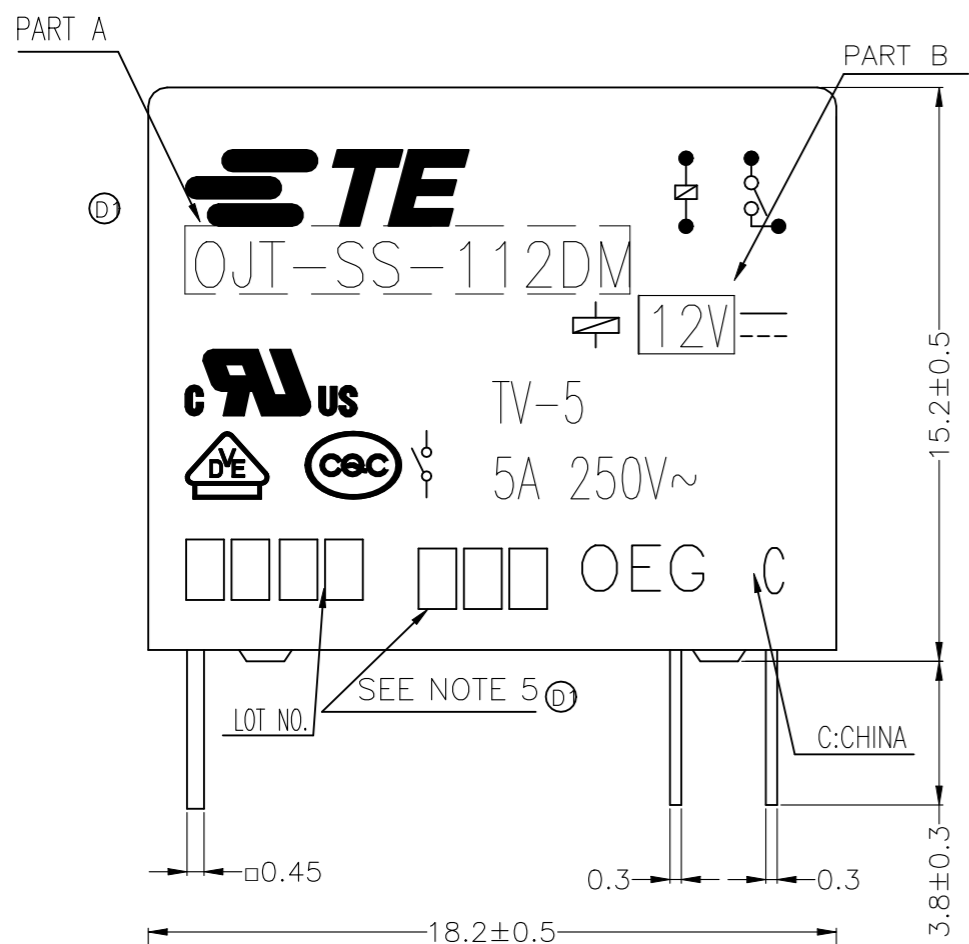
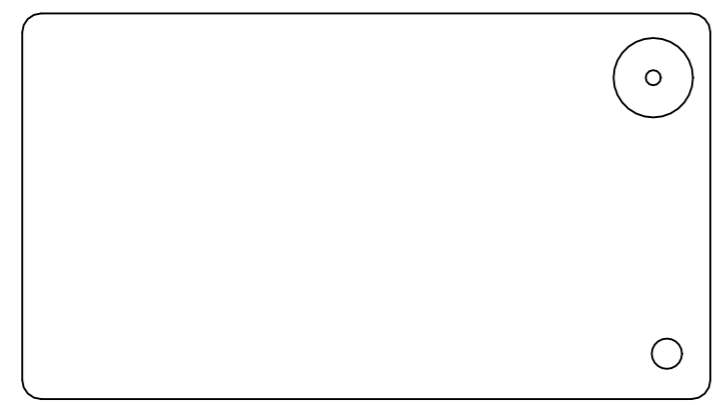
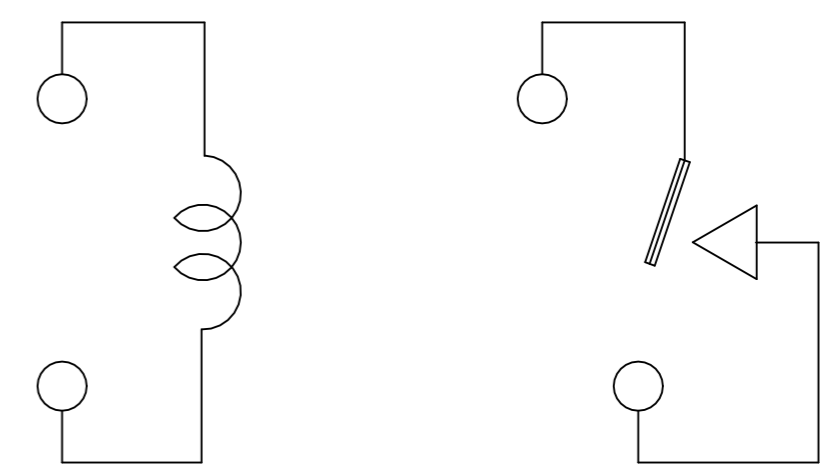


Diagram dimension	Tolerance
0.99mm max.	±0.1mm
1 - 2.99mm	±0.2mm
3mm min.	±0.3mm



CONNECTION FIGURE

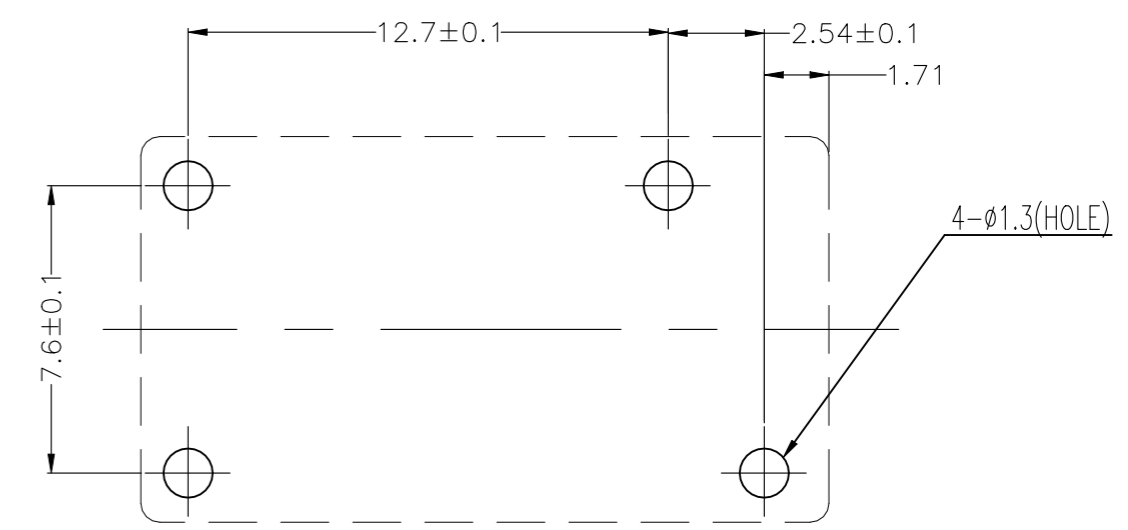


FIGURE FOR PRINTED CIRCUIT BOARD PROCESSING (BOTTOM VIEW)

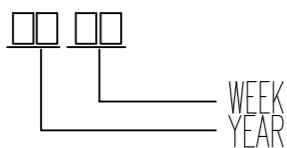
THIS DRAWING IS A CONTROLLED DOCUMENT.		DWN	Fu,Bo		TE Connectivity OJT-S*-1**DM,000 CUSTOMER DRAWING
DIMENSIONS: mm		CHK	Zhang,XN		
TOLERANCES UNLESS OTHERWISE SPECIFIED:		APVD	Yang,Wen		
0 PLC ± - 1 PLC ± - 2 PLC ± - 3 PLC ± - 4 PLC ± - ANGLES ± - MATERIAL FINISH		PRODUCT SPEC	SEE SPEC TABLE		
		APPLICATION SPEC			NAME
		SIZE	CAGE CODE	DRAWING NO	RESTRICTED TO
		WEIGHT	A3 00779 C-1461116		
CUSTOMER DRAWING		SCALE	5:1		SHEET 1 OF 2
		REV	E1		

THIS DRAWING IS UNPUBLISHED. RELEASED FOR PUBLICATION
 © COPYRIGHT - By -TE CONNECTIVITY ALL RIGHTS RESERVED.

LOC	DIST	REVISIONS			
P	LTR	DESCRIPTION	DATE	DWN	APVD
HB	-	SEE SHEET 1	-	-	-

TE PART NO	TE TYPE NAME	PART B	PART A	TYPE
1-1461116-8	OJT-SH-124DM,000TO	24V	OJT-SH-124DM	r
1-1461116-7	OJT-SS-112DM,000GO	12V	OJT-SS-112DM	q
1-1461116-6	OJT-SH-148DM	48V	OJT-SH-148DM	p
1-1461116-5	OJT-SH-124DM	24V	OJT-SH-124DM	o
1-1461116-4	OJT-SH-118DM	18V	OJT-SH-118DM	n
1461116-1	OJT-SH-112DM	12V	OJT-SH-112DM	m
1-1461116-2	OJT-SH-109DM	9V	OJT-SH-109DM	l
1-1461116-1	OJT-SH-106DM	6V	OJT-SH-106DM	k
1-1461116-0	OJT-SH-105DM	5V	OJT-SH-105DM	j
1461116-9	OJT-SH-103DM	3V	OJT-SH-103DM	i
1461116-8	OJT-SS-148DM	48V	OJT-SS-148DM	h
1461116-7	OJT-SS-124DM	24V	OJT-SS-124DM	g
1461116-6	OJT-SS-118DM	18V	OJT-SS-118DM	f
1-1461116-3	OJT-SS-112DM	12V	OJT-SS-112DM	e
1461116-5	OJT-SS-109DM	9V	OJT-SS-109DM	d
1461116-4	OJT-SS-106DM	6V	OJT-SS-106DM	c
1461116-3	OJT-SS-105DM	5V	OJT-SS-105DM	b
1461116-2	OJT-SS-103DM	3V	OJT-SS-103DM	a

ⓓ1 NOTES:
 1.LOT NO. SYSTEM AS FOLLOWING:



- ⓓ2.TERMINAL DIMENSION IS BEFORE SOLDER DIP;
- ⓓ3.FOR THE TIN-PLATING OF THE PINS:
 +0.1mm FOR WIDTH,THICKENSS AND DIAMETER.
 +0.5mm FOR LENGTH.
- ⓓ4.MARKING FROM INK TO LASER.

ⓓ5.ADD LOT NO. SYSTEM AS FOLLOWING;



- RELAY TYPE
- I, DIGITS FOR DAY OF THE WEEK
 1...MONDAY IN THIS WEEK;
 2...TUESDAY IN THIS WEEK;

 7...SUNDAY IN THIS WEEK
 - II, DIGITS FOR SHIFT OF THE DAY
 1...DAY SHIFT IN THIS DAY;
 2...NIGHT SHIFT IN THIS DAY;
 - III, ONE CHARACTER DISTINGUISH THE LINE IDENTITY, SUCH AS: A,B.....Z

		UV RESIN	SEAL (VENT HOLE)	16
		EPOXY RESIN	SEAL (BASE & BOBBIN)	15
		3UEW	MAGNETIC WIRE	14
94V-0		P.B.T	CASE	13
94V-0		P.B.T	BASE	12
94V-0		P.B.T	BOBBIN	11
	SOLDER DIP	C.P WIRE	COIL TERMINAL	10
94V-0		P.B.T	CARD	9
		Ag ALLOY	MOVABLE CONTACT	8
		Ag ALLOY	NO.CONTACT	7
		STEEL	HINGE SPRING	6
	SOLDER DIP	PBP	NO.TERMINAL	5
	SOLDER DIP	Cu ALLOY	MOVABLE SPRING	4
	Cu-Ni PLATED	STEEL	CORE	3
	Cu-Ni PLATED	STEEL	ARMATURE	2
	Cu-Ni PLATED	STEEL	YOKE	1
INCOMBUSTIBILITY	TREATMENT	MATERIAL	DESCRIPTION	ITEM

THIS DRAWING IS A CONTROLLED DOCUMENT.		DWN	Fu,Bo		TE Connectivity OJT-S*-1**DM,000 CUSTOMER DRAWING											
DIMENSIONS: mm		CHK	Zhang,XN													
TOLERANCES UNLESS OTHERWISE SPECIFIED:		APVD	Yang,Wen													
<table border="1"> <tr><td>0 PLC</td><td>± -</td></tr> <tr><td>1 PLC</td><td>± -</td></tr> <tr><td>2 PLC</td><td>± -</td></tr> <tr><td>3 PLC</td><td>± -</td></tr> <tr><td>4 PLC</td><td>± -</td></tr> <tr><td>ANGLES</td><td>± -</td></tr> </table>		0 PLC	± -	1 PLC		± -	2 PLC	± -	3 PLC	± -	4 PLC	± -	ANGLES	± -	PRODUCT SPEC	SEE SPEC TABLE
0 PLC	± -															
1 PLC	± -															
2 PLC	± -															
3 PLC	± -															
4 PLC	± -															
ANGLES	± -															
MATERIAL	FINISH	APPLICATION SPEC	-		SIZE	CAGE CODE	DRAWING NO	RESTRICTED TO								
-	-	WEIGHT	-		A3	00779	C-1461116	-								
CUSTOMER DRAWING					SCALE	5:1	SHEET	2 OF 2								
					REV	E1										