



Electrical specifications

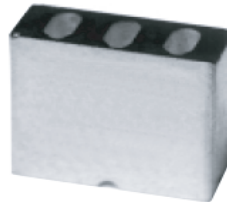
Center Frequency: 836.5 MHz
Bandwidth: 25 MHz
Input / Output Impedance: 50 Ohms
Passband: 824-849 MHz
Passband Insertion Loss: 824-849 MHz 3.8 dB
Passband Ripple: 1.0 dB max
Passband Return Loss: 824-849 MHz 8.5 dB min
Rejection: 804 MHz 11.5 dB min
Rejection 2: 869 MHz 22.5 dB min
Power Handling: 1 W

Mechanical

Mounting Method: SMT
Dimensions: 11.8 x 10.7 x 4.5 mm

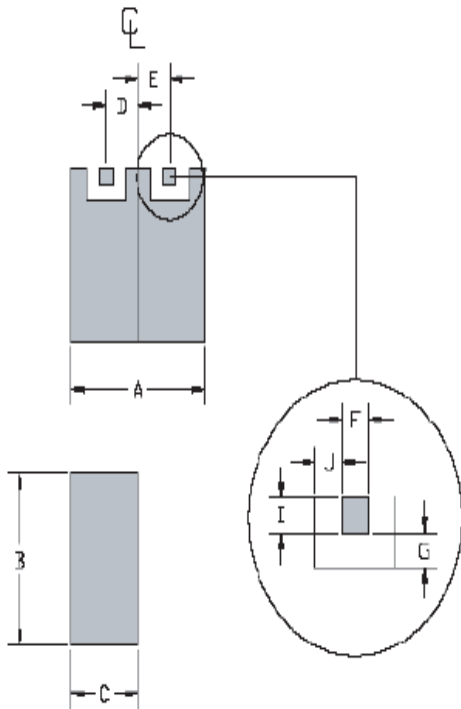
Environmental

Operating Temperature: -30°C to +70°C
Storage Temperature: -50°C to +90°C



This product is RoHs compliant.

Mechanical Drawing:



Dim	Nominal (mm)	Tolerance (mm) +/- or max
A	11.8	max
B	10.7	max
C	4.5	max
D	3.31	0.127
E	3.31	0.127
F	1.3	0.127
G	0.77	0.127
H		
I	1.8	0.127
J	0.77	0.127



ANATECH ELECTRONICS INC
RF & Microwave Filters & Products

GSM/Cellular TX Filter

Part Number: AM836B275



Response Plot:

