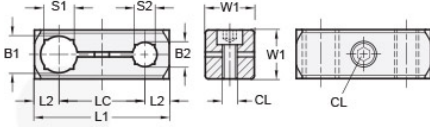




MT16/16-CC2WP-A

Ruland Two-Way Connector Clamp, Thru Holes 16mmx16mm, L 55mm, Aluminum



Description

Ruland MT16/16-CC2WP-A a two-way connector clamp with parallel thru holes for 16mm round tubes, M6 clamp screws, 20mm width/height, and 55mm overall length. It is designed to fit on Ruland tubes and flange bolt bases that begin with MTXX. MT16/16-CC2WP-A is aluminum and screws are 304 stainless steel for use in most industrial applications. This two-way connector clamp is commonly used to support tubes for mounting sensors, screens, reflectors, plexiglass machine guards, and other industrial components. The parallel thru holes make MT16/16-CC2WP-A an ideal connector clamp for compact mounting systems such as those found on small conveyors. MT15:16:20-ALK-M6-25 adjustable clamping handles can be used in place of standard hardware allowing for rapid repositioning of tubes or the connector without the need for tools. MT16/16-CC2WP-A is manufactured by Otto Ganter, inventoried by Ruland, and RoHS3 compliant.

Product Specifications

| | | | |
|--------------------------------|--|--------------------------------|-----------------------|
| Thru Hole 1 Diameter B1 | 16 mm | Thru Hole 2 Diameter B2 | 16 mm |
| Thru Hole Tolerance | +0.11/-0 mm | Thru Hole 2 Tolerance | +0.11/-0 mm |
| Overall Length L1 | 55 mm | Edge To Center L2 | 10 mm |
| Center To Center LC | 35 mm | Width & Height W1 | 20 mm |
| Clamp Screw CL | M6 | Weight (lbs) | 0.089900 |
| Material Specification | Aluminum | Manufacturer | JW Winco/ Otto Ganter |
| UPC | 634529231654 | Country of Origin | Germany |
| Tariff Code | 7609.00.0000 | | |
| Note 1 | Performance ratings are for guidance only. The user must determine suitability for a particular application. | | |
| Prop 65 | ⚠WARNING This product can expose you to the chemical Nickel (metallic), known to the State of California to cause cancer. For more information go to www.P65Warnings.ca.gov . | | |