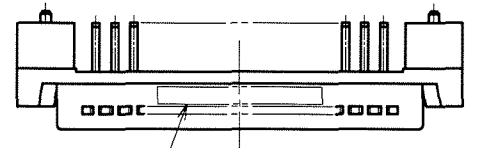
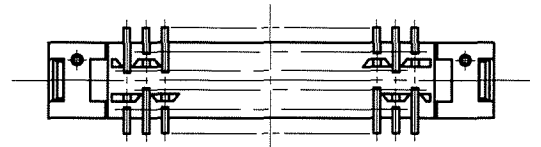
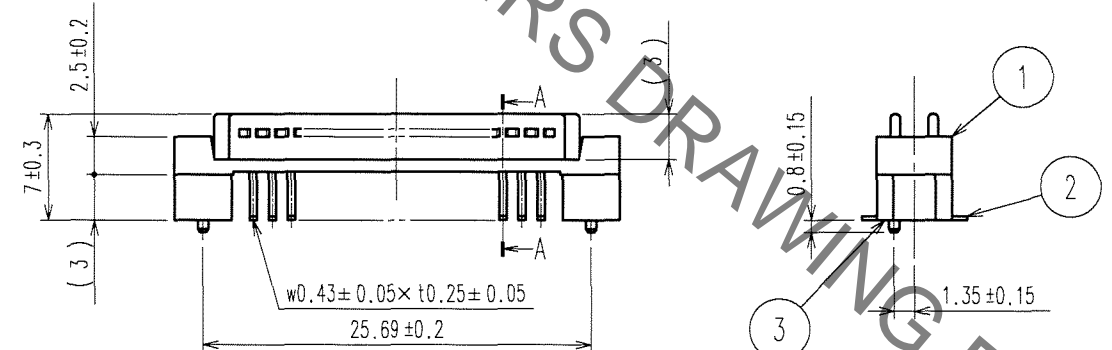
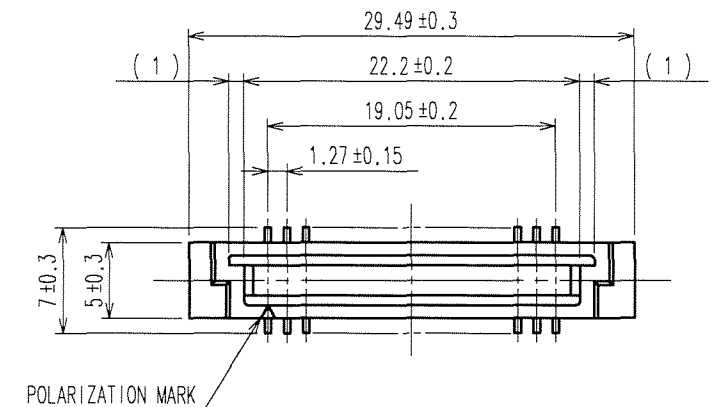
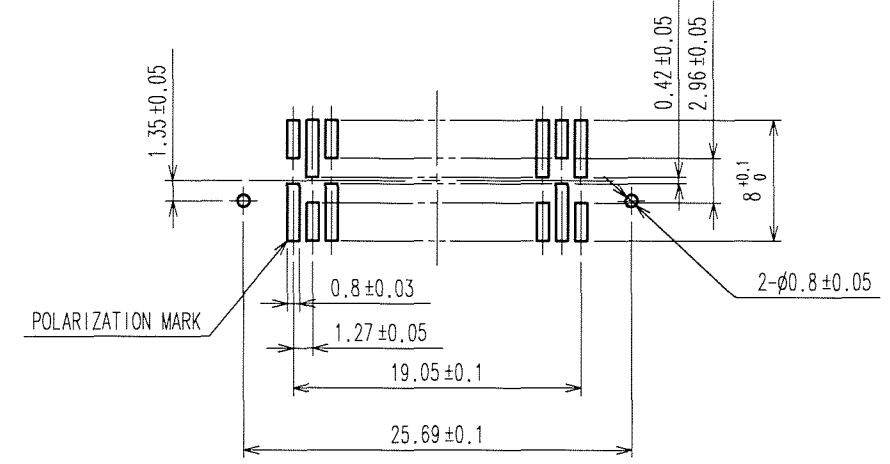


May.1.2023 Copyright 2023 HIROSE ELECTRIC CO., LTD. All Rights Reserved.
In case of consideration for using Automotive equipment / device which demand high reliability, kindly contact our sales window correspondents.

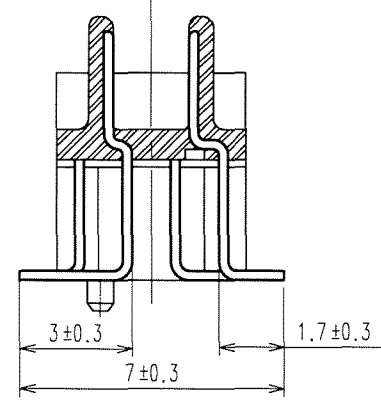
COUNT	DESCRIPTION OF REVISIONS	BY	CHKD	DATE	COUNT	DESCRIPTION OF REVISIONS	BY	CHKD	DATE
△					△				
△					△				
△					△				



RECOMMENDED P.C.B. LAND PATTERN
(MOUNT SIDE)



A-A (5:1)



- NOTES
- 1 LOT No. SHALL BE INDICATED AT OPPTIONAL POSITION.
 - 2 LEAD CO-PLANARITY SHALL BE 0.15mm MAX.
 - 3 THE DIMENSIONS IN PARENTHESES ARE FOR REFERENCE.

TO
PCK

1, 3	POLYAMIDE	BEIGE	UL94V-0	2	PHOSPHOR BRONZE	CONTACT AREA: GOLD 0.2μ m min. LEAD AREA: TIN-PLATING 1.2μ m min. UNDER PLATING: NICKEL 1μ m min.
NO.	MATERIAL	FINISH, REMARKS		NO.	MATERIAL	FINISH, REMARKS
CODE NO. (OLD) CL			DRAWN A. SUZUKAWA 06.07.10	DESIGNED K. Nakamura 06.07.10	CHECKED C. Ueyama 06.07.10	APPROVED H. Ohawa 06.07.10
DRAWING NO. EDC3-084004-21			PART NO. FX4B3-32P-1.27SV(71)			
UNITS mm			CODE NO. CL574-0232-3-71			1/1

