

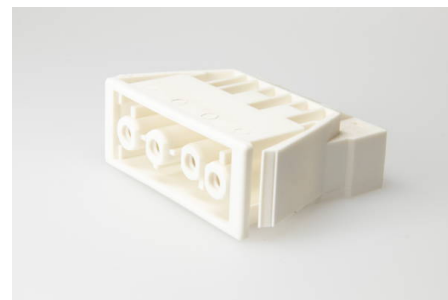


## Building Installation Connector System AC 166®

### G Panel Mounting

## AC 166 GEBU/ 4 WS

panel mount socket, 4 pole, white, coding: 1 (mains), wall thickness min.: 0.5 mm, wall thickness max.: 1.2 mm, voltage rating: 400 V, current rating: 20 A, cross-section rating: 2.5 mm<sup>2</sup>, connection type: screwless



### Order Info

<b>reference number (ref.no.)</b>	168854
<b>PU</b>	150
<b>EAN</b>	4028012107551

### Type

<b>type</b>	panel mount socket
<b>number of poles</b>	4 pole
<b>clamping units per pole</b>	2
<b>colour</b>	white
<b>coding</b>	1 (mains)
<b>cross-section rating</b>	2.5 mm <sup>2</sup>
<b>connection type</b>	screwless
<b>PE function</b>	yes
<b>protection against incorrect plugging</b>	yes

### Technical Data

<b>voltage rating</b>	400 V
<b>current rating</b>	20 A
<b>impulse voltage rating</b>	4.0 kV
<b>insulating material</b>	PA
<b>contact material</b>	Spring Steel, Brass
<b>core cross-section min.</b>	0.5 mm <sup>2</sup>
<b>core cross-section max.</b>	2.5 mm <sup>2</sup>
<b>flammability rating</b>	V-2
<b>max. ambient temperature operation</b>	70 °C
<b>IP code</b>	IP20
<b>IP code when plugged</b>	IP40
<b>type of conductor solid</b>	yes
<b>stripping length</b>	8.0-9.0 mm

<b>wall thickness min.</b>	0.5 mm
<b>wall thickness max.</b>	1.2 mm
<b>fixing</b>	catch wing

## Approvals

<b>acc. to EN 61535</b>	<a href="#">Download PDF</a>
<b>acc. to UL</b>	<a href="#">Download PDF</a>
<b>acc. to CSA</b>	<a href="#">Download PDF</a>

## Accessories

<b>AC 166 VSE SW</b>	169463
<b>AC 166 VSE WS</b>	169453