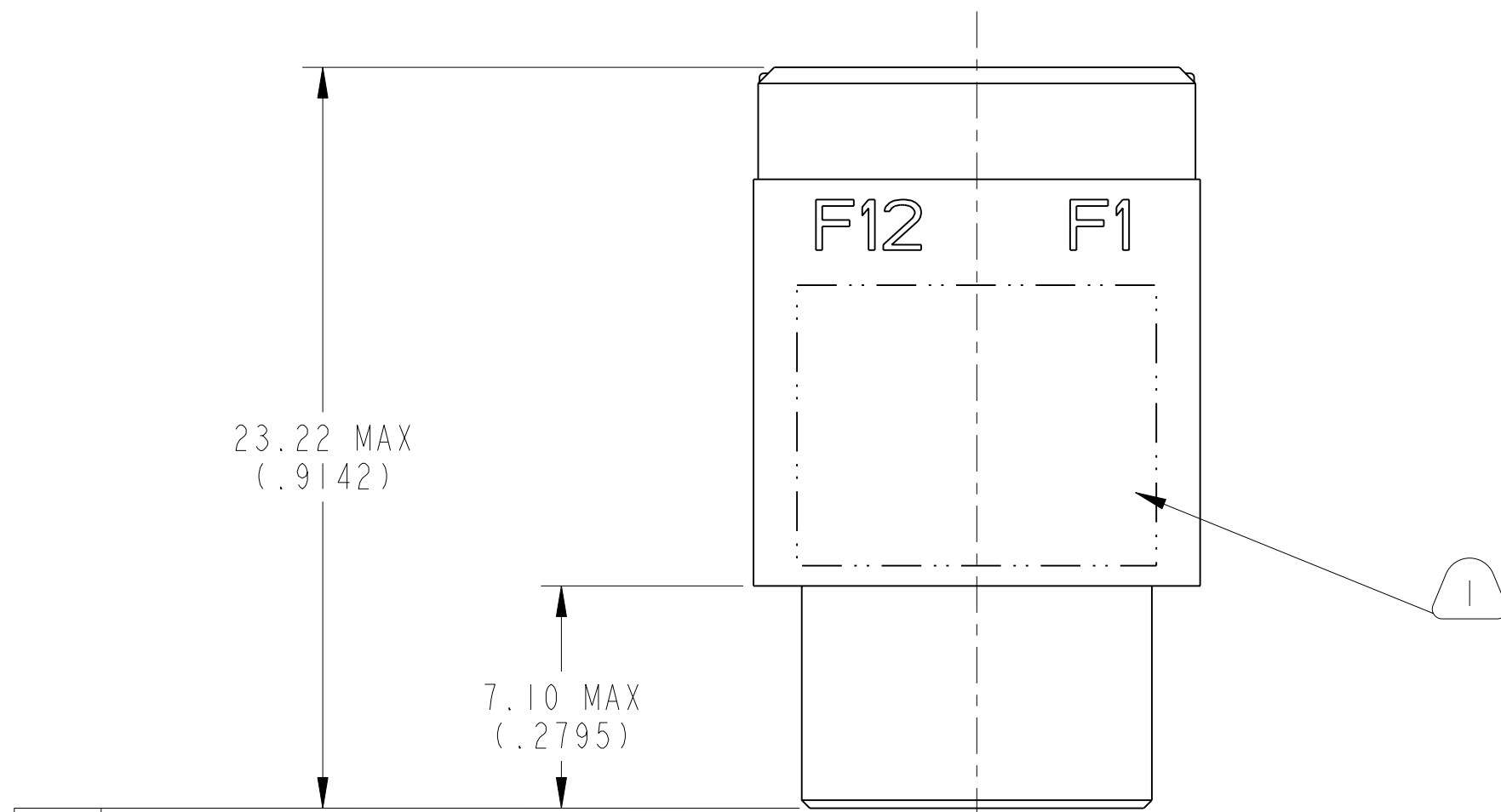


REV. A	SHEET 1 OF 3	DOCUMENT NO. 10-504637-009
M REVISIONS		
LTR	DESCRIPTION	DATE
A	PRODUCTION RELEASE	6/18/18

DOCUMENT NO. 10-504637-009

SHEET 1 OF 3

REV. A

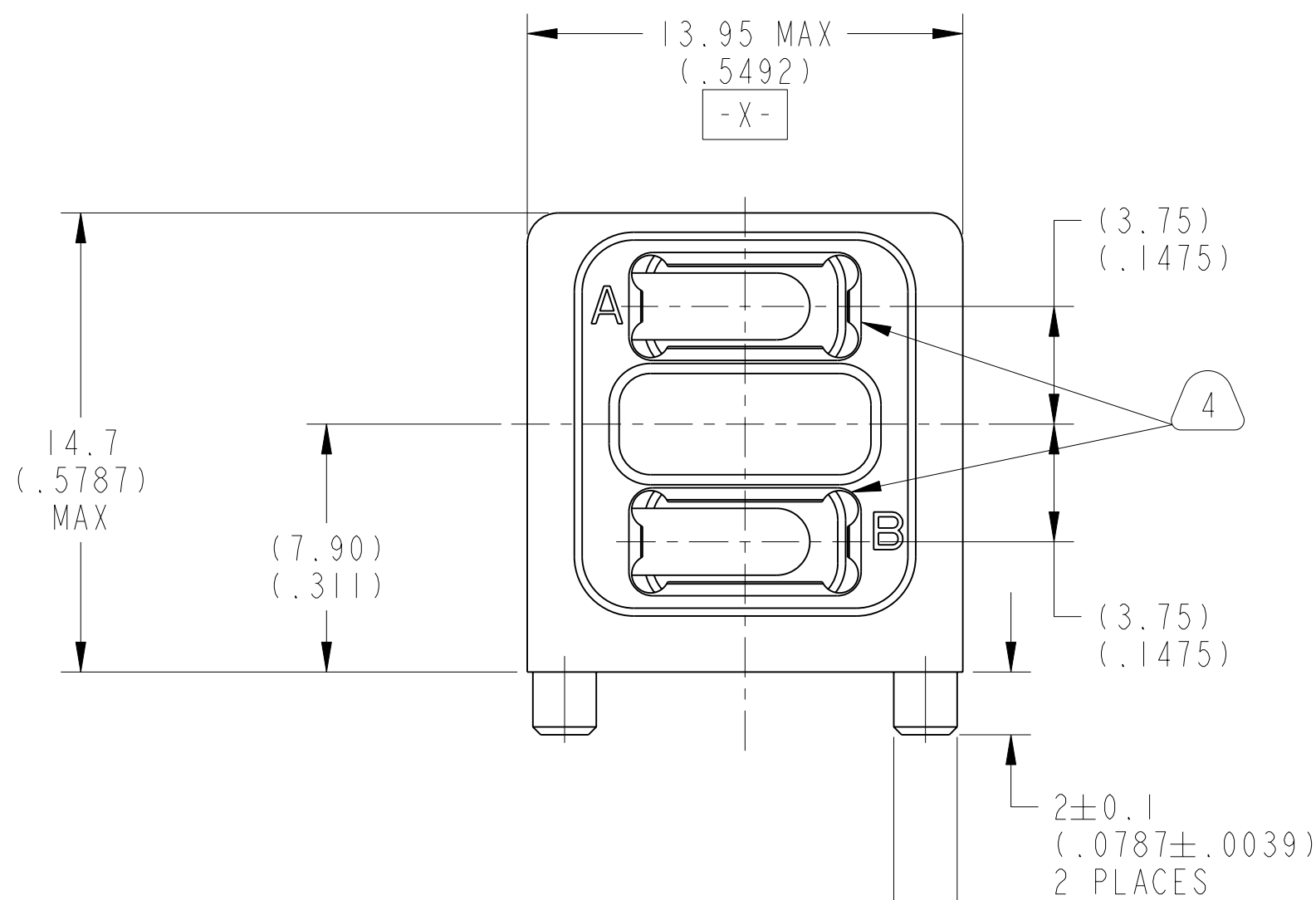


-Y-

23.22 MAX
(.9142)

7.10 MAX
(.2795)

F12 F1



13.95 MAX
(.5492)
-X-

14.7
(.5787)
MAX

7.90
(.311)

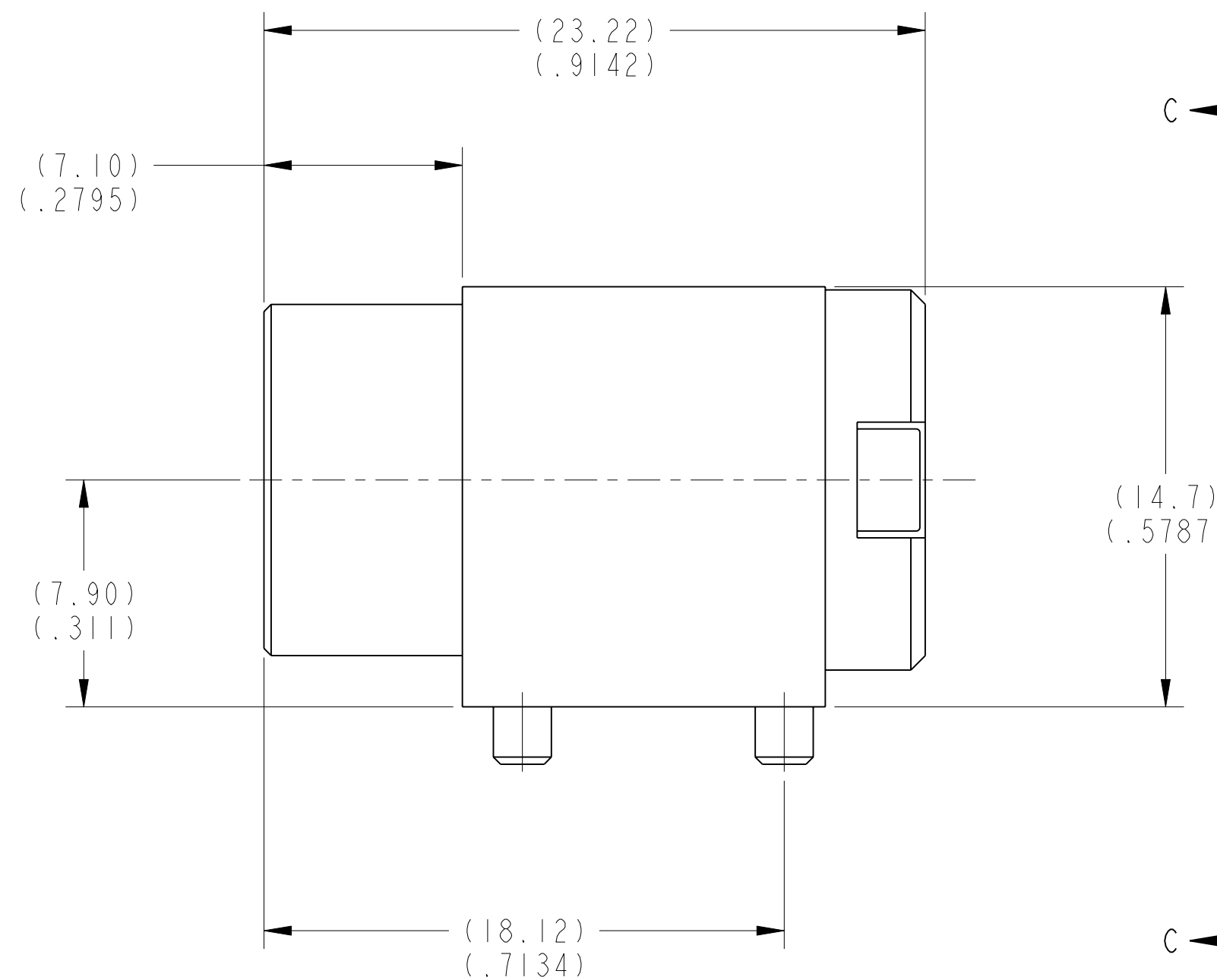
3.75
(.1475)

3.75
(.1475)

2 ± 0.1
(.0787 ± .0039)
2 PLACES

Ø 2.02 ± 0.03
(.0795 ± .0010)
2 PLACES

⊕ | Ø 0.05 (.002) | M | Y | Z | X | S



23.22
(.9142)

7.10
(.2795)

14.7
(.5787)

7.90
(.311)

18.12
(.7134)

METRIC DRAWING

SEE SHEET 2

NOTES:

THE USE OF THIS DOCUMENT IS UNLIMITED. HOWEVER, DOCUMENTS REFERENCED HEREON MAY CONTAIN LIMITED RIGHTS DATA.

SCALE 5.000

NONE	PRO/ENGINEER INFORMATION
NEXT ASSEMBLY	Pro/e Model Used: 10-504637-009.DWG.ASSEM Drawing Name: 10-504637-009

UNLESS OTHERWISE SPECIFIED	SPECIFICATIONS	POS	QTY	PART NUMBER	DESCRIPTION	NOTE
LINEAR DIMENSIONS ARE IN MILLIMETERS TOLERANCES: .XXXX = ±.NA ANGLES= ±2° .XXX = ±NA .XX = ±.13 .X = ±.25 DIM. & TOL. PER ASME Y14.5M; DRM PER MIL-DTL-31000; OTHER Amphenol Sids. PER 9-3800 LEGENDS: =FLAG NOTE CALL OUT REFERENCE ONLY	MATERIAL SPEC.	APPROVALS		DATE	PARTS LIST	
	NONE	PREPARED BY R. CHAPMAN			AMPHENOL CORPORATION 40-60 DELAWARE AVENUE SIDNEY, N.Y. 13838	
	PROCESS SPEC.	ENGINEER IN CHARGE E. HICKEY		22-Jun-17	CONNECTOR, FIBER OPTIC, MODULE, 2 MT SPECIAL (VITA 66.4 ENVELOPE)	
	9-3856-5 9-3895	DESIGN MANAGER R. SELFRIDGE		BLP	SIZE C	CAGE CODE 77820
		DESIGN ACTIVITY GROUP			DOCUMENT NO. 10-504637-009	REV. A
		THIRD ANGLE PROJECTION			SCALE: 3.0	REF: 10-504637-008
						SHEET 1 OF 3

FORMAT: C-U-L-REV.B

DOCUMENT NO. 10-504637-009

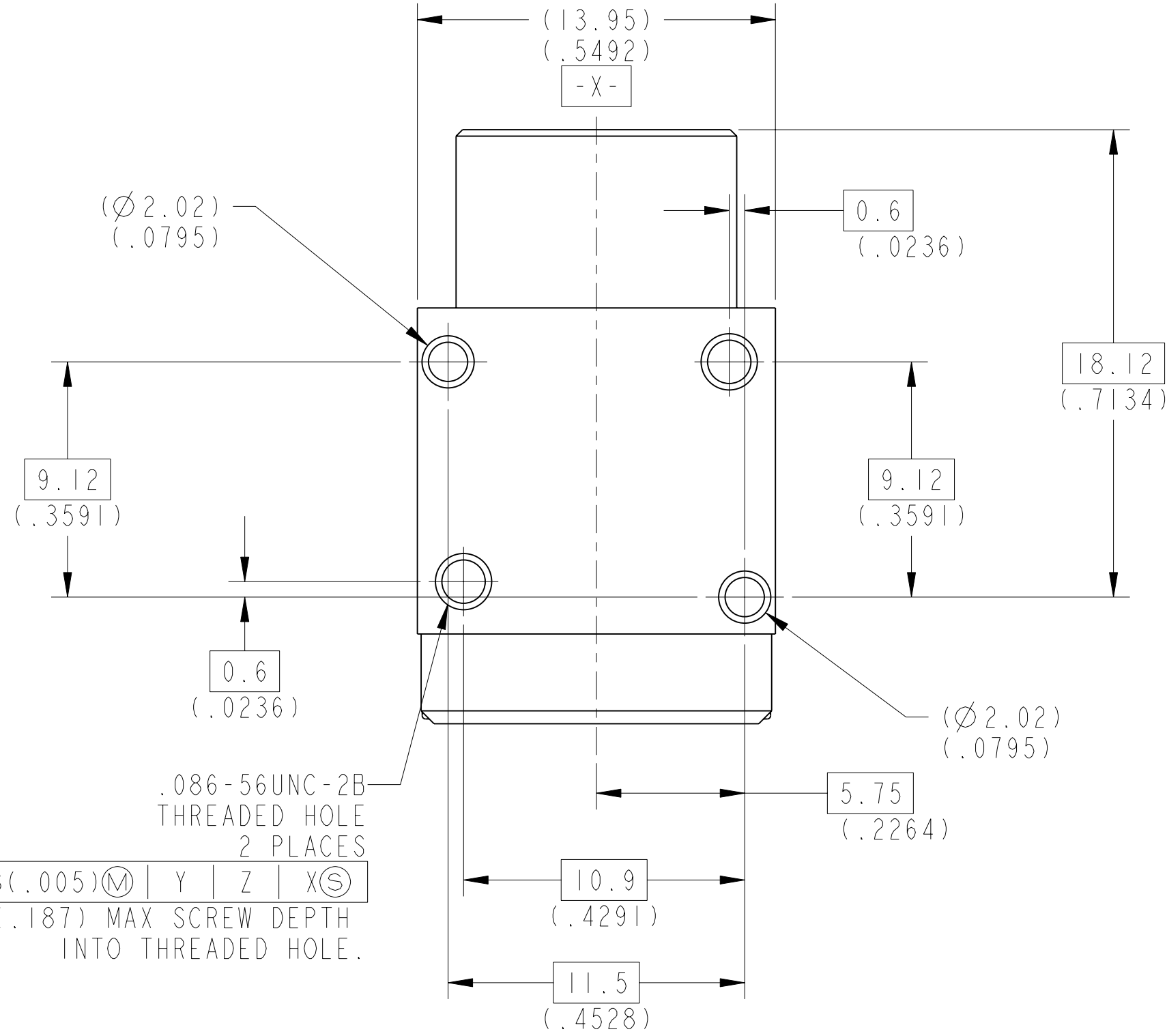
SHEET 1 OF 3

REV. A

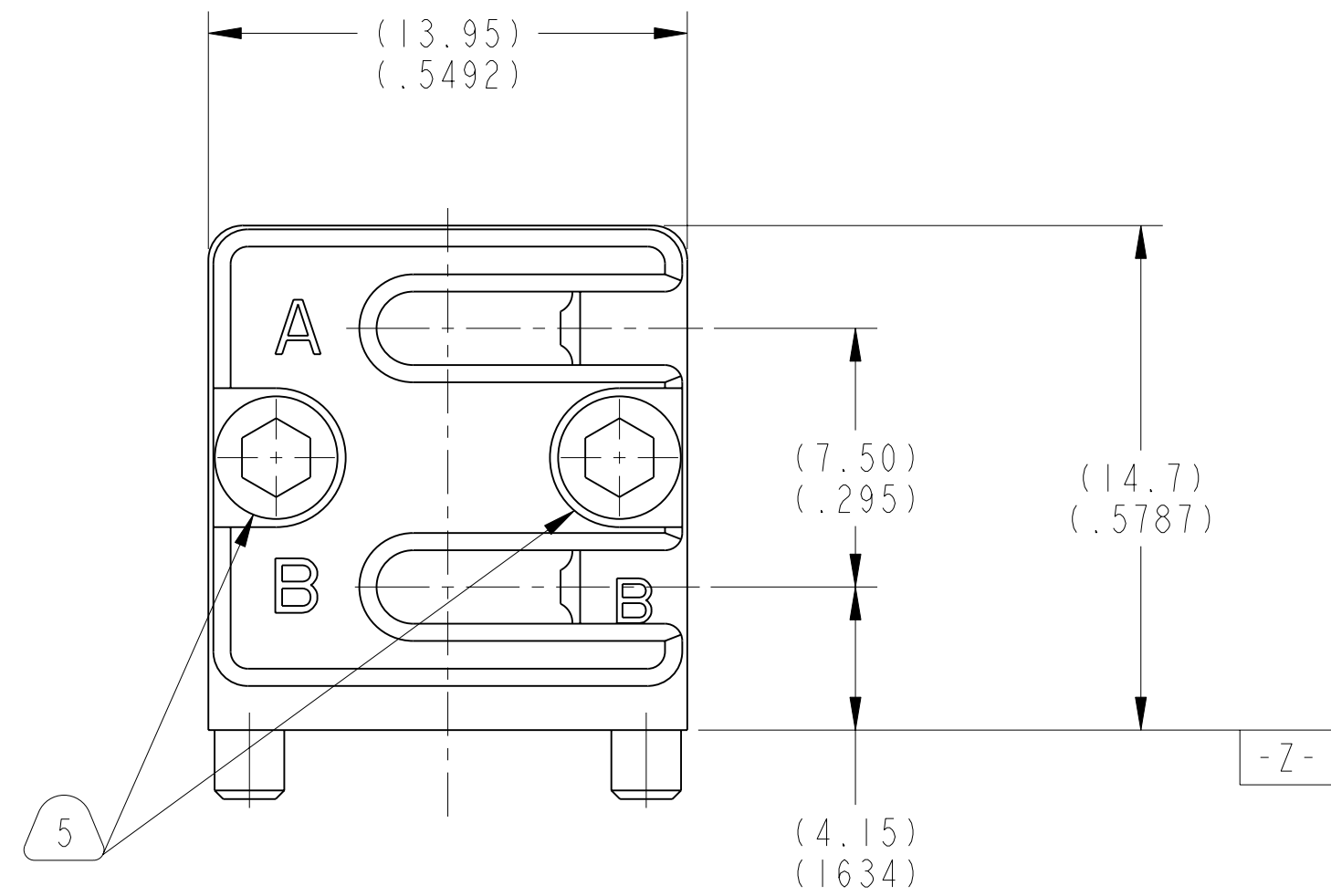
DOCUMENT NO. 10-504637-009

SHEET 1 OF 3

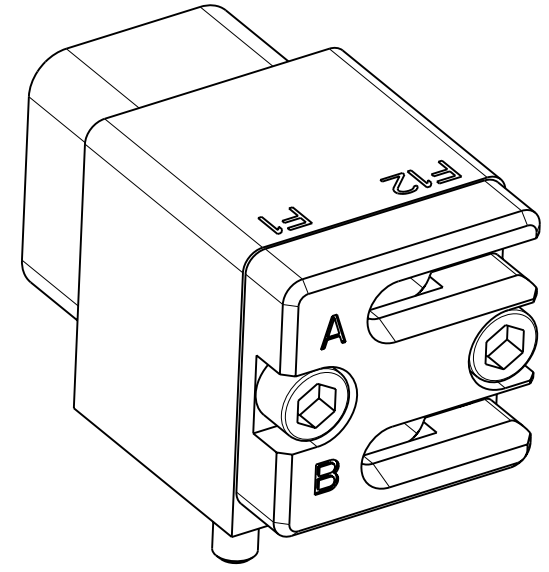
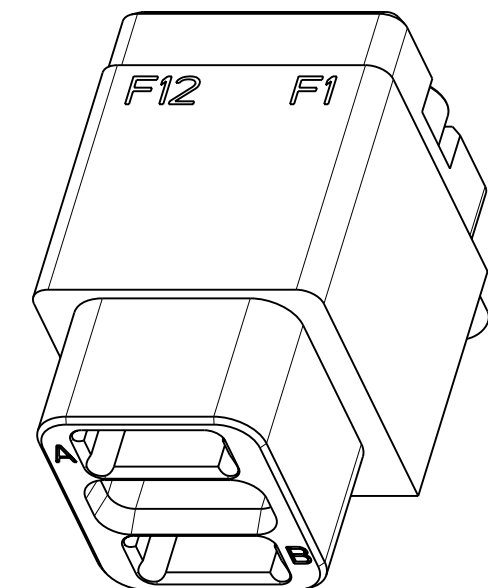
REV. A



VIEW AT B



VIEW AT C



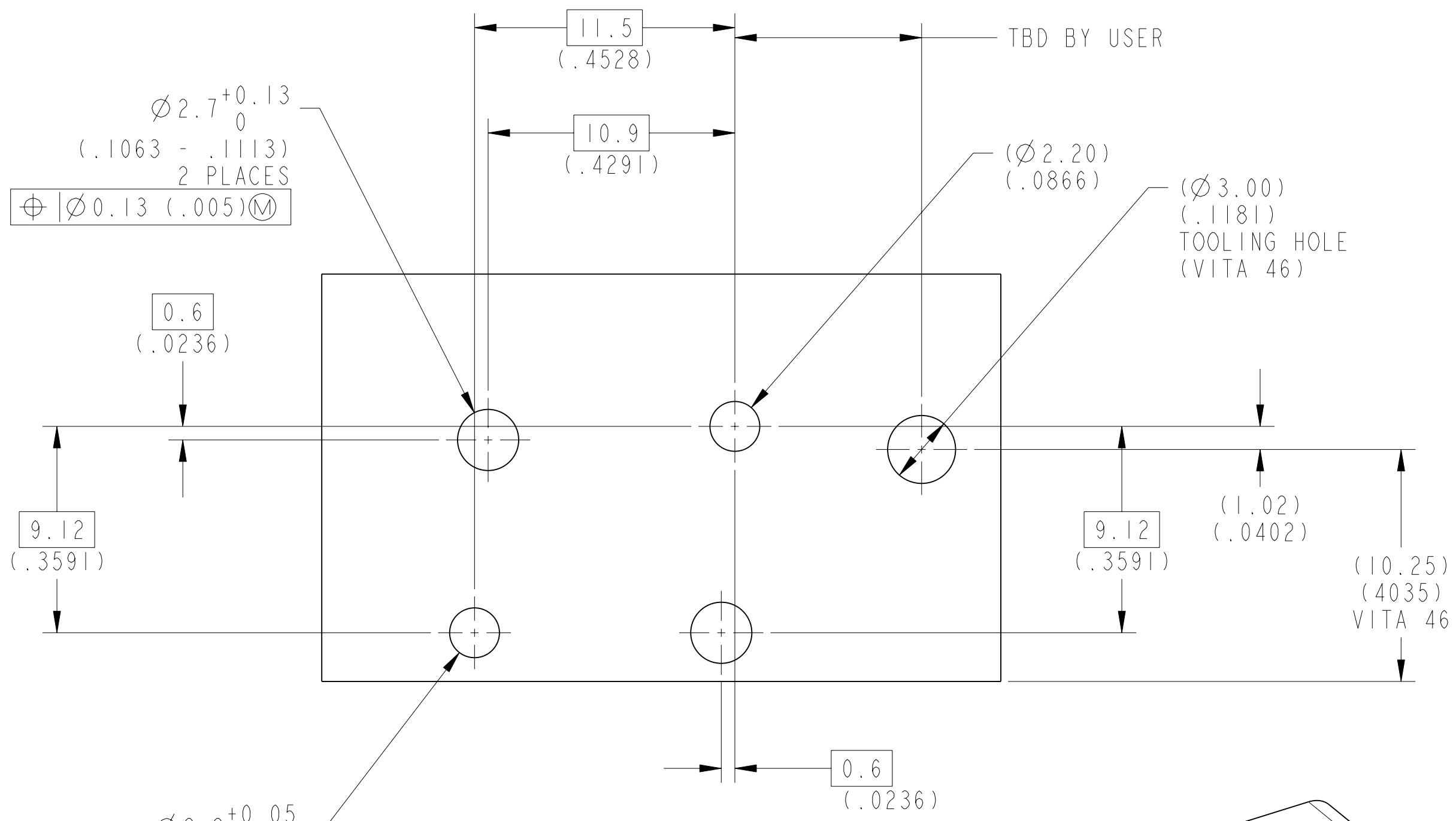
5. RETAINER SCREWS TO BE TIGHTENED TO A TORQUE OF 2 -3 IN-LBS. RETAINER SHOULD BE BOTTOMED ON CONNECTOR BODY.
4. INSERT CAVITIES ARE FOR A FIBER OPTIC MT FERRULE PER IEC 61754-5 MT FERRULES, PIN CLAMP ASSEMBLIES, SPRINGS, AND ASSOCIATED RIBBON CABLE ARE NOT PART OF THIS ASSEMBLY.
3. FOR CONNECTOR INSTALLATION ILLUSTRATION SEE SHEET 3.
2. FOR MATING BACKPLANE CONNECTOR ASSEMBLY, SEE DRAWING 10-504639-007.
1. BLACK INK STAMP "APH" 77820 PART NUMBER AND DATE CODE ON INDICATED SURFACE PER 9-3856-5. DATE CODE PER 9-3895. CHARACTERS TO BE 1.6±.51 (.062±.005 INCH). HIGH. ADDITIONAL INFORMATION MAY BE REQUESTED BY PURCHASE ORDER. STAMP ING CAN BE ON BOTH SIDES OF PART.

MATERIALS AND FINISHES

COMPONENT	MATERIAL/ FINISH
MAIN BODY	BODY - MATERIAL - ALUM. ALLOY PER AMS 4150 FINISH - CHROMATE TREATMENT PER MIL-C-5541, CL 3 HELICAL INSERTS - STAINLESS STEEL 304 SERIES PASSIVATED
MT RETAINER	BODY - MATERIAL - ALUM. ALLOY PER AMS 4150 FINISH - CHROMATE TREATMENT PER MIL-C-5541, CL 3 SCREW - STAINLESS STEEL 300 SERIES PASSIVATED

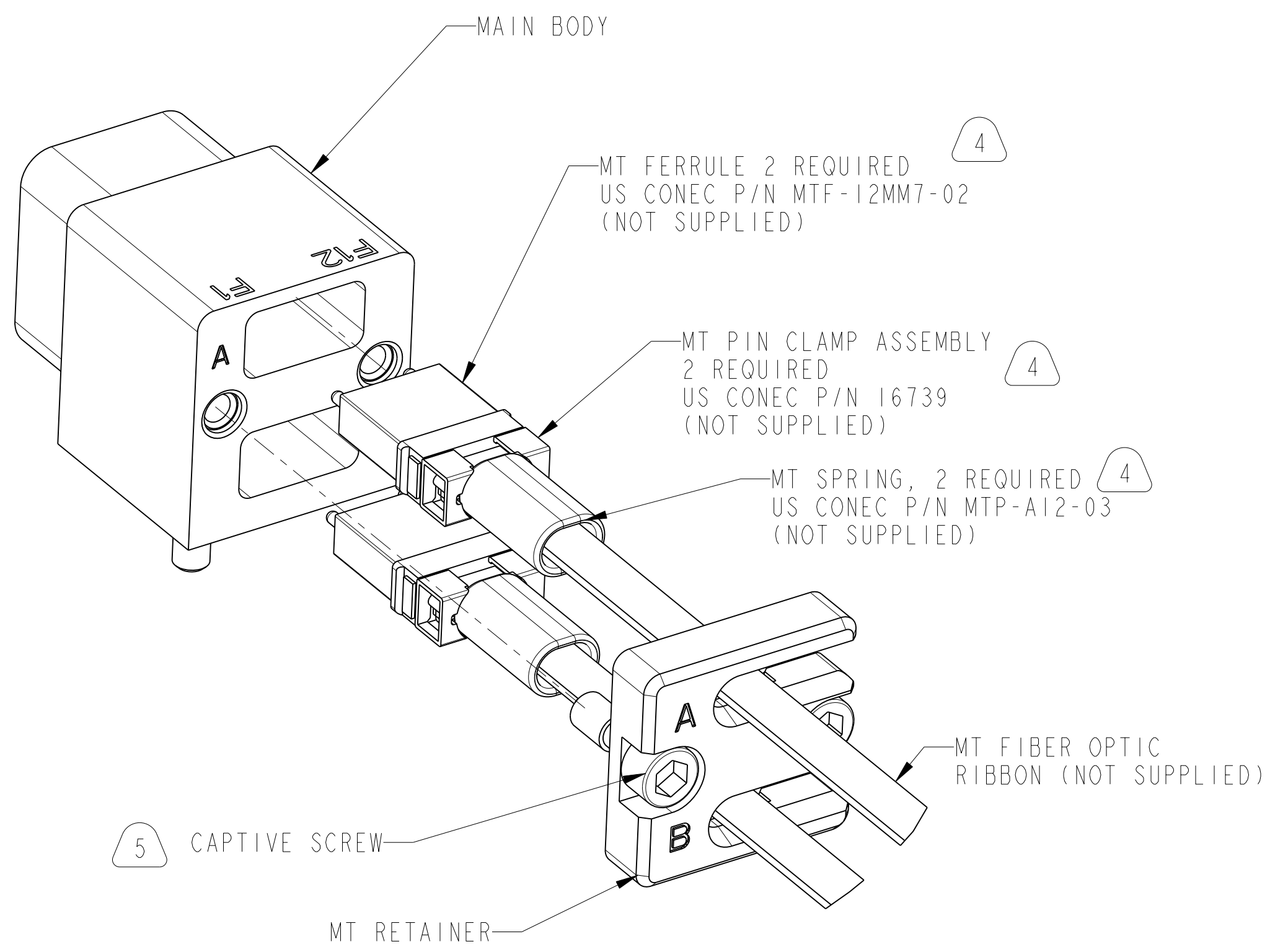
THE USE OF THIS DOCUMENT IS UNLIMITED. HOWEVER, DOCUMENTS REFERENCED HEREON MAY CONTAIN LIMITED RIGHTS DATA.

SIZE C	CAGE CODE 77820	DOCUMENT NO. 10-504637-009	REV. A
SCALE: 3.0	REF. 10-504637-008	SHEET 2 OF 3	



**SUGGESTED MODULE PCB
INTERFACE DIMENSIONS**

SCALE 5.000



**REAR EXPLODED
ASSEMBLY VIEW**

SCALE 4.000

THE USE OF THIS DOCUMENT IS UNLIMITED.
HOWEVER, DOCUMENTS REFERENCED HEREON
MAY CONTAIN LIMITED RIGHTS DATA.

SIZE C	CAGE CODE 77820	DOCUMENT NO. 10-504637-009	REV. A
SCALE: 3.0	REF. 10-504637-008	SHEET 3 OF 3	

DOCUMENT NO. 10-504637-009
 SHEET 3 OF 3
 REV. A
 C
 B
 A
 REV. A
 SHEET 3 OF 3
 DOCUMENT NO. 10-504637-009
 A
 REV. A
 SHEET 3 OF 3
 DOCUMENT NO. 10-504637-009
 SHEET 3 OF 3
 REV. A
 CAGE CODE 77820
 DOCUMENT NO. 10-504637-009
 REV. A
 SCALE: 3.0
 REF. 10-504637-008
 SHEET 3 OF 3