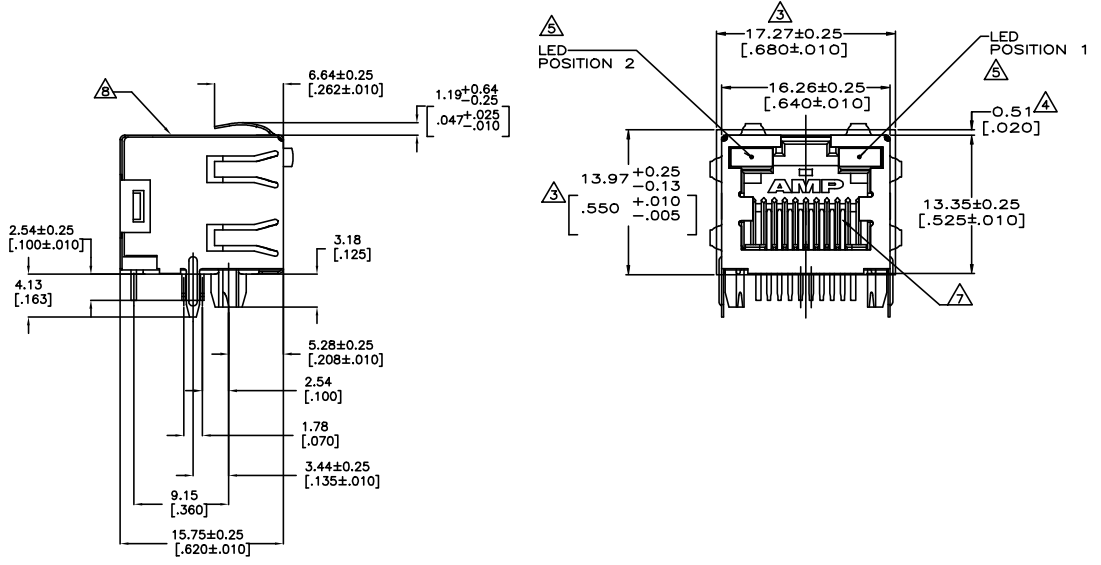
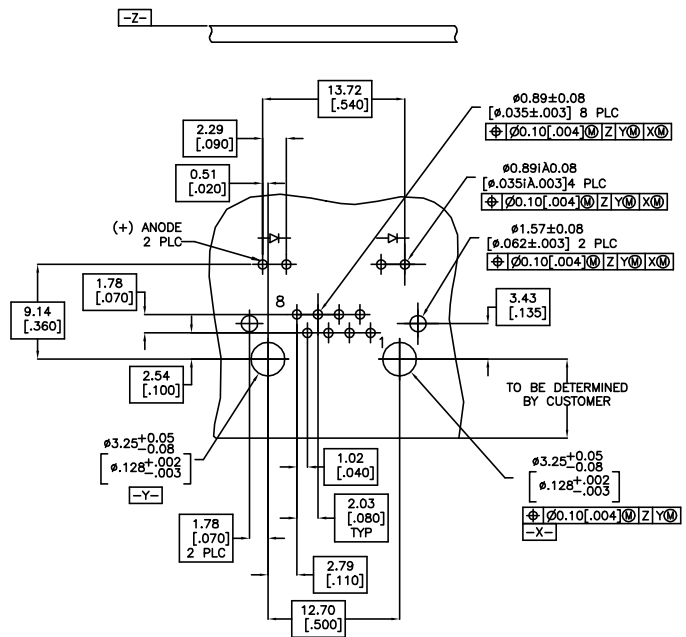


REVISIONS			
#	DATE	DESCRIPTION	BY
B	ECO-18-014918		



- MATERIAL: HOUSING - HIGH TEMPERATURE THERMOPLASTIC, BLACK, UL94V-0. TERMINALS - 0.36[.014] THICK PHOS BRONZE PLATED WITH 3.81um[.000150] MINIMUM THICK TIN-LEAD IN SOLDER AREA. 1.27um [.000050] MINIMUM GOLD IN LOCALIZED PLATE AREA. ENTIRE TERMINAL PLATED WITH 1.27um [.000050] MINIMUM THICK NICKEL. SHIELD - 0.196[.0077] THICK COPPER ZINC ALLOY PREPLATED WITH 1.27um[.000050] MINIMUM SATIN NICKEL WITH 2.03um[.000080] MINIMUM TIN POST DIPPED ON PCB GROUND TABS. LIGHT EMITTING DIODE (LED) - DIFFUSED EPOXY LENS, 0.51 x 0.51[.020 x .020] CARBON STEEL WIREFRAME LEADS PLATED WITH 8.89um[.000350] TIN/COPPER OVER 2.03[000080] SILVER OVER 1.02um[.000040] NICKEL UNDERPLATE OVER 1.02um[.000040] COPPER UNDERPLATE.
  - JACK CAVITY CONFORMS TO FCC RULES AND REGULATIONS PART 68, SUBPART F.
- △ SUGGESTED PANEL OPENING DIMENSIONS.
- △ SUGGESTED CLEARANCE BETWEEN TOP OF CONNECTOR AND TOP PANEL OPENING.
- △ SEE TABLE FOR COLOR OF LEDS AND NUMBER REQUIRED.
- ⊖ THIS MODULAR JACK WITH INTEGRATED LED IS NOT IR REFLOW SOLDERING PROCESS COMPATIBLE.
- △ CONTACT AREA LUBRICATED WITH BELLCORE APPROVED LUBRICANT. TECHNICAL REFERENCE GR-1217-CORE, ISSUE 1, NOVEMBER 1995
- △ MANUFACTURING DATE CODE:  
 LOCATED APPROX. AS SHOWN.  
 FIRST 2 DIGITS = LAST 2 DIGITS OF YEAR.  
 NEXT 2 DIGITS = MANUFACTURING WORK WEEK.  
 LAST DIGIT = DAY OF WEEK WITH SUNDAY = 1.



RECOMMENDED PRINTED CIRCUIT BOARD LAYOUT (COMPONENT SIDE)

OBSOLETE	GREEN	YELLOW	1932112=1
	POSITION 2	POSITION 1	PART NUMBER
	INDICATOR COLOR		

THIS DRAWING IS A CONTROLLED DOCUMENT.		REV: 01/2011	DATE: 31MAY2008	TE Connectivity
DIMENSIONS: mm (INCHES)		REV: 01/2011	DATE: 31MAY2008	
TOLERANCES UNLESS SPECIFIED:		TE Connectivity		
0 PLC	±0.10	105-1163-4	INVERTED MODULAR JACK ASSEMBLY, 1X1, SHIELDED, PANEL GROUND, LED	
1 PLC	±0.05			
2 PLC	±0.025			
3 PLC	±0.015			
4 PLC	±0.0075			
MATERIAL: SEE NOTE 1		REV: 0.000000	A1 00779	SCALE: 4:1
CUSTOMER DRAWING		DATE: 114-2154	REV: C=1932112	