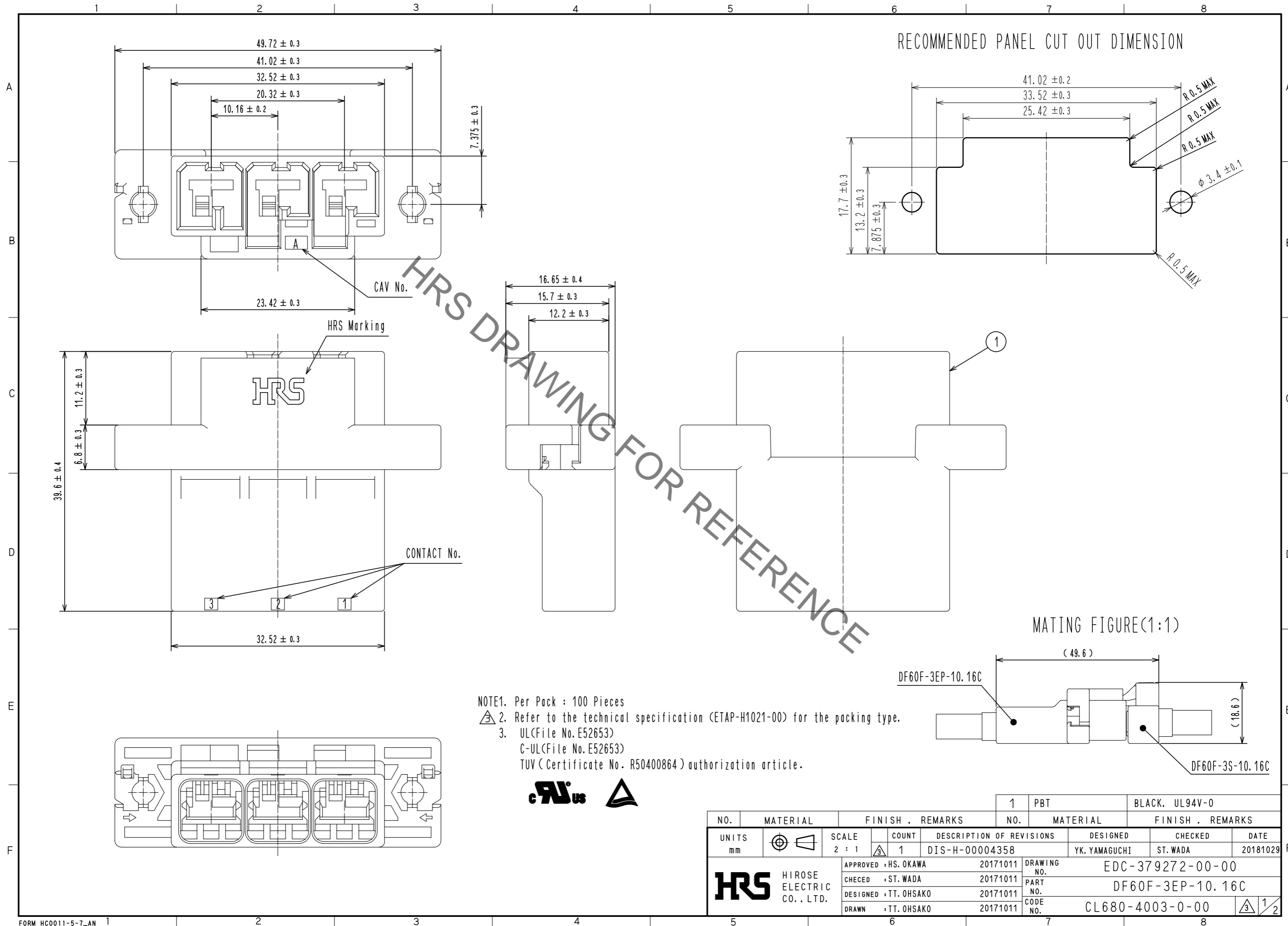


May.1.2023 Copyright 2023 HIROSE ELECTRIC CO., LTD. All Rights Reserved.  
 In case of consideration for using Automotive equipment / device which demand high reliability, kindly contact our sales window correspondents.



NOTE1. Per Pack : 100 Pieces  
 2. Refer to the technical specification (ETAP-H1021-00) for the packing type.  
 3. UL(File No. E52653)  
 C-UL(File No. E52653)  
 TUV (Certificate No. R50400864) authorization article.



NO.	MATERIAL	FINISH . REMARKS	NO.	MATERIAL	FINISH . REMARKS		
1	PBT			BLACK, UL94V-0			
UNITS	mm	SCALE	COUNT	DESCRIPTION OF REVISIONS	DESIGNED	CHECKED	DATE
		2 : 1	1	DIS-H-00004358	YK. YAMAGUCHI	ST. WADA	20181029
APPROVED : HS. OKAWA		20171011		DRAWING NO.		EDC-379272-00-00	
CHECKED : ST. WADA		20171011		PART NO.		DF60F-3EP-10.16C	
DESIGNED : TT. OHSAKO		20171011		CODE NO.		CL680-4003-0-00	
DRAWN : TT. OHSAKO		20171011				1/2	

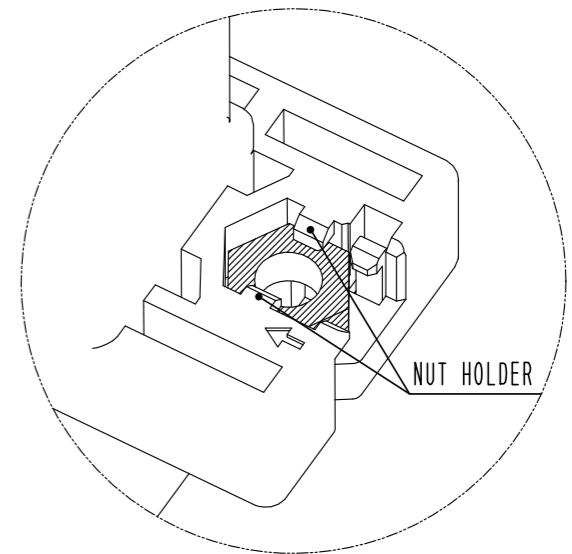
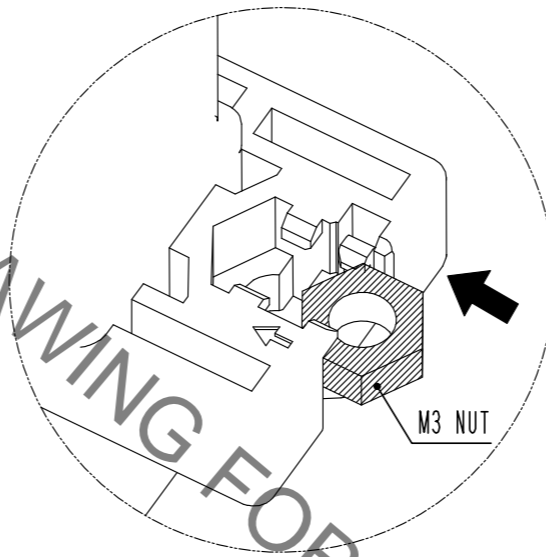
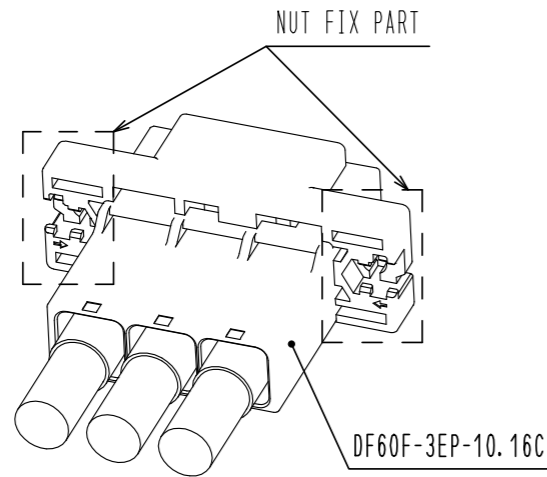
May.1.2023 Copyright 2023 HIROSE ELECTRIC CO., LTD. All Rights Reserved.  
In case of consideration for using Automotive equipment / device which demand high reliability, kindly contact our sales window correspondents.

# DF60F IN-LINE TYPE RECOMMENDED PANEL MOUNTING MANUAL (WHEN NUTS USES)

## NUT INSTALLATION PROCESS

1. SLIDE A NUT (SIZE:M3) TO NUT FIX PART.

2. PRESS DOWN THE NUT UNTIL IT CLICKS,  
THEN THIS SOUND MEANS THE NUT HAS INSERTED  
INTO NUT HOLDER.

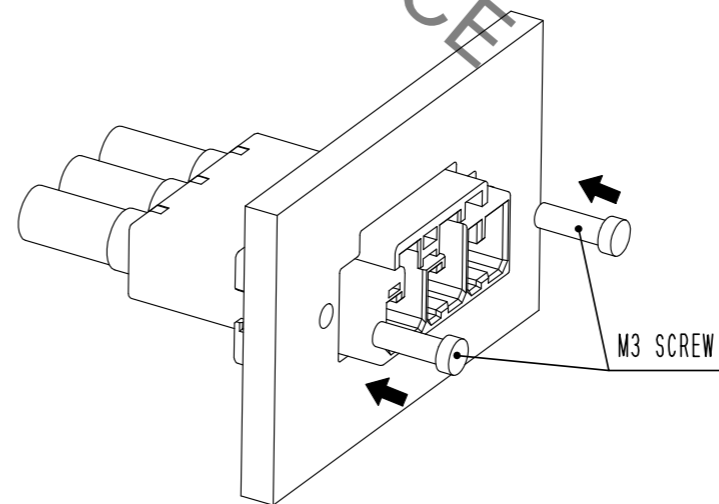
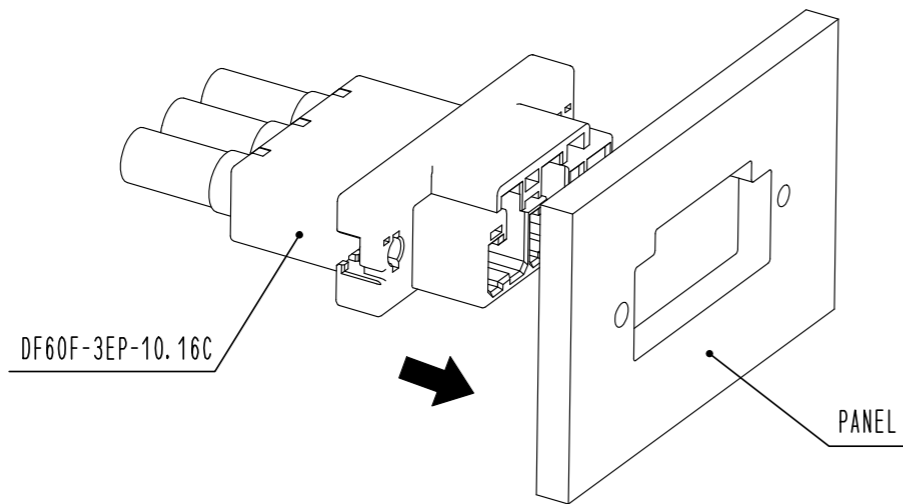


HRS DRAWING FOR REFERENCE

## PANEL MOUNTING PROCESS

1. INSERT CONNECTOR INTO PANEL CUT OUT PART.

2. TIGHTEN A SCREW (SIZE:M3) TO FIX WITH PANEL.  
RECOMMENDED TORQUE : LESS THAN 0.49N · m



<b>HRS</b>	DRAWING NO.	EDC-379272-00-00
	PART NO.	DF60F-3EP-10.16C
	CODE NO.	CL680-4003-0-00
		3/2