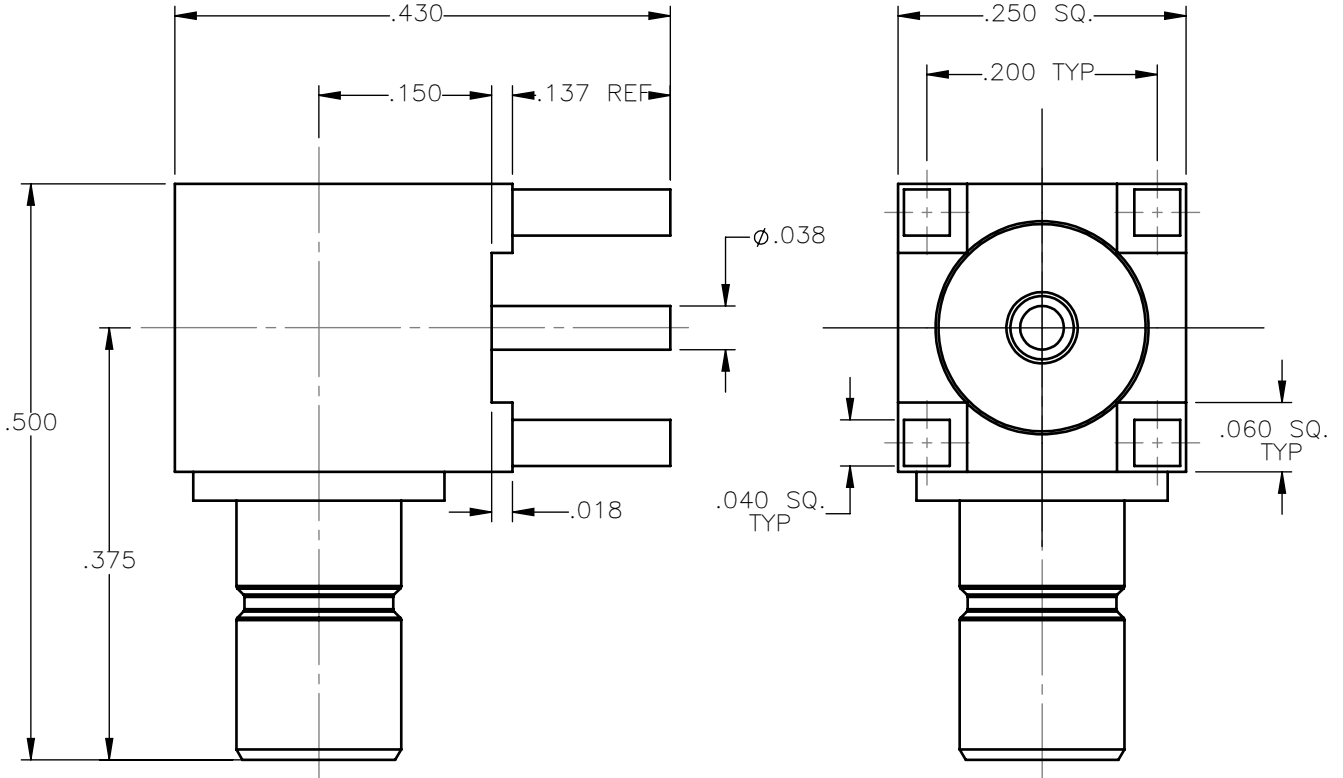


REVISIONS			
REV.	DESCRIPTION	DATE	APPROVED
A	INITIAL RELEASE	01/28/15	N.D.





MATERIALS:

1. INSULATORS = VIRGIN WHITE TEFLON PER ASTM D1710, GRADE 1, TYPE I, CLASS "B".
2. ALL OTHER METAL PARTS = BRASS PER ASTM B16, ALLOY C36000, TEMPER H02.

FINISHES:

1. CONTACTS = GOLD PLATE PER ASTM B488-01, TYPE II, 50 μ in MIN, GRADE C, OVER 100 TO 200 μ in STRESS FREE SULFAMATE NICKEL PER QQ-N-290.
2. ALL OTHER METAL PARTS = GOLD PLATE PER ASTM B488-01, TYPE II, 30 μ in MIN, GRADE C OVER 100 TO 200 μ in COPPER STRIKE PER MIL-C-14550.

UNLESS OTHERWISE SPECIFIED DIMENSIONS ARE IN INCHES TOLERANCES ON	DWN:	DATE	 Property of Radiall This document cannot be reproduced or communicated to a third party without prior written permission of RADIALL.		
	N.D.	01/28/15			
DECIMAL	ANGLE	CHKD:	DATE	SMB RIGHT ANGLE MALE JACK P.C.B. MOUNT RECEPTACLE	
		D.N.	01/28/15		
		APVD:	DATE		
REFERENCE:	MATERIALS AND FINISHES:	J.M.	01/28/15	SIZE: A FSCM NO.: 19505 DWG NO.: 2010-1511-017 SCALE: 6:1 THIRD ANGLE PROJECTION	REV: A SHEET 1 OF 1
ORIGINATED: N.D. DATE: 01/28/15	SEE NOTES				

2010-1511-017