

3.50 mm TO 34 GHz

3.50 mm Cable Assemblies RF23S



VSWR

RF23S: 1.30 max

SERIES

RF23S
= MWC-2350-01 microwave cable with 23 AWG solid FEP Dielectric

END 1 CONNECTOR

-35SJP
= 3.50 mm Straight Jack
-35SPP
= 3.50 mm Straight Plug

END 2 CONNECTOR

OVERALL LENGTH

-"XXXX"
= Overall Length in millimeters
-0100 (100 mm) 3.94" min.

3.50 mm Cable Connectors PRF35

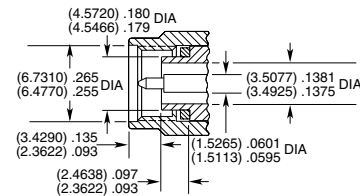
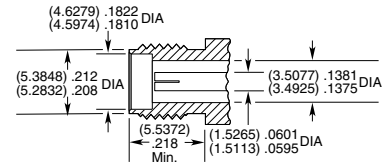


CONNECTORS FOR INDUSTRY STANDARD CABLES

PRF35-P-C-EP-405-SS	RG 405, .085, semi-rigid
PRF35-J-C-EP-402-SS	RG 402, .141, semi-rigid
PRF35-J-C-EP-402-BS	RG 402, .141, semi-rigid
PRF35-P-C-EP-402-SS	RG 402, .141, semi-rigid
PRF35-P-C-EP-120A-SS	Semflex HP120, low loss flexible
PRF35-J-C-EP-160-SS	Semflex HP160, low loss flexible
PRF35-P-C-EP-160-SS	Semflex HP160, low loss flexible

P-C = Cable Plug
J-C = Cable Jack
EP = Plating (50 μ" Gold center contact, passivated outer contact)
SS = Straight, Solder Clamp
BS = Bulkhead, Solder Clamp

INTERFACE STANDARD



SSMA TO 34 GHz

SSMA Cable Connectors PRFS1



CONNECTORS FOR INDUSTRY STANDARD CABLES

PRFS1-J-C-EE-405-BD	RG 405, .085, semi-rigid
PRFS1-P-C-EE-405-SD	RG 405, .085, semi-rigid
PRFS1-P-C-EP-141A-SS	Harbour SS402, flexible alternative to RG 402

P-C = Cable Plug
J-C = Cable Jack
EE = Plating (50 μ" Gold center contact & outer contact)
EP = Plating (50 μ" Gold center contact, passivated outer contact)
SS = Straight, Solder Clamp
SD = Straight, Direct Solder
BD = Bulkhead, Direct Solder

INTERFACE STANDARD

