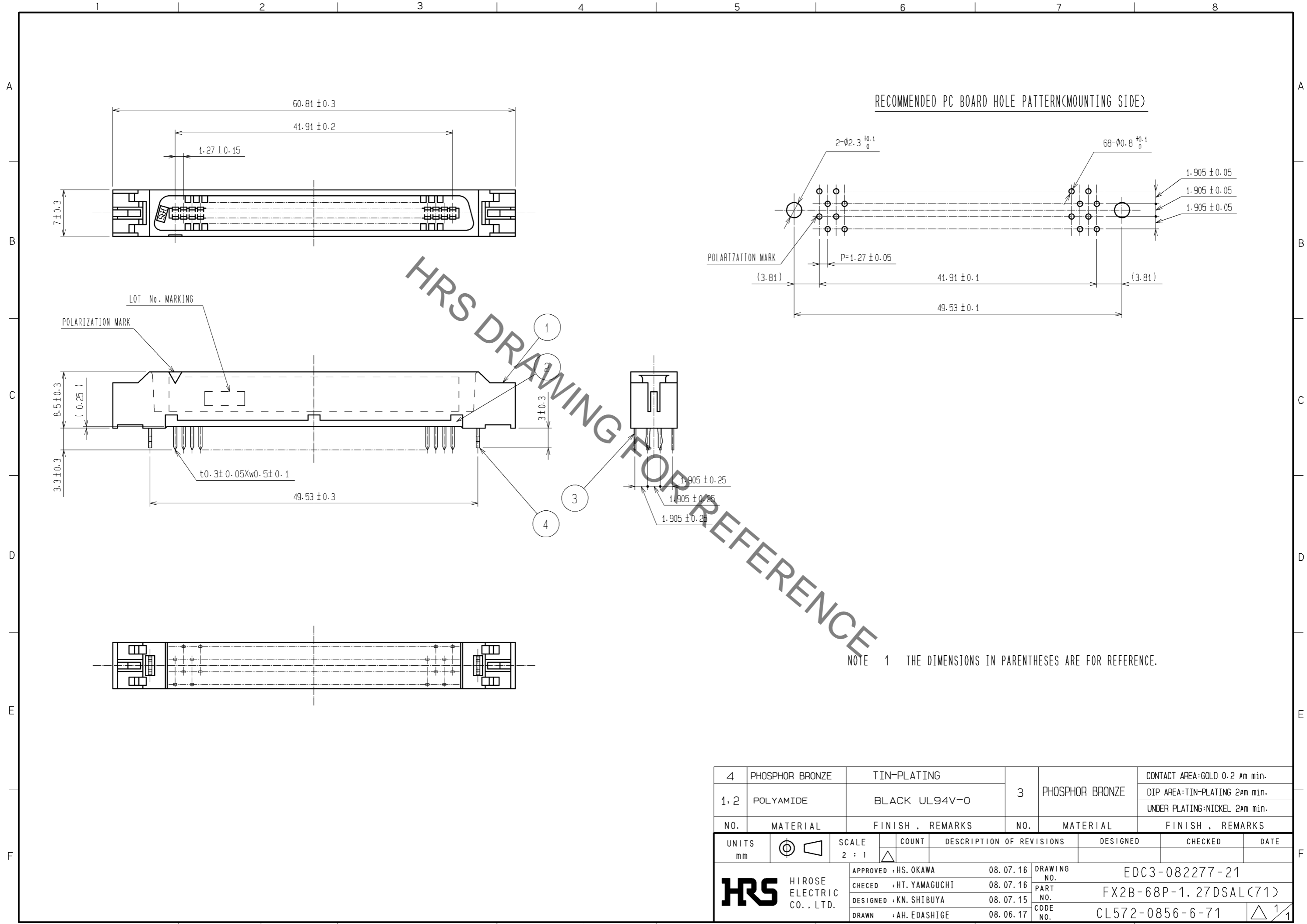


May.1.2023 Copyright 2023 HIROSE ELECTRIC CO., LTD. All Rights Reserved.  
In case of consideration for using Automotive equipment / device which demand high reliability, kindly contact our sales window correspondents.



HRS DRAWING FOR REFERENCE

NOTE 1 THE DIMENSIONS IN PARENTHESES ARE FOR REFERENCE.

4	PHOSPHOR BRONZE	TIN-PLATING			CONTACT AREA:GOLD 0.2 μm min.			
1, 2	POLYAMIDE	BLACK UL94V-0	3	PHOSPHOR BRONZE	DIP AREA:TIN-PLATING 2μm min. UNDER PLATING:NICKEL 2μm min.			
NO.	MATERIAL	FINISH . REMARKS	NO.	MATERIAL	FINISH . REMARKS			
UNITS mm		SCALE 2 : 1		COUNT	DESCRIPTION OF REVISIONS	DESIGNED	CHECKED	DATE
<b>HRS</b> HIROSE ELECTRIC CO., LTD.		APPROVED : HS. OKAWA	08. 07. 16	DRAWING NO. EDC3-082277-21				
		CHECED : HT. YAMAGUCHI	08. 07. 16	PART NO. FX2B-68P-1. 27DSAL(71)				
		DESIGNED : KN. SHIBUYA	08. 07. 15	CODE NO. CL572-0856-6-71				
		DRAWN : AH. EDASHIGE	08. 06. 17					