

28342.7 PC-SB 5X5/48 WH

Terminal marker / PC Card, Length: 5 mm, Width: 5 mm, Colour: White

RAL: 9010

Business data

Article number	<u>28342.7</u>
Article name	PC-SB 5X5/48 WH
GTIN (EAN)	4044211210380
Packaging unit	960
Quantity unit	PC
Number of markers per card	48 ST
Weight per piece (not including packaging)	0.17 g
Weight per piece (including packaging)	0.2 g
Unit of weight	G
Customs number	39269097
Country of origin	DE
Product description	Terminal marker / PC Card
Colour	White

Technical data

Dimensions

Length	5 mm
--------	------

Width	5 mm
-------	------

Materials

Marker material	Polycarbonate
-----------------	---------------

Flammability class UL 94	V-0
--------------------------	-----

Working temperature, min.	-40 °C
---------------------------	--------

Working temperature, max.	130 °C
---------------------------	--------

Halogen-free	✓
--------------	---

Silicone-free	✓
---------------	---

Further technical data

Mounting	Joined together
----------	-----------------

Software code	402
---------------	-----

Environmental Product Compliance

REACH Conform	yes
---------------	-----

REACH Reference date	2023-01-17
----------------------	------------

REACH Candidate Substance Note	No
--------------------------------	----

RoHS Conform	yes
--------------	-----

Data sheet

28342.7 PC-SB 5X5/48 WH



Media

Accessories

Printer



Thermal transfer printer TTPCard including a power cord, USB cable, dust cover, black thermal transfer film (28010.4), three inlays: CCI-PC-SB 5x5 (28020.0), CCI-PC-CPM-10/BSTR (28027.0), CCI-PC/PVC/PVCF (28041.0), CONTASign PRO software in 16 languages (German, English, French, Italian, Dutch, Spanish, Portuguese, Czech, Polish, Bulgarian, Romanian, Slovenian, Turkish, Chinese, Japanese, Russian) for Windows versions 7, 8, 10. (available for download)

Article number	Article name	GTIN (EAN)	Packaging unit
<u>28000.0</u>	TTPCard Set	4044211207397	1 ST

Inlays

Printer inlay

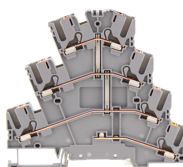
Article number	Article name	GTIN (EAN)	Packaging unit
<u>28020.0</u>	CCI-PC-SB 5X5	4044211208325	1 ST

##INVERSE##CONTA-CONNECT



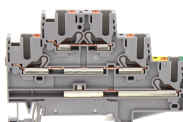
Three-level initiator terminal |Multi-wire terminal, Push-in connection, Mounting type: Mounting rail TS 35/7.5, Rated cross-section: 2.5 mm², Width: 5.1 mm, Colour: Grey

Article number	Article name	GTIN (EAN)	Packaging unit
<u>27046.6</u>	PVMak 2,5 GR	4044211227289	50 ST



Three-level initiator terminal |Multi-wire terminal, Push-in connection, Mounting type: Mounting rail TS 35/7.5, Rated cross-section: 2.5 mm², Width: 5.1 mm, Colour: Grey

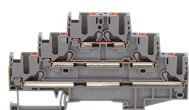
Article number	Article name	GTIN (EAN)	Packaging unit
<u>27047.6</u>	PVMak 2,5/SV GR	4044211227296	50 ST



Three-level initiator terminal |Multi-wire terminal, Push-in connection, Mounting type: Mounting rail TS 35/7.5, Rated cross-section: 2.5 mm², Width: 5.1 mm, Colour: Grey

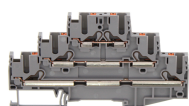
Article number	Article name	GTIN (EAN)	Packaging unit
<u>27048.6</u>	PIKD 2,5/1PE/L/L GR	4044211227173	50 ST

##INVERSE##CONTA-CONNECT



Three-level initiator terminal | Multi-wire terminal, Push-in-connection, Mounting type: Mounting rail TS 35/7.5, Rated cross-section: 2.5 mm², Width: 5,1 mm, Colour: Grey

Article number	Article name	GTIN (EAN)	Packaging unit
<u>27039.6</u>	PIKD 2,5 GR	4044211227210	50



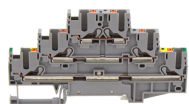
Three-level initiator terminal | Multi-wire terminal, Push-in-connection, Mounting type: Mounting rail TS 35/7.5, Rated cross-section: 2.5 mm², Width: 5,1 mm, Colour: Grey

Article number	Article name	GTIN (EAN)	Packaging unit
<u>27039.6</u>	PIKD 2,5 GR	4044211227210	50



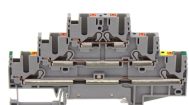
Three-level initiator terminal | Multi-wire terminal, Push-in-connection, Mounting type: Mounting rail TS 35/7.5, Rated cross-section: 2.5 mm², Width: 5,1 mm, Colour: Grey

Article number	Article name	GTIN (EAN)	Packaging unit
<u>27040.2</u>	PIKD 2,5/SV/PE GNYE	4044211227227	50 ST



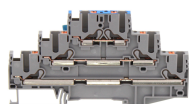
Three-level initiator terminal | Multi-wire terminal, Push-in connection, Mounting type: Mounting rail TS 35/7.5, Rated cross-section: 2.5 mm², Width: 5.1 mm, Colour: Grey

Article number	Article name	GTIN (EAN)	Packaging unit
<u>27042.6</u>	PIKD 2,5/PE/L/L GR	4044211227258	50 ST



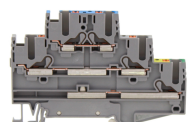
Three-level initiator terminal | Multi-wire terminal, Push-in connection, Mounting type: Mounting rail TS 35/7.5, Rated cross-section: 2.5 mm², Width: 5.1 mm, Colour: Grey

Article number	Article name	GTIN (EAN)	Packaging unit
<u>27042.6</u>	PIKD 2,5/PE/L/L GR	4044211227258	50 ST



Three-level initiator terminal | Multi-wire terminal, Push-in connection, Mounting type: Mounting rail TS 35/7.5, Rated cross-section: 2.5 mm², Width: 5.1 mm, Colour: Grey

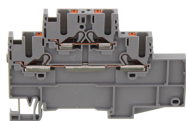
Article number	Article name	GTIN (EAN)	Packaging unit
<u>27045.6</u>	PIKD 2,5/L/L/N GR	4044211227272	50 ST



Three-level initiator terminal | Multi-wire terminal, Push-in connection, Mounting type: Mounting rail TS 35/7.5, Rated cross-section: 2.5 mm², Width: 5.1 mm, Colour: Grey

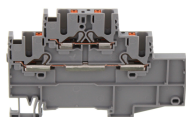
Article number	Article name	GTIN (EAN)	Packaging unit
<u>27049.6</u>	PIKD 2,5/1PE/L/N GR	4044211227180	50 ST

##INVERSE##CONTA-CONNECT



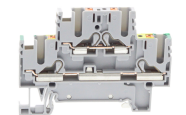
Three-level initiator terminal |Multi-wire terminal, Push-in connection, Mounting type: Mounting rail TS 35/7.5, Rated cross-section: 2.5 mm², Width: 5.1 mm, Colour: Grey

Article number	Article name	GTIN (EAN)	Packaging unit
27050.6	PIKD 2,5/1/L/L GR	4044211227302	50 ST



Three-level initiator terminal |Multi-wire terminal, Push-in connection, Mounting type: Mounting rail TS 35/7.5, Rated cross-section: 2.5 mm², Width: 5.1 mm, Colour: Grey

Article number	Article name	GTIN (EAN)	Packaging unit
27050.6	PIKD 2,5/1/L/L GR	4044211227302	50 ST



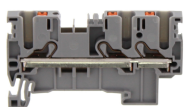
Double-level terminal, Push-in connection, Mounting type: Mounting rail TS 35/7.5, Rated cross-section: 2.5 mm², Width: 5.1 mm, Colour: Grey

Article number	Article name	GTIN (EAN)	Packaging unit
27051.6	PRKD 2,5/PE/L GR	4044211227159	50 ST



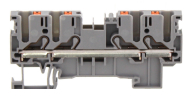
Protective earth terminal, Push-in connection, Mounting type: Mounting rail TS 35/7.5, Rated cross-section: 2.5 mm², Width: 5.1 mm, Colour: Green-yellow

Article number	Article name	GTIN (EAN)	Packaging unit
27011.2	PSL 2,5/4A GNYE	4044211223885	50 ST



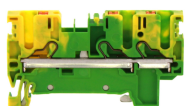
Feed-through terminal, Push-in connection, Mounting type: Mounting rail TS 35/7.5, Rated cross-section: 2.5 mm², Width: 5.1 mm, Colour: Grey

Article number	Article name	GTIN (EAN)	Packaging unit
27008.6	PRK 2,5/3A GR	4044211223830	50



Feed-through terminal, Push-in connection, Mounting type: Mounting rail TS 35/7.5, Rated cross-section: 2.5 mm², Width: 5.1 mm, Colour: Grey

Article number	Article name	GTIN (EAN)	Packaging unit
27010.6	PRK 2,5/4A GR	4044211223878	50

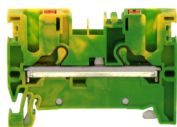


Protective earth terminal, Push-in connection, Mounting type: Mounting rail TS 35/7.5, Rated cross-section: 2.5 mm², Width: 5.1 mm, Colour: Green-yellow

Article number	Article name	GTIN (EAN)	Packaging unit
27009.2	PSL 2,5/3A GNYE	4044211223847	50 ST

28342.7 PC-SB 5X5/48 WH

##INVERSE##CONTA-CONNECT



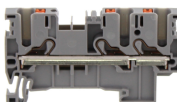
Protective earth terminal, Push-in connection, Mounting type: Mounting rail TS 35/7.5, Rated cross-section: 2.5 mm², Width: 5.1 mm, Colour: Green-yellow

Article number	Article name	GTIN (EAN)	Packaging unit
<u>27007.2</u>	PSL 2,5/2A GNYE	4044211223809	50 ST



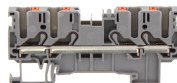
Protective earth terminal, Push-in connection, Mounting type: Mounting rail TS 35/7.5, Rated cross-section: 2.5 mm², Width: 5.1 mm, Colour: Green-yellow

Article number	Article name	GTIN (EAN)	Packaging unit
<u>27011.2</u>	PSL 2,5/4A GNYE	4044211223885	50 ST



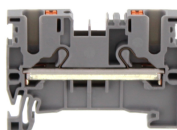
Feed-through terminal, Push-in connection, Mounting type: Mounting rail TS 35/7.5, Rated cross-section: 2.5 mm², Width: 5.1 mm, Colour: Grey

Article number	Article name	GTIN (EAN)	Packaging unit
<u>27008.6</u>	PRK 2,5/3A GR	4044211223830	50



Feed-through terminal, Push-in connection, Mounting type: Mounting rail TS 35/7.5, Rated cross-section: 2.5 mm², Width: 5.1 mm, Colour: Grey

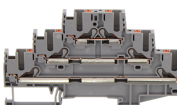
Article number	Article name	GTIN (EAN)	Packaging unit
<u>27010.6</u>	PRK 2,5/4A GR	4044211223878	50



Feed-through terminal, Push-in connection, Mounting type: Mounting rail TS 35/7.5, Rated cross-section: 2.5 mm², Width: 5.1 mm, Colour: Grey

Article number	Article name	GTIN (EAN)	Packaging unit
<u>27006.6</u>	PRK 2,5/2A GR	4044211223793	50

##INVERSE##CONTA-CONNECT

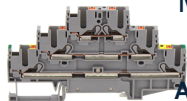


Three-level initiator terminal | Multi-wire terminal, Push-in-connection, Mounting type: Mounting rail TS 35/7.5, Rated cross-section: 2.5 mm², Width: 5,1 mm, Colour: Grey

Article number	Article name	GTIN (EAN)	Packaging unit
<u>27039.6</u>	PIKD 2,5 GR	4044211227210	50

28342.7 PC-SB 5X5/48 WH

##INVERSE##CONTA-CONNECT



Three-level initiator terminal | Multi-wire terminal, Push-in connection, Mounting type:
Mounting rail TS 35/7.5, Rated cross-section: 2.5 mm², Width: 5.1 mm, Colour: Grey

Article number	Article name	GTIN (EAN)	Packaging unit
<u>27042.6</u>	PIKD 2,5/PE/L/L GR	4044211227258	50 ST