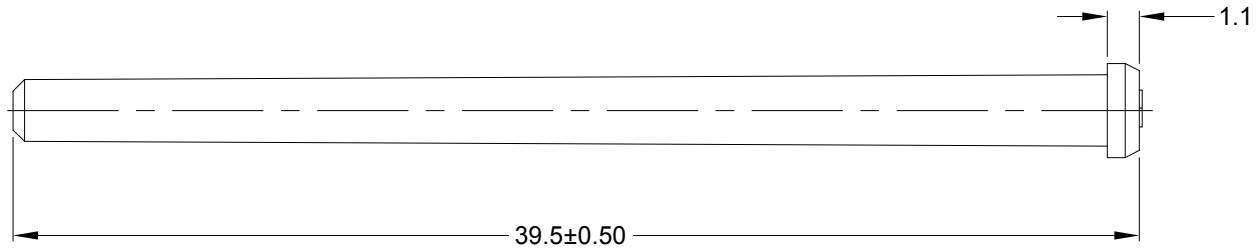
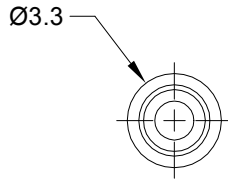
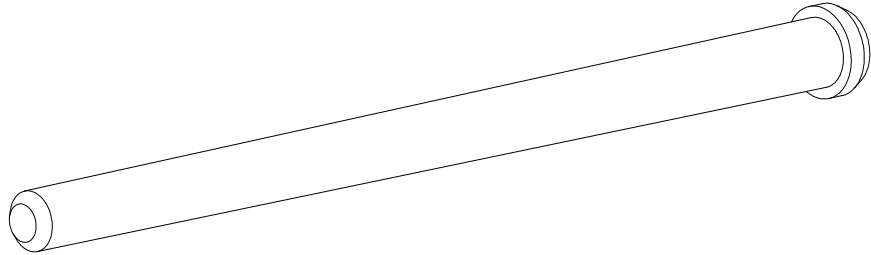


REVISIONS					
REV	ECO	DESCRIPTION	DATE	BY	APPR
A1	-	RELEASE NUMBER	12JUL19	BROOK	TOMMY



NOTES: UNLESS OTHERWISE SPECIFIED

1. MATERIAL: THERMOPLASTIC; RoHS COMPLIANT
2. COLOR: RED
3. CONTACT SIZE 16
4. FIT AT SERIES SHRINK RELIEF CONNECTOR
5. FOR LOCK FUNCTION, INSERT LARGE END FIRST
6. ALL DIMENSIONS ARE FOR REFERENCE USE ONLY

	AT13-217-1605-SR										
	PART NUMBER	DESCRIPTION	ITEM								
QUANTITY	MATERIALS LIST										
UNLESS OTHERWISE SPECIFIED 1) All dimensions are in metric(mm). 2) Tolerances are as follows: 1 PL DEC ±0.30 2 PL DEC ±0.15 3 PL DEC ±0.08 Fractions ±1/64 Angles ±1° 3) Note reference =	SIGNATURES	DATE	<h1 style="text-align: center;">Amphenol</h1> <p style="text-align: center;">Sine Systems - www.amphenol-sine.com 44724 Morley Drive Clinton Township, MI 48036</p>								
	DRAWN: BROOK	12JUL19									
CHECKED: ORION	12JUL19										
ENGINEER:											
MATERIAL SPECIFICATIONS:	APPROVAL: TOMMY	12JUL19	LOCKING SEALING PLUG, SIZE 16, SR, RED								
PROCESS SPECIFICATIONS:	CUSTOMER:										
NEXT ASSY:	THIS DRAWING IS SUPPLIED FOR INFORMATION ONLY. DESIGN FEATURES, SPECIFICATIONS AND PERFORMANCE DATA SHOWN HEREON ARE THE PROPERTY OF THE AMPHENOL CORPORATION. NO RIGHTS OF REPRODUCTION ARE IMPLIED. ALL DIMENSIONS ARE SUBJECT TO NORMAL MANUFACTURING VARIATIONS.		<table border="1"> <tr> <td>SIZE</td> <td>TYPE</td> <td>DWG NO:</td> <td>REVISION</td> </tr> <tr> <td>A</td> <td>C-</td> <td>AT13-217-1605-SR</td> <td>A1</td> </tr> </table>	SIZE	TYPE	DWG NO:	REVISION	A	C-	AT13-217-1605-SR	A1
SIZE	TYPE	DWG NO:	REVISION								
A	C-	AT13-217-1605-SR	A1								
	SCALE: NONE		SHEET 1 OF 1								