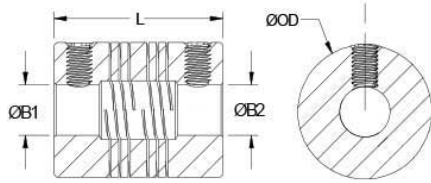




PSR10-2.5-2.5-A


Ruland PSR10-2.5-2.5-A, 5/32" x 5/32" Four Beam Coupling, Aluminum, Set Screw Style, 0.625" OD, 0.800" Length



Description

Ruland PSR10-2.5-2.5-A is a set screw style four beam coupling with 0.1563" x 0.1563" bores, 0.625" OD, and 0.800" length. It is machined from a single piece of material and feature two sets of two spiral cuts. This gives it higher torque capacity, lower windup, and larger body sizes than single beam couplings. PSR10-2.5-2.5-A is zero-backlash and has a balanced design for reduced vibration at high speeds of up to 6,000 RPM. This four beam spiral coupling is zero-backlash and has a balanced design for reduced vibration at high speeds of up to 6,000 RPM. All hardware is metric and tests beyond DIN 912 12.9 standards for maximum torque capabilities. PSR10-2.5-2.5-A is made from 7075 aluminum for lightweight and low inertia. It is machined from bar stock that is sourced exclusively from North American mills and RoHS3 and REACH compliant. PSR10-2.5-2.5-A is manufactured in our Marlborough, MA factory under strict controls using proprietary processes.

Product Specifications

Bore (B1)	0.1563 in	Small Bore (B2)	0.1563 in
B1 Max Shaft Penetration	0.377 in	B2 Max Shaft Penetration	0.377 in
Outer Diameter (OD)	0.625 in	Bore Tolerance	+0.001 in / -0.000 in
Length (L)	0.800 in	Recommended Shaft Tolerance	+0.0000 in / -0.0005 in
Forged Set Screw	M3	Screw Material	Alloy Steel
Hex Wrench Size	1.5 mm	Screw Finish	Black Oxide
Seating Torque	0.92 Nm	Number of Screws	2 ea
Dynamic Torque Reversing	3 lb-in	Angular Misalignment	3°
Dynamic Torque Non-Reversing	6 lb-in	Parallel Misalignment	0.008 in
Static Torque	12 lb-in	Axial Motion	0.005 in
Torsional Stiffness	0.540 Deg/lb-in	Moment of Inertia	0.0011 lb-in ²
Maximum Speed	6,000 RPM	Full Bearing Support Required?	Yes
Zero-Backlash?	Yes	Torque Wrench	TW:BT-1R-1/4-8.0
Recommended Hex Key	Metric Hex Keys	Material Specification	7075-T651 Extruded and Drawn Aluminum Bar
Temperature	-40°F to 225°F (-40°C to 107°C)	Finish Specification	Bright, No Plating
Manufacturer	Ruland Manufacturing	Country of Origin	USA
Weight (lbs)	0.020200	UPC	634529033814
Tariff Code	8483.60.8000	UNSPC	31163003
Note 1	Torque ratings are at maximum misalignment.		
Note 2	Performance ratings are for guidance only. The user must determine suitability for a particular application.		
Note 3	Torque ratings for the couplings are based on the physical limitations/failure point of the machined beams. Under normal/typical conditions the hubs are capable of holding up to the rated torque of the machined beams. In some cases, especially when the smallest standard bores are used or where shafts are undersized, slippage on the shaft is possible below the rated torque of the machined beams. Please consult technical support for more assistance.		
Prop 65	 WARNING This product can expose you to the chemical Ethylene Thiourea, known to the State of California to cause cancer and birth defects or other reproductive harm. For more information go to www.P65Warnings.ca.gov .		

Installation Instructions

1. Align the bores of the PSR10-2.5-2.5-A four beam coupling on the shafts that are to be joined and determine if the misalignment parameters are within the limits of the coupling. (*Angular*

Misalignment: 3°, Parallel Misalignment: 0.008 in, Axial Motion: 0.005 in)

2. Fully tighten the M3 screws on one hub to the recommended seating torque of 0.92 Nm using a 1.5 mm hex torque wrench.
 3. Before tightening the screws on the second hub, rotate the coupling by hand to allow it to reach its free length.
 4. Tighten the screws on the second hub to the recommended seating torque. Make sure the coupling remains axially relaxed and the misalignment angle remains centered along the length of the coupling.
 5. The shafts may extend into the relieved portion of the bore as long as it does not exceed the shaft penetration length of 0.377 in.
-